



BOARDING PASS



THE OFFICIAL NEWSLETTER OF LEHIGH VALLEY INTERNATIONAL AIRPORT (ABE)



WWW.FLYABE.COM

AIRPORT BOOKING CODE: ABE

610-266-6000

ISSUE No.2 - 2020

DESTINATION D.C.!

In case they needed a reminder of their next destination, passengers got a tasty travel treat while boarding: a Capitol Cookie!

On Friday, December 18th, Lehigh Valley International Airport (ABE) celebrated the kickoff of nonstop service to Washington Dulles International Airport (IAD) aboard United Airlines.

"This new service will give United fliers convenient access between the Lehigh Valley area and the nation's capital, along with greater connectivity to more destinations," said Eddie Gordon, Managing Director of United at Washington Dulles International Airport.

"Dulles remains a gateway for travelers, and we look forward to both welcoming our customers to, and connecting them through, IAD as we expand and rebuild our network from the Washington D.C. region," Gordon added.

This announcement increases flight options provided by United at ABE which currently includes Chicago/O'Hare (ORD) and Newark (EWR - via the United shuttle).

"Dulles was a successful route at ABE before its service suspension in 2012. As the aviation industry navigates through uncertainty, this is positive news to air travelers in the Lehigh Valley region," said Thomas R. Stoudt, Executive Director, Lehigh-Northampton Airport Authority (LNAA).

After seeing 911,970 passengers last year – the highest total since 2004 - the COVID-19 pandemic interrupted the continued surge of air travelers using ABE in 2020.

"Beyond the leisure or business travel, the opportunity for more connectivity via United Airlines continues to showcase your neighborhood airport's role as a growing transportation asset," said Stoudt.



Nonstop to:

- Chicago (MDW) – seasonal
- Fort Lauderdale (FLL)
- Myrtle Beach (MYR) – seasonal
- Nashville (BNA)
- Orlando Sanford (SFB)
- Punta Gorda (PGD)
- Sarasota (SRQ)
- Savannah (SAV)
- St. Petersburg (PIE)



Nonstop to:

- Charlotte (CLT)
- Chicago (ORD)



Nonstop to:

- Atlanta (ATL)
- Detroit (DTW)



Nonstop to:

- Chicago (ORD)
- Newark (EWR)
- Washington, D.C. (IAD)



FLYER FEEDBACK - "THIS IS THE BEST AIRPORT EXPERIENCE I'VE HAD IN YEARS! A QUIET, CALM, FRIENDLY, EASY ACCESS AIRPORT. INTERNATIONAL TOO! CLOSE PARKING. CAR RENTAL COUNTER RIGHT AT BAGGAGE. SURE BEATS FLYING INTO PHILLY. LOVE IT." – KATHY M.



15 YEARS! THANK YOU, ALLEGIANT.



Allegiant started air service from Lehigh Valley International Airport (ABE) with their inaugural flight to Orlando Sanford, Florida (SFB) on December 16, 2005.

Over 15 years, this relationship has grown and strengthened with additional air service and significant investment in our community.

Beyond SFB, Allegiant is flying passengers from ABE to Chicago/Midway (MDW), St. Petersburg (PIE), Fort Lauderdale (FLL), Myrtle Beach (MYR), Nashville (BNA), Punta Gorda (PGD), Sarasota (SRQ), and Savannah (SAV).

Earlier this year, Allegiant opened a two-aircraft base at your neighborhood airport which created more than 60 high paying jobs for the region.

“Since day one, Allegiant has demonstrated a strong commitment to the region by providing air travelers affordable options and has supported impactful initiatives in the Lehigh Valley. Now, they’ve created employment

opportunities in our community, which makes ABE a more critical economic asset,” said Thomas R. Stoudt, Executive Director, LNAA.

Allegiant has supplied staff and an aircraft for the Wings for All® event at ABE - a trademarked program of The Arc of the United States, which is conducted locally - providing a unique rehearsal event for individuals with autism and other intellectual and developmental disabilities to have a real-life experience using an airport.

Wings for All® events at ABE has helped nearly 300 individuals since its inception at your neighborhood airport in 2015.

CLOSED FOR A SHORT-TERM!

As the pandemic reduced air travel, the Lehigh-Northampton Airport Authority (LNAA) seized an opportunity to kick-off a \$1.7 million rehabilitation of the Short-Term and Aero Club parking lots at Lehigh Valley International Airport (ABE).

“When passenger traffic is operating normally, interrupting the customer experience and shutting down parking lots presents a logistical nightmare. This unique situation created the perfect environment for construction, and the winning bid came in 22 percent lower than the engineer’s estimate,” said Ryan Meyer, Director of Planning and Programming, LNAA.

A significant investment for the LNAA to absorb during a challenging economic environment was alleviated by a \$700,000 grant from the PennDOT Bureau of Aviation.

Phase 1 of the two-phase project will be complete by January 2021, which expands the Short-Term parking lot from 115 spaces to 215 spaces for passenger parking, enhanced pavement conditions, new lighting, and improved drainage.

“Improving the customer experience remains a top priority, and the timing for completing this rehabilitation ensures your neighborhood airport is ready for an increase in passenger traffic next year,” said Thomas R. Stoudt, Executive Director, LNAA.

Phase 2 is expected to begin in Spring 2021, including the renovation of the parking booth and new parking access / revenue control equipment. Additionally, 10 electric vehicle charging stations will be installed as the LNAA remains committed to sustainable solutions and upgraded amenities for our passengers.

“The new parking equipment will provide a touchless interface and the future capability for pre-bookings, Apple and Google Pay, and other enhancements which ensures your neighborhood airport continues to deliver the highest level of customer service,” said Meyer.



TRUST AND CONFIDENCE IN ABE!

Keeping you safe when traveling through Lehigh Valley International Airport (ABE) has always been our top priority and that won't change.

Here is a simple COVID-19 travel checklist for passengers to remember:

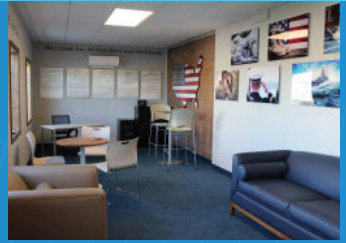
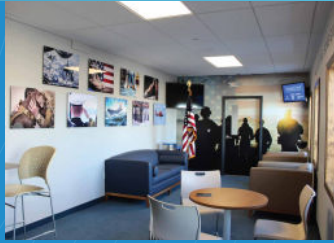
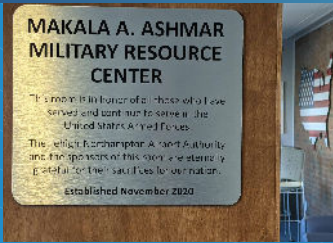
1. Masks or face coverings are required in the Terminal Complex and by all airlines at ABE.
2. Adhere to 6-foot social distancing signs and markings.
3. TSA now allows one liquid hand sanitizer container up to 12 ounces per passenger in a carry-on bag.
4. Wash and/or sanitize your hands frequently throughout your travel.

	2020	2019
September	25,545	66,854
October	35,995	77,794
November	30,367	71,098

“Although holiday travel is projected to be down from normal levels this year, airlines at ABE are adding capacity. Delta has returned their service to Atlanta and United is offering new service to Washington Dulles International Airport which increases travel options for passengers. Allegiant and American are operating mostly normal schedules which has your neighborhood airport positioned for success,” said Thomas R. Stoudt, Executive Director, Lehigh-Northampton Airport Authority (LNAA).



MAKALA A. ASHMAR MILITARY RESOURCE CENTER



Completion of this mission ensures her legacy lasts forever.

In November, Lehigh Valley International Airport (ABE) unveiled the **"Makala A. Ashmar" Military Resource Center** - which honors the brave men and women who have served or are currently serving in the nation's armed forces.

"On many occasions, the Airport has talked about the importance of adding new amenities that create a comfortable & convenient travel environment for all passengers. Today, we successfully met that objective again in honor of someone that impacted so many lives throughout our community," said Thomas R. Stoudt, Executive Director, Lehigh-Northampton Airport Authority (LNAA).

Makala inspired her family, friends, and colleagues during a courageous battle with intrahepatic cholangiocarcinoma – an aggressive and rare cancer of the bile duct. She passed away on September 5th.

"My daughter affectionately expressed all the time how much she treasured spending time with her veterans," said Sharon Ashmar, Makala's mother.

Accompanied by Josh (brother) and James Miller (grandfather, veteran, and retired ABE employee), the entire Ashmar family unveiled the honorary plaque and resource center.

Located just beyond the TSA Checkpoint (next to the Sensory Room in the Departure Building), military personnel and veterans can slow down with a seat on the couch, decompress by watching TV, or grab a quick snack to go. Before taking off or returning from a deployment, traveling home for the holidays, or taking a well-deserved vacation – ABE hopes military personnel feel right at home in your neighborhood airport.

This amazing project would not have been possible without the commitment of the title sponsor – Service Electric Cable TV & Communications.

"From the minute Makala Ashmar approached Service Electric about supporting our military men and women traveling through Lehigh Valley International Airport, we wanted to take part. Service Electric is proud to be a sponsor of the Military Resource Center. We know how important this is to ABE and are honored to participate," said John Walson, President of Service Electric Cable TV & Communications.

We are thankful for the following integral sponsors that made this project a reality including: Interior Workplace Solutions, FastSigns of Easton, Mike Geiger, Lisa Scheller, NAM Nights, The Mayberry-Avizoff Family, Westgate Global Logistics, Lehigh Valley Health Network, Bethlehem Volunteer Fireman's Home Association, Online Power Service, Inc., Blue Star Mothers, Gold Star Mothers and the LNAA Police Department.

To watch the entire dedication ceremony, [click here.](#)

TAKE FLIGHT AGAINST CANCER

Already on board for a cure, Lehigh Valley International Airport (ABE) has spread its wings through a partnership with the Cancer Support Community of the Greater Lehigh Valley (CSCGLV).

Since the arrival of "Take Flight Against Cancer", 117 names have been installed on the horizontal stabilizers from the tail section of a Gulfstream (GIV) 1000 located in the TSA Tunnel of the Terminal Complex at ABE.

"It's time to give cancer a non-stop flight to extinction, as so many of us at the Airport and in the region have been affected by this disease," said Thomas R. Stoudt, Executive Director, Lehigh-Northampton Airport Authority (LNAA).

With a \$25 donation, you can honor or remember anyone impacted by cancer. <https://www.cancersupportglv.org/take-flight-against/>

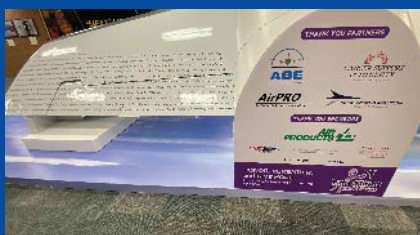
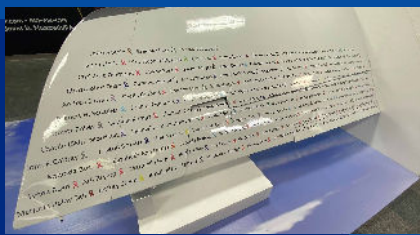
In September 2019, CSCGLV received the donation of a Gulfstream (GIV) 1000 aircraft tail section from New World Aviation and immediately secured the engineering talents of the Air Products Retiree Group (AirPRO) led by Rick Sell and Morris Halpin. Following two months of non-stop restoration, the structure –

which is mounted on an 8-foot by 32-foot platform - arrived at ABE by the end of June.

"We are so grateful for the opportunity to partner with ABE on this initiative to bring awareness to the comprehensive psychosocial programs that are offered to cancer patients and their families here in the Lehigh Valley. By partnering with the Airport, and the opportunity to raise funds, we will be able to continue to offer these programs at no cost to anyone affected by cancer," said Amanda K. Buss, Executive Director, CSCGLV.

100% of the proceeds will go towards the following programs offered by the CSCGLV: Support Groups, Education Seminars, Healthy Lifestyle Classes, Children/Family Programs, Social Activities, Cancer Resources, and a Free Wig Salon. To make a donation, visit www.cancersupportglv.org.

ABE and CSCGLV would like to extend our sincere appreciation to the following sponsors: Air Products, FastSigns of Easton, Working Dog Press, Traditions of Hanover, and Julie Knight, CFP, CLTC, CDFA of Janney Montgomery Scott, LLC.





WHO'S YOUR HERO?



Inspired by the resilience and courage of Airport staff and front-line workers in our communities throughout 2020, Abe the Pilot developed a special flight plan this holiday season!

Who's Your Hero offered an opportunity for individuals to tell us about their current hero, how they have impacted their lives, and why bringing their hero home for the holidays is important.

Thanks to the support from radio partner, WLEV 100.7, your neighborhood airport provided up to \$1,000 in airline tickets to one (1) lucky winner.

Congratulations Stacy Izarek for your heartwarming story about your hero!

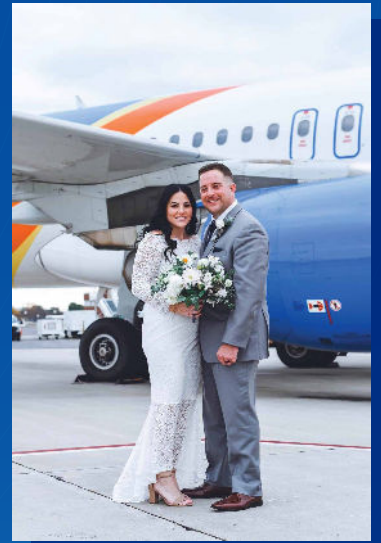
WEDDING BELLS!

It's not your typical wedding venue, but ABE served as the perfect runway for Jordan and Heather Sherman to takeoff on their journey of a lifetime.

On October 31st, the couple exchanged vows in the Main Terminal surrounded by a limited number of socially distanced family and friends.

Why choose ABE for this special occasion? Jordan and Heather met in June 2018 at your neighborhood airport while awaiting a flight aboard Allegiant to St. Petersburg.

Congratulations to the new Mr. and Mrs. Sherman!



EMPLOYEE SPOTLIGHT



Greg Kutyla
– LNAA Maintenance

Born and raised in Poland in the middle of the Cold War, Greg Kutyla grew up in a family of five (5). His story is one of triumph and determination for overcoming the overwhelming economic and social challenges (grocery shortages, etc.) of a communist state. A transcendent new chapter of his life occurred after graduating from a technical university and obtaining a United States (U.S.) immigration visa. Greg's transition to living in the U.S. began by attending language schools and searching for better job opportunities. In 1995, he demonstrated a belief in his personal talents by opening his first small business specializing in high-end interior

finishes and murals. Over a decade later, his business profile evolved further with emphasis on simple renovations, specialty painting, color consulting, and interior design. Hesitating about shifting gears, Greg entertained thoughts about a job opening at the Airport Authority, before hopping on board in 2017. He remains dedicated to improving the appearance and function of LNAA facilities. The substantial growth at ABE is exciting and makes Greg's days fly by but he always manages to produce smiles from colleagues and airport staff, which is his best reward. Greg is a valued member of the ABE family!

CANINE CORNER



Sherman Reibman –
C.O.P.E. (Canines Offering
Passengers Encouragement)
Therapy Dog

Hi! My name is Sherman. Five years ago, I joined the C.O.P.E. program at ABE with the support of my family, Glenn and Sue Ann Reibman. I was only 3 years old at that time, so I guess that makes me 8 years old now or 56 in human years. Did you ever wonder why we doggies are "hanging around" at the Airport? We like to have travelers pet us; it seems to calm them as they wait for their flights. My airport experience is just like everyone else's. I go through security, walk through this big metal machine that sometimes beeps. My mom carries me up the moving stairs, so my feet don't get stuck. After that, my first stop is usually the Children's Play Area. Once I arrive in the Departure Concourse, passengers are surprised and excited. They talk to me and sometimes I sit in their laps. My bigger canine friends in the program enjoy just sitting and being petted. People say, "we made their day". I do this at church as well and also at local nursing homes and colleges. Due to COVID-19, I've been unable to come to the Airport lately, but can't wait to get back there ASAP.



ABE'S TRAVEL TIP: Beginning October 1, 2021, Pennsylvanians will need a REAL ID-compliant driver's license, photo ID card, or another form of federally-acceptable identification (such as a valid passport or military ID) to board a domestic commercial flight or enter a federal building or military installation.

ABE has two (2) REAL ID Information Stations – Main Terminal (2nd Level) and in the Wilfred M. "Wiley" Post, Jr. Departure Concourse.

For more information regarding REAL ID, go to: <https://www.dmv.pa.gov/REALID/pages/default.aspx>