

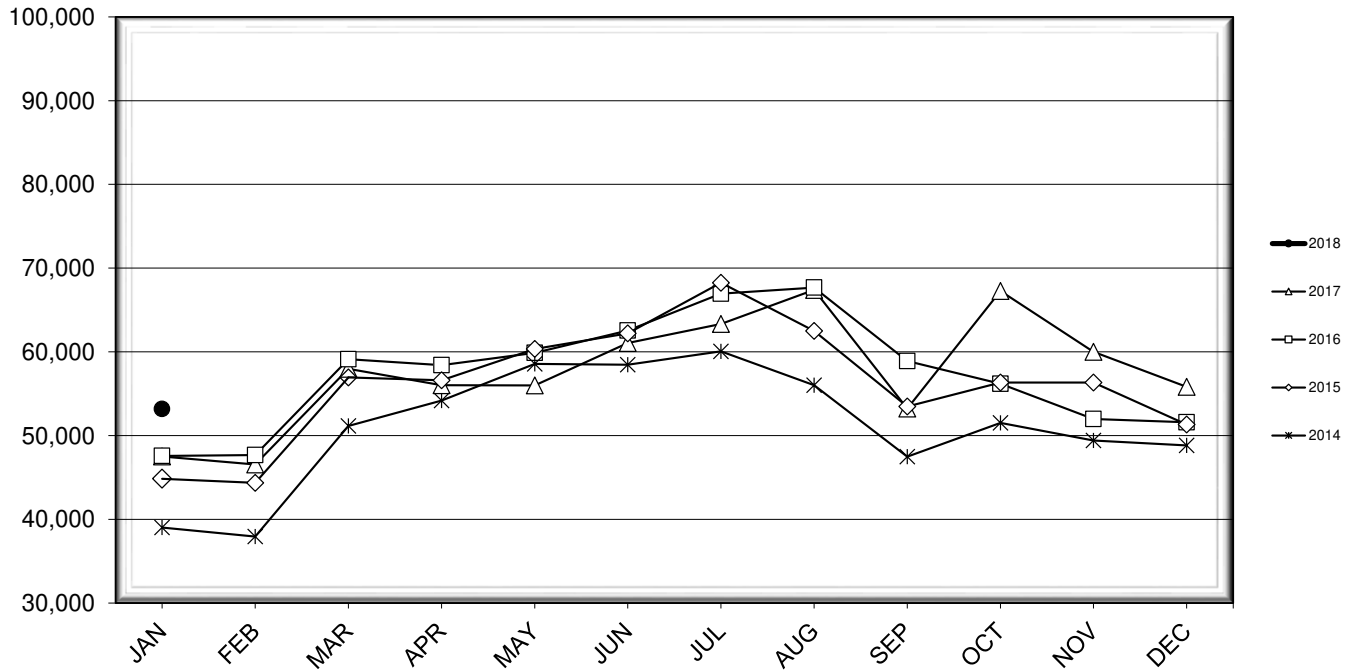


LEHIGH VALLEY INTERNATIONAL AIRPORT MONTHLY TRAFFIC REPORT JANUARY 2018

TOTAL PASSENGER TRAFFIC COMPARISON

Month	2018	Percent Difference	2017	2016	2015	2014
January	53,177	11.92%	47,515	47,570	44,848	39,020
February			46,549	47,675	44,358	37,943
March			57,977	59,121	56,939	51,161
April			56,012	58,420	56,606	54,173
May			55,996	59,880	60,335	58,567
June			61,044	62,542	62,200	58,471
July			63,336	66,953	68,256	60,064
August			67,402	67,673	62,497	56,021
September			53,228	58,906	53,474	47,471
October			67,261	56,198	56,335	51,509
November			60,008	51,971	56,326	49,414
December			55,826	51,596	51,331	48,836

COMPARISON OF TOTAL PASSENGERS



**LEHIGH VALLEY INTERNATIONAL AIRPORT (ABE)
MONTHLY TRAFFIC REPORT
JANUARY 2018**

JANUARY

YEAR-TO-DATE

		2018	2017	Increase (Decrease)	Percent Difference	2018	2017	Increase (Decrease)	Percent Difference
MAJOR AIRLINES:									
Passengers									
Enplaned		2,522	2,073	449	21.66%	2,522	2,073	449	21.66%
Deplaned		2,102	1,753	349	19.91%	2,102	1,753	349	19.91%
Sub-total		4,624	3,826	798	20.86%	4,624	3,826	798	20.86%
REGIONAL AIRLINES:									
Passengers									
Enplaned		24,461	22,170	2,291	10.33%	24,461	22,170	2,291	10.33%
Deplaned		24,092	21,519	2,573	11.96%	24,092	21,519	2,573	11.96%
Sub-total		48,553	43,689	4,864	11.13%	48,553	43,689	4,864	11.13%
TOTAL PASSENGERS		53,177	47,515	5,662	11.92%	53,177	47,515	5,662	11.92%
CARGO:									
Enplaned		8,257,948	9,386,049	(1,128,101)	-12.02%	8,257,948	9,386,049	(1,128,101)	-12.02%
Deplaned		8,464,529	9,439,882	(975,353)	-10.33%	8,464,529	9,439,882	(975,353)	-10.33%
TOTAL CARGO		16,722,477	18,825,931	(2,103,454)	-11.17%	16,722,477	18,825,931	(2,103,454)	-11.17%
CUSTOMS: Entries									
		18	10	8	80.00%	18	10	8	80.00%

MONTHLY AIRCRAFT ACTIVITY

The FEDERAL AVIATION ADMINISTRATION
AIR TRAFFIC CONTROL TOWER at LVIA recorded
the following aircraft take-offs and landings for the month:

JANUARY

YEAR-TO-DATE

		2018	2017	Increase (Decrease)	Percent Difference	2018	2017	Increase (Decrease)	Percent Difference
Major Airlines		808	765	43	5.62%	808	765	43	5.62%
Regional Airlines		710	727	(17)	-2.34%	710	727	(17)	-2.34%
General Aviation		1,632	1,544	88	5.70%	1,632	1,544	88	5.70%
Military		75	29	46	158.62%	75	29	46	158.62%
Total Itinerant		3,225	3,065	160	5.22%	3,225	3,065	160	5.22%
Total Local		2,060	1,998	62	3.10%	2,060	1,998	62	3.10%
TOTAL OPERATIONS		5,285	5,063	222	4.38%	5,285	5,063	222	4.38%

