

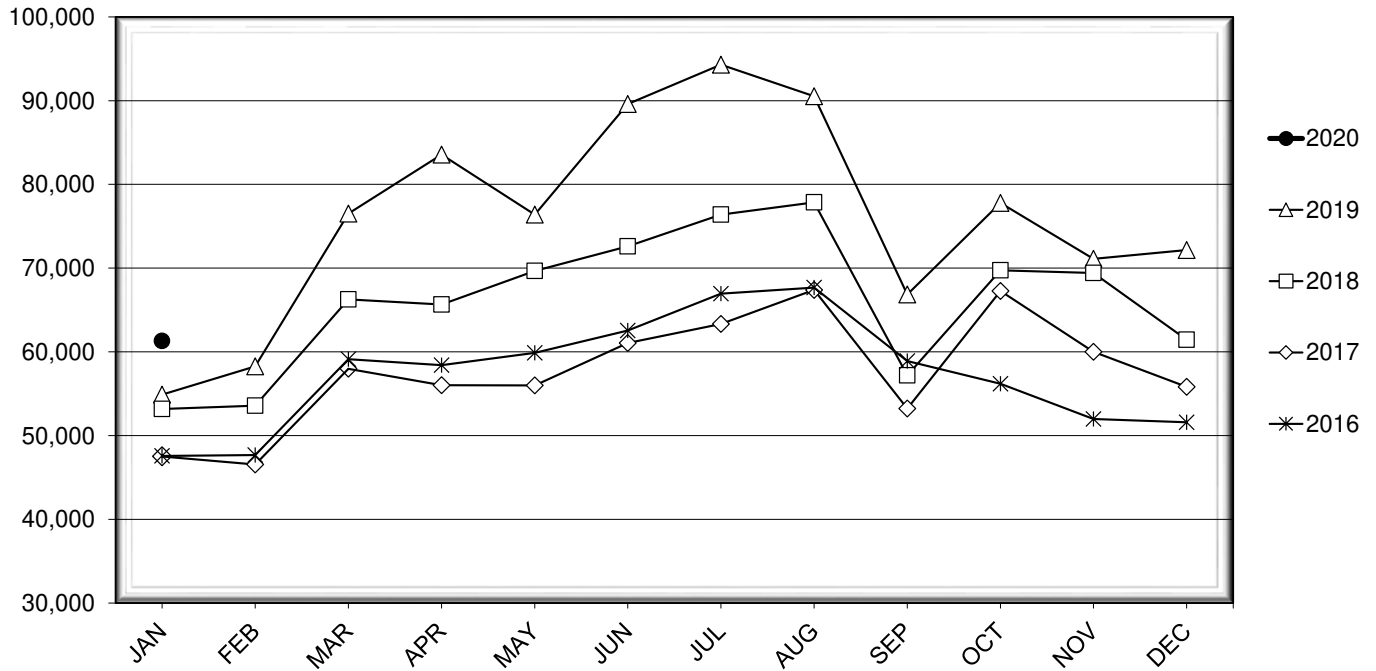


LEHIGH VALLEY INTERNATIONAL AIRPORT MONTHLY TRAFFIC REPORT JANUARY 2020

TOTAL PASSENGER TRAFFIC COMPARISON

Month	2020	Percent Difference	2019	2018	2017	2016
January	61,309	11.68%	54,895	53,177	47,515	47,570
February			58,276	53,564	46,549	47,675
March			76,512	66,267	57,977	59,121
April			83,560	65,648	56,012	58,420
May			76,400	69,675	55,996	59,880
June			89,609	72,600	61,044	62,542
July			94,298	76,394	63,336	66,953
August			90,524	77,851	67,402	67,673
September			66,854	57,195	53,228	58,906
October			77,794	69,736	67,261	56,198
November			71,098	69,414	60,008	51,971
December			72,150	61,453	55,826	51,596

COMPARISON OF TOTAL PASSENGERS



**LEHIGH VALLEY INTERNATIONAL AIRPORT (ABE)
MONTHLY TRAFFIC REPORT
JANUARY 2020**

JANUARY

YEAR-TO-DATE

		2020	2019	Increase (Decrease)	Percent Difference	2020	2019	Increase (Decrease)	Percent Difference
MAJOR AIRLINES:									
Passengers									
Enplaned		2,114	2,468	(354)	-14.34%	2,114	2,468	(354)	-14.34%
Deplaned		1,915	2,332	(417)	-17.88%	1,915	2,332	(417)	-17.88%
Sub-total		4,029	4,800	(771)	-16.06%	4,029	4,800	(771)	-16.06%
REGIONAL AIRLINES:									
Passengers									
Enplaned		29,568	26,039	3,529	13.55%	29,568	26,039	3,529	13.55%
Deplaned		27,712	24,056	3,656	15.20%	27,712	24,056	3,656	15.20%
Sub-total		57,280	50,095	7,185	14.34%	57,280	50,095	7,185	14.34%
TOTAL PASSENGERS		61,309	54,895	6,414	11.68%	61,309	54,895	6,414	11.68%
CARGO:									
Enplaned		8,058,997	8,220,989	(161,992)	-1.97%	8,058,997	8,220,989	(161,992)	-1.97%
Deplaned		8,139,239	6,978,604	1,160,635	16.63%	8,139,239	6,978,604	1,160,635	16.63%
TOTAL CARGO		16,198,236	15,199,593	998,643	6.57%	16,198,236	15,199,593	998,643	6.57%
CUSTOMS: Entries									
		8	12	(4)	-33.33%	8	12	(4)	-33.33%

MONTHLY AIRCRAFT ACTIVITY

The FEDERAL AVIATION ADMINISTRATION
AIR TRAFFIC CONTROL TOWER at LVIA recorded
the following aircraft take-offs and landings for the month:

JANUARY

YEAR-TO-DATE

		2020	2019	Increase (Decrease)	Percent Difference	2020	2019	Increase (Decrease)	Percent Difference
Major Airlines		1,057	773	284	36.74%	1,057	773	284	36.74%
Regional Airlines		622	659	(37)	-5.61%	622	659	(37)	-5.61%
General Aviation		2,034	1,797	237	13.19%	2,034	1,797	237	13.19%
Military		57	36	21	58.33%	57	36	21	58.33%
Total Itinerant		3,770	3,265	505	15.47%	3,770	3,265	505	15.47%
Total Local		2,603	1,452	1,151	79.27%	2,603	1,452	1,151	79.27%
TOTAL OPERATIONS		6,373	4,717	1,656	35.11%	6,373	4,717	1,656	35.11%

**LEHIGH VALLEY INTERNATIONAL AIRPORT (ABE)
MONTHLY TRAFFIC REPORT
AIRLINE PASSENGER STATISTICS**

AIRLINE / OPERATOR	JANUARY ENPLANEMENT DATA				JANUARY DEPLANEMENT DATA			
	2020	2019	Difference	% Change	2020	2019	Difference	% Change
Allegiant Air	12,076	8,984	3,092	34.42%	10,815	8,473	2,342	27.64%
Envoy	715	-	715	N/A	915	-	915	N/A
Piedmont	2,795	2,592	203	7.83%	2,174	2,244	(70)	-3.12%
PSA	4,932	5,451	(519)	-9.52%	5,043	4,921	122	2.48%
American Airlines Total	8,442	8,043	399	4.96%	8,132	7,165	967	13.50%
Endeavor	2,983	2,625	358	13.64%	2,975	2,619	356	13.59%
Skywest	2,663	3,065	(402)	-13.12%	2,575	2,773	(198)	-7.14%
Delta Connection Subtotal	5,646	5,690	(44)	-0.77%	5,550	5,392	158	2.93%
Delta Air Lines Mainline	2,114	2,468	(354)	-14.34%	1,915	2,332	(417)	-17.88%
Delta Air Lines Total	7,760	8,158	(398)	-4.88%	7,465	7,724	(259)	-3.35%
Air Wisconsin	-	659	(659)	-100.00%	-	547	(547)	-100.00%
Express Jet	-	1,292	(1,292)	-100.00%	37	1,464	(1,427)	-97.47%
GoJet	2,299	-	2,299	N/A	2,188	-	2,188	N/A
Skywest	-	125	(125)	-100.00%	-	105	(105)	-100.00%
United Shuttle	1,105	1,246	(141)	-11.32%	990	910	80	8.79%
United Airlines Total	3,404	3,322	82	2.47%	3,215	3,026	189	6.25%
Charters	-	-	0	N/A	-	-	0	N/A

MONTHLY TOTALS	JANUARY ENPLANEMENT DATA				JANUARY DEPLANEMENT DATA			
	2020	2019	Difference	% Change	2020	2019	Difference	% Change
	31,682	28,507	3,175	11.14%	29,627	26,388	3,239	12.27%

TOTAL PASSENGERS FOR JANUARY 2020: 61,309
PERCENT CHANGE VERSUS JANUARY 2019: +11.68%