

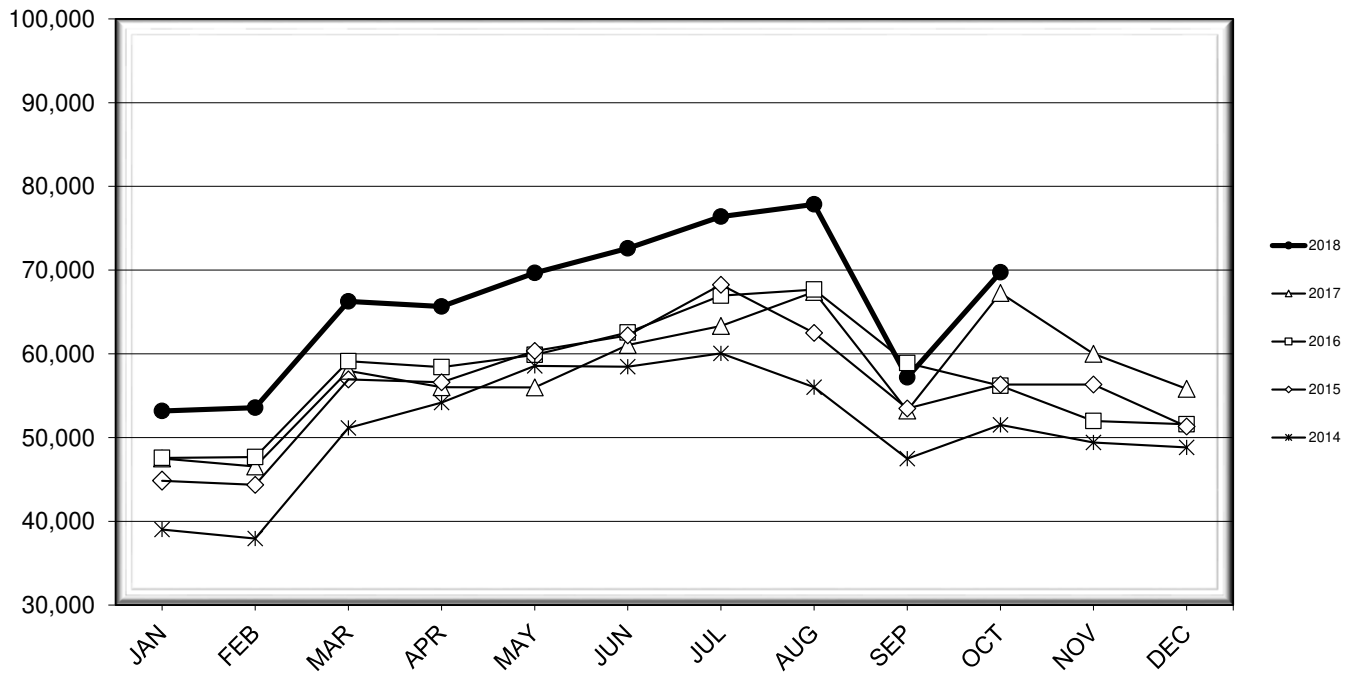


LEHIGH VALLEY INTERNATIONAL AIRPORT MONTHLY TRAFFIC REPORT OCTOBER 2018

TOTAL PASSENGER TRAFFIC COMPARISON

Month	2018	Percent Difference	2017	2016	2015	2014
January	53,177	11.92%	47,515	47,570	44,848	39,020
February	53,564	15.07%	46,549	47,675	44,358	37,943
March	66,267	14.30%	57,977	59,121	56,939	51,161
April	65,648	17.20%	56,012	58,420	56,606	54,173
May	69,675	24.43%	55,996	59,880	60,335	58,567
June	72,600	18.93%	61,044	62,542	62,200	58,471
July	76,394	20.62%	63,336	66,953	68,256	60,064
August	77,851	15.50%	67,402	67,673	62,497	56,021
September	57,195	7.45%	53,228	58,906	53,474	47,471
October	69,736	3.68%	67,261	56,198	56,335	51,509
November			60,008	51,971	56,326	49,414
December			55,826	51,596	51,331	48,836

COMPARISON OF TOTAL PASSENGERS



**LEHIGH VALLEY INTERNATIONAL AIRPORT (ABE)
MONTHLY TRAFFIC REPORT
OCTOBER 2018**

OCTOBER

YEAR-TO-DATE

		2018	2017	Increase (Decrease)	Percent Difference	2018	2017	Increase (Decrease)	Percent Difference
MAJOR AIRLINES:									
Passengers									
Enplaned		2,898	2,793	105	3.76%	29,005	24,928	4,077	16.36%
Deplaned		2,795	2,501	294	11.76%	27,447	22,469	4,978	22.15%
Sub-total		5,693	5,294	399	7.54%	56,452	47,397	9,055	19.10%
REGIONAL AIRLINES:									
Passengers									
Enplaned		32,231	31,062	1,169	3.76%	304,405	264,875	39,530	14.92%
Deplaned		31,812	30,905	907	2.93%	301,250	264,048	37,202	14.09%
Sub-total		64,043	61,967	2,076	3.35%	605,655	528,923	76,732	14.51%
TOTAL PASSENGERS		69,736	67,261	2,475	3.68%	662,107	576,320	85,787	14.89%
CARGO:									
Enplaned		9,392,980	7,748,309	1,644,671	21.23%	87,570,433	81,130,504	6,439,929	7.94%
Deplaned		8,752,769	10,106,397	(1,353,628)	-13.39%	83,997,316	86,081,951	(2,084,635)	-2.42%
TOTAL CARGO		18,145,749	17,854,706	291,043	1.63%	171,567,749	167,212,455	4,355,294	2.60%
CUSTOMS: Entries									
		21	22	(1)	-4.55%	158	155	3	1.94%

MONTHLY AIRCRAFT ACTIVITY

The FEDERAL AVIATION ADMINISTRATION
AIR TRAFFIC CONTROL TOWER at LVIA recorded
the following aircraft take-offs and landings for the month:

OCTOBER

YEAR-TO-DATE

		2018	2017	Increase (Decrease)	Percent Difference	2018	2017	Increase (Decrease)	Percent Difference
Major Airlines		944	907	37	4.08%	8,793	8,404	389	4.63%
Regional Airlines		810	851	(41)	-4.82%	7,333	7,926	(593)	-7.48%
General Aviation		2,569	2,562	7	0.27%	21,476	21,684	(208)	-0.96%
Military		39	50	(11)	-22.00%	485	469	16	3.41%
Total Itinerant		4,362	4,370	(8)	-0.18%	38,087	38,483	(396)	-1.03%
Total Local		2,462	2,798	(336)	-12.01%	24,379	28,973	(4,594)	-15.86%
TOTAL OPERATIONS		6,824	7,168	(344)	-4.80%	62,466	67,456	(4,990)	-7.40%

