

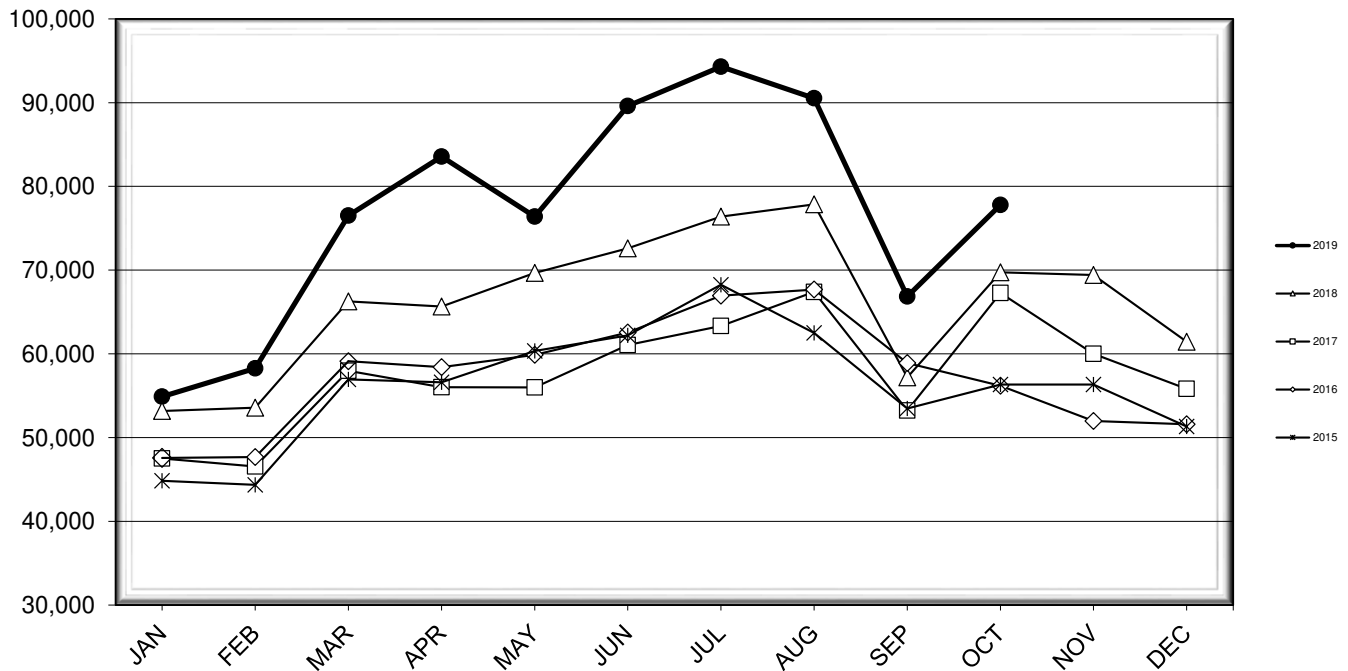


LEHIGH VALLEY INTERNATIONAL AIRPORT MONTHLY TRAFFIC REPORT OCTOBER 2019

TOTAL PASSENGER TRAFFIC COMPARISON

| Month | 2019 | Percent Difference | 2018 | 2017 | 2016 | 2015 |
|-----------|--------|--------------------|--------|--------|--------|--------|
| January | 54,895 | 3.23% | 53,177 | 47,515 | 47,570 | 44,848 |
| February | 58,276 | 8.80% | 53,564 | 46,549 | 47,675 | 44,358 |
| March | 76,512 | 15.46% | 66,267 | 57,977 | 59,121 | 56,939 |
| April | 83,560 | 27.28% | 65,648 | 56,012 | 58,420 | 56,606 |
| May | 76,400 | 9.65% | 69,675 | 55,996 | 59,880 | 60,335 |
| June | 89,609 | 23.43% | 72,600 | 61,044 | 62,542 | 62,200 |
| July | 94,298 | 23.44% | 76,394 | 63,336 | 66,953 | 68,256 |
| August | 90,524 | 16.28% | 77,851 | 67,402 | 67,673 | 62,497 |
| September | 66,854 | 16.89% | 57,195 | 53,228 | 58,906 | 53,474 |
| October | 77,794 | 11.56% | 69,736 | 67,261 | 56,198 | 56,335 |
| November | | | 69,414 | 60,008 | 51,971 | 56,326 |
| December | | | 61,453 | 55,826 | 51,596 | 51,331 |

COMPARISON OF TOTAL PASSENGERS



**LEHIGH VALLEY INTERNATIONAL AIRPORT (ABE)
MONTHLY TRAFFIC REPORT
OCTOBER 2019**

OCTOBER

YEAR-TO-DATE

| | | 2019 | 2018 | Increase (Decrease) | Percent Difference | 2019 | 2018 | Increase (Decrease) | Percent Difference |
|---------------------------|--|-------------------|-------------------|--------------------------------|-------------------------------|--------------------|--------------------|--------------------------------|-------------------------------|
| MAJOR AIRLINES: | | | | | | | | | |
| Passengers | | | | | | | | | |
| Enplaned | | 2,942 | 2,898 | 44 | 1.52% | 26,218 | 29,005 | (2,787) | -9.61% |
| Deplaned | | 2,739 | 2,795 | (56) | -2.00% | 24,852 | 27,447 | (2,595) | -9.45% |
| Sub-total | | 5,681 | 5,693 | (12) | -0.21% | 51,070 | 56,452 | (5,382) | -9.53% |
| REGIONAL AIRLINES: | | | | | | | | | |
| Passengers | | | | | | | | | |
| Enplaned | | 36,374 | 32,231 | 4,143 | 12.85% | 360,134 | 304,405 | 55,729 | 18.31% |
| Deplaned | | 35,739 | 31,812 | 3,927 | 12.34% | 357,518 | 301,250 | 56,268 | 18.68% |
| Sub-total | | 72,113 | 64,043 | 8,070 | 12.60% | 717,652 | 605,655 | 111,997 | 18.49% |
| TOTAL PASSENGERS | | 77,794 | 69,736 | 8,058 | 11.56% | 768,722 | 662,107 | 106,615 | 16.10% |
| CARGO: | | | | | | | | | |
| Enplaned | | 7,147,724 | 9,392,980 | (2,245,256) | -23.90% | 78,287,908 | 87,570,433 | (9,282,525) | -10.60% |
| Deplaned | | 7,048,416 | 8,752,769 | (1,704,353) | -19.47% | 67,409,121 | 83,997,316 | (16,588,195) | -19.75% |
| TOTAL CARGO | | 14,196,140 | 18,145,749 | (3,949,609) | -21.77% | 145,697,029 | 171,567,749 | (25,870,720) | -15.08% |
| CUSTOMS: Entries | | | | | | | | | |
| | | 17 | 21 | (4) | -19.05% | 145 | 158 | (13) | -8.23% |

MONTHLY AIRCRAFT ACTIVITY

The FEDERAL AVIATION ADMINISTRATION
AIR TRAFFIC CONTROL TOWER at LVIA recorded
the following aircraft take-offs and landings for the month:

OCTOBER

YEAR-TO-DATE

| | | 2019 | 2018 | Increase (Decrease) | Percent Difference | 2019 | 2018 | Increase (Decrease) | Percent Difference |
|-------------------------|--|--------------|--------------|--------------------------------|-------------------------------|---------------|---------------|--------------------------------|-------------------------------|
| Major Airlines | | 1,048 | 944 | 104 | 11.02% | 9,465 | 8,793 | 672 | 7.64% |
| Regional Airlines | | 878 | 810 | 68 | 8.40% | 8,269 | 7,333 | 936 | 12.76% |
| General Aviation | | 2,401 | 2,569 | (168) | -6.54% | 24,080 | 21,476 | 2,604 | 12.13% |
| Military | | 42 | 39 | 3 | 7.69% | 412 | 485 | (73) | -15.05% |
| Total Itinerant | | 4,369 | 4,362 | 7 | 0.16% | 42,226 | 38,087 | 4,139 | 10.87% |
| Total Local | | 3,358 | 2,462 | 896 | 36.39% | 31,731 | 24,379 | 7,352 | 30.16% |
| TOTAL OPERATIONS | | 7,727 | 6,824 | 903 | 13.23% | 73,957 | 62,466 | 11,491 | 18.40% |

