

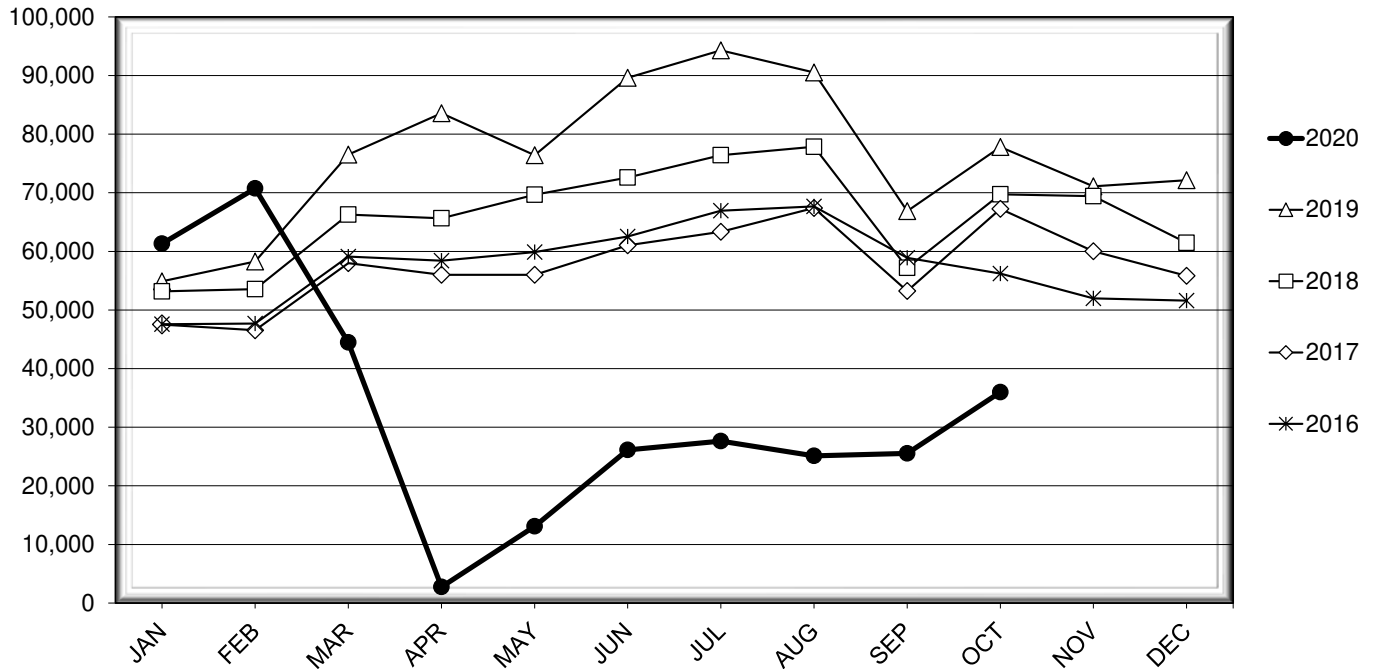


LEHIGH VALLEY INTERNATIONAL AIRPORT MONTHLY TRAFFIC REPORT OCTOBER 2020

TOTAL PASSENGER TRAFFIC COMPARISON

Month	2020	Percent Difference	2019	2018	2017	2016
January	61,309	11.68%	54,895	53,177	47,515	47,570
February	70,732	21.37%	58,276	53,564	46,549	47,675
March **	44,478	-41.87%	76,512	66,267	57,977	59,121
April	2,749	-96.71%	83,560	65,648	56,012	58,420
May	13,107	-82.84%	76,400	69,675	55,996	59,880
June	26,123	-70.85%	89,609	72,600	61,044	62,542
July	27,612	-70.72%	94,298	76,394	63,336	66,953
August	25,116	-72.25%	90,524	77,851	67,402	67,673
September	25,545	-61.79%	66,854	57,195	53,228	58,906
October	35,995	-53.73%	77,794	69,736	67,261	56,198
November			71,098	69,414	60,008	51,971
December			72,150	61,453	55,826	51,596

COMPARISON OF TOTAL PASSENGERS



** COVID-19 PANDEMIC

**LEHIGH VALLEY INTERNATIONAL AIRPORT (ABE)
MONTHLY TRAFFIC REPORT
OCTOBER 2020**

OCTOBER

YEAR-TO-DATE

		2020	2019	Increase (Decrease)	Percent Difference	2020	2019	Increase (Decrease)	Percent Difference
MAJOR AIRLINES:									
Passengers									
Enplaned		0	2,942	(2,942)	-100.00%	5,713	26,218	(20,505)	-78.21%
Deplaned		0	2,739	(2,739)	-100.00%	5,781	24,852	(19,071)	-76.74%
Sub-total		0	5,681	(5,681)	-100.00%	11,494	51,070	(39,576)	-77.49%
REGIONAL AIRLINES:									
Passengers									
Enplaned		18,033	36,374	(18,341)	-50.42%	160,613	360,134	(199,521)	-55.40%
Deplaned		17,962	35,739	(17,777)	-49.74%	160,659	357,518	(196,859)	-55.06%
Sub-total		35,995	72,113	(36,118)	-50.09%	321,272	717,652	(396,380)	-55.23%
TOTAL PASSENGERS		35,995	77,794	(41,799)	-53.73%	332,766	768,722	(435,956)	-56.71%
CARGO:									
Enplaned		8,079,247	7,147,724	931,523	13.03%	82,903,271	78,287,908	4,615,363	5.90%
Deplaned		8,343,174	7,048,416	1,294,758	18.37%	90,164,435	67,409,121	22,755,314	33.76%
TOTAL CARGO		16,422,421	14,196,140	2,226,281	15.68%	173,067,706	145,697,029	27,370,677	18.79%
CUSTOMS: Entries									
		6	17	(11)	-64.71%	47	145	(98)	-67.59%

MONTHLY AIRCRAFT ACTIVITY

The FEDERAL AVIATION ADMINISTRATION
AIR TRAFFIC CONTROL TOWER at LVIA recorded
the following aircraft take-offs and landings for the month:

OCTOBER

YEAR-TO-DATE

		2020	2019	Increase (Decrease)	Percent Difference	2020	2019	Increase (Decrease)	Percent Difference
Major Airlines		730	1,048	(318)	-30.34%	7,279	9,465	(2,186)	-23.10%
Regional Airlines		490	878	(388)	-44.19%	4,645	8,269	(3,624)	-43.83%
General Aviation		2,535	2,401	134	5.58%	22,117	24,080	(1,963)	-8.15%
Military		72	42	30	71.43%	371	412	(41)	-9.95%
Total Itinerant		3,827	4,369	(542)	-12.41%	34,412	42,226	(7,814)	-18.51%
Total Local		1,625	3,358	(1,733)	-51.61%	19,649	31,731	(12,082)	-38.08%
TOTAL OPERATIONS		5,452	7,727	(2,275)	-29.44%	54,061	73,957	(19,896)	-26.90%

