

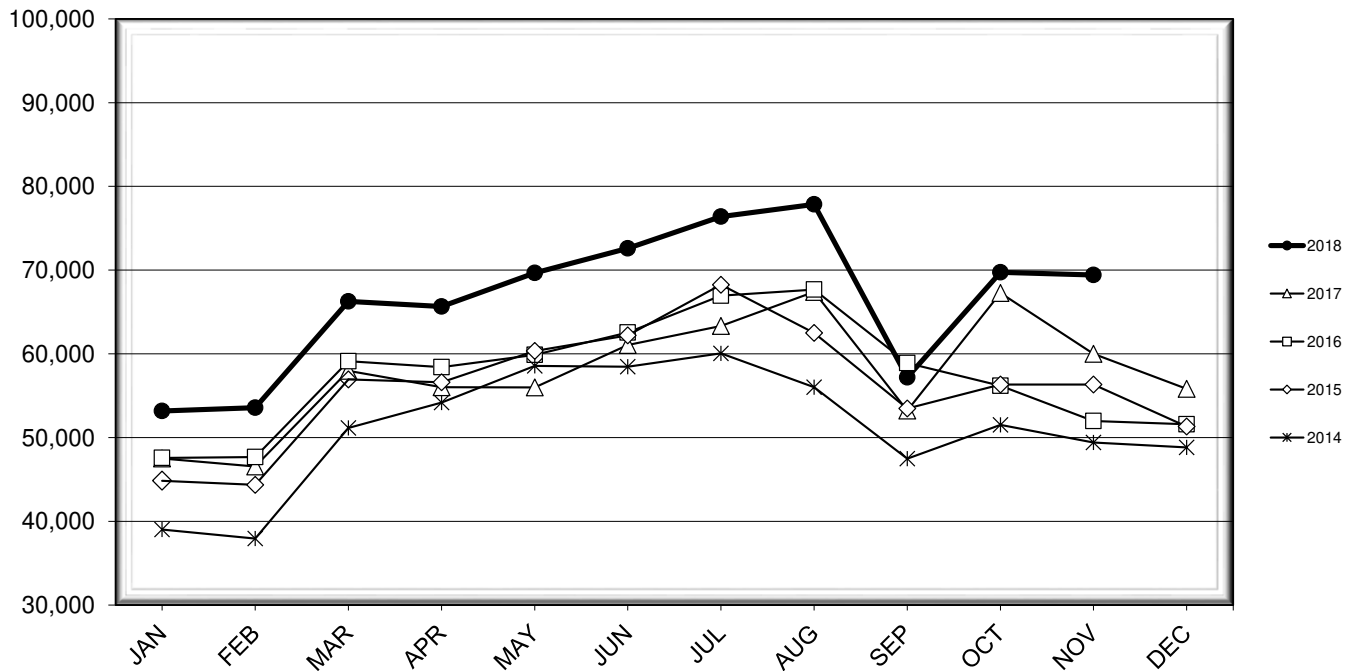


LEHIGH VALLEY INTERNATIONAL AIRPORT MONTHLY TRAFFIC REPORT NOVEMBER 2018

TOTAL PASSENGER TRAFFIC COMPARISON

Month	2018	Percent Difference	2017	2016	2015	2014
January	53,177	11.92%	47,515	47,570	44,848	39,020
February	53,564	15.07%	46,549	47,675	44,358	37,943
March	66,267	14.30%	57,977	59,121	56,939	51,161
April	65,648	17.20%	56,012	58,420	56,606	54,173
May	69,675	24.43%	55,996	59,880	60,335	58,567
June	72,600	18.93%	61,044	62,542	62,200	58,471
July	76,394	20.62%	63,336	66,953	68,256	60,064
August	77,851	15.50%	67,402	67,673	62,497	56,021
September	57,195	7.45%	53,228	58,906	53,474	47,471
October	69,736	3.68%	67,261	56,198	56,335	51,509
November	69,414	15.67%	60,008	51,971	56,326	49,414
December			55,826	51,596	51,331	48,836

COMPARISON OF TOTAL PASSENGERS



**LEHIGH VALLEY INTERNATIONAL AIRPORT (ABE)
MONTHLY TRAFFIC REPORT
NOVEMBER 2018**

NOVEMBER

YEAR-TO-DATE

		2018	2017	Increase (Decrease)	Percent Difference	2018	2017	Increase (Decrease)	Percent Difference
MAJOR AIRLINES:									
Passengers									
Enplaned		2,843	3,508	(665)	-18.96%	31,848	28,436	3,412	12.00%
Deplaned		2,912	3,502	(590)	-16.85%	30,359	25,971	4,388	16.90%
Sub-total		5,755	7,010	(1,255)	-17.90%	62,207	54,407	7,800	14.34%
REGIONAL AIRLINES:									
Passengers									
Enplaned		31,947	26,022	5,925	22.77%	336,352	290,897	45,455	15.63%
Deplaned		31,712	26,976	4,736	17.56%	332,962	291,024	41,938	14.41%
Sub-total		63,659	52,998	10,661	20.12%	669,314	581,921	87,393	15.02%
TOTAL PASSENGERS		69,414	60,008	9,406	15.67%	731,521	636,328	95,193	14.96%
CARGO:									
Enplaned		8,497,295	8,253,085	244,210	2.96%	96,067,728	89,383,589	6,684,139	7.48%
Deplaned		7,781,633	9,599,718	(1,818,085)	-18.94%	91,778,949	95,681,669	(3,902,720)	-4.08%
TOTAL CARGO		16,278,928	17,852,803	(1,573,875)	-8.82%	187,846,677	185,065,258	2,781,419	1.50%
CUSTOMS: Entries									
		14	16	(2)	-12.50%	172	171	1	0.58%

MONTHLY AIRCRAFT ACTIVITY

The FEDERAL AVIATION ADMINISTRATION
AIR TRAFFIC CONTROL TOWER at LVIA recorded
the following aircraft take-offs and landings for the month:

NOVEMBER

YEAR-TO-DATE

		2018	2017	Increase (Decrease)	Percent Difference	2018	2017	Increase (Decrease)	Percent Difference
Major Airlines		903	913	(10)	-1.10%	9,696	9,317	379	4.07%
Regional Airlines		830	675	155	22.96%	8,163	8,601	(438)	-5.09%
General Aviation		1,898	2,400	(502)	-20.92%	23,374	24,084	(710)	-2.95%
Military		31	45	(14)	-31.11%	516	514	2	0.39%
Total Itinerant		3,662	4,033	(371)	-9.20%	41,749	42,516	(767)	-1.80%
Total Local		2,338	2,629	(291)	-11.07%	26,717	31,602	(4,885)	-15.46%
TOTAL OPERATIONS		6,000	6,662	(662)	-9.94%	68,466	74,118	(5,652)	-7.63%

