

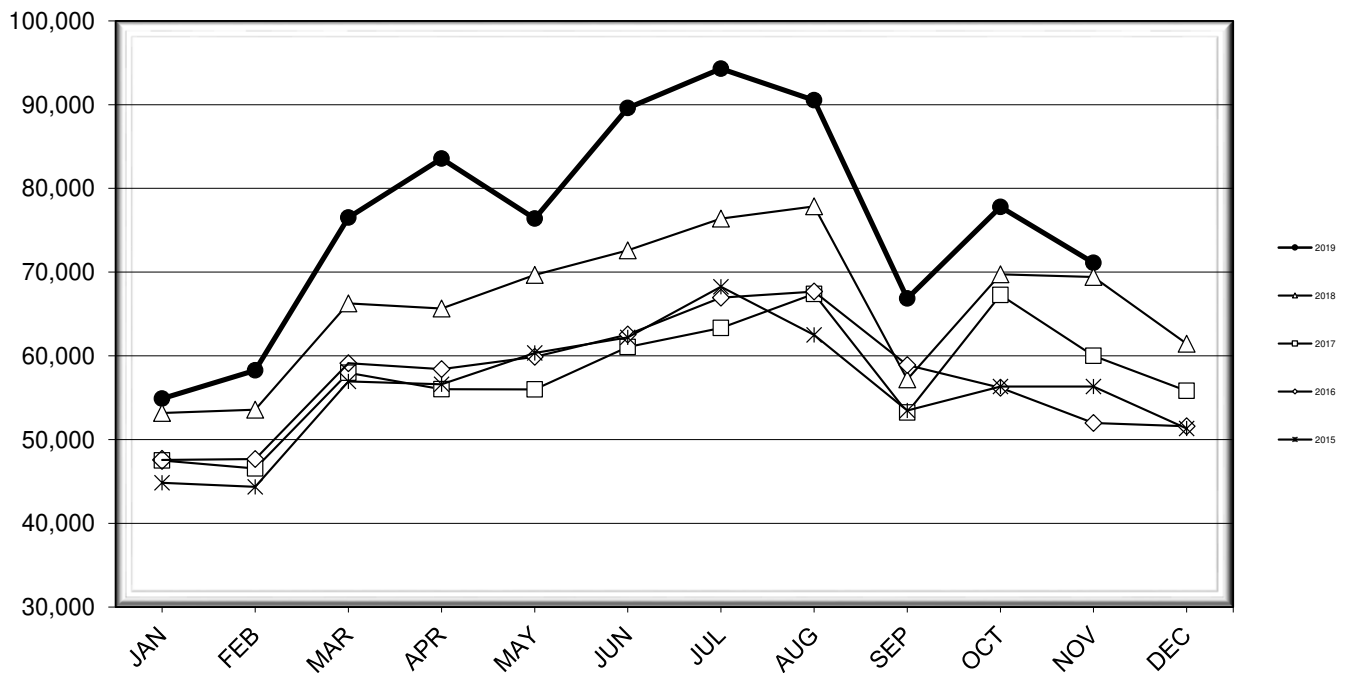


LEHIGH VALLEY INTERNATIONAL AIRPORT MONTHLY TRAFFIC REPORT NOVEMBER 2019

TOTAL PASSENGER TRAFFIC COMPARISON

Month	2019	Percent Difference	2018	2017	2016	2015
January	54,895	3.23%	53,177	47,515	47,570	44,848
February	58,276	8.80%	53,564	46,549	47,675	44,358
March	76,512	15.46%	66,267	57,977	59,121	56,939
April	83,560	27.28%	65,648	56,012	58,420	56,606
May	76,400	9.65%	69,675	55,996	59,880	60,335
June	89,609	23.43%	72,600	61,044	62,542	62,200
July	94,298	23.44%	76,394	63,336	66,953	68,256
August	90,524	16.28%	77,851	67,402	67,673	62,497
September	66,854	16.89%	57,195	53,228	58,906	53,474
October	77,794	11.56%	69,736	67,261	56,198	56,335
November	71,098	2.43%	69,414	60,008	51,971	56,326
December			61,453	55,826	51,596	51,331

COMPARISON OF TOTAL PASSENGERS



**LEHIGH VALLEY INTERNATIONAL AIRPORT (ABE)
MONTHLY TRAFFIC REPORT
NOVEMBER 2019**

	NOVEMBER				YEAR-TO-DATE			
	2019	2018	Increase (Decrease)	Percent Difference	2019	2018	Increase (Decrease)	Percent Difference
MAJOR AIRLINES:								
Passengers								
Enplaned	2,643	2,843	(200)	-7.03%	28,861	31,848	(2,987)	-9.38%
Deplaned	2,622	2,912	(290)	-9.96%	27,474	30,359	(2,885)	-9.50%
Sub-total	5,265	5,755	(490)	-8.51%	56,335	62,207	(5,872)	-9.44%
REGIONAL AIRLINES:								
Passengers								
Enplaned	32,517	31,947	570	1.78%	392,651	336,352	56,299	16.74%
Deplaned	33,316	31,712	1,604	5.06%	390,834	332,962	57,872	17.38%
Sub-total	65,833	63,659	2,174	3.42%	783,485	669,314	114,171	17.06%
TOTAL PASSENGERS	71,098	69,414	1,684	2.43%	839,820	731,521	108,299	14.80%
CARGO:								
Enplaned	8,111,995	8,497,295	(385,300)	-4.53%	86,399,903	96,067,728	(9,667,825)	-10.06%
Deplaned	8,248,258	7,781,633	466,625	6.00%	75,657,379	91,778,949	(16,121,570)	-17.57%
TOTAL CARGO	16,360,253	16,278,928	81,325	0.50%	162,057,282	187,846,677	(25,789,395)	-13.73%
CUSTOMS: Entries								
	15	14	1	7.14%	160	172	(12)	-6.98%

MONTHLY AIRCRAFT ACTIVITY

The FEDERAL AVIATION ADMINISTRATION
AIR TRAFFIC CONTROL TOWER at LVIA recorded
the following aircraft take-offs and landings for the month:

	NOVEMBER				YEAR-TO-DATE			
	2019	2018	Increase (Decrease)	Percent Difference	2019	2018	Increase (Decrease)	Percent Difference
Major Airlines	1,049	903	146	16.17%	10,514	9,696	818	8.44%
Regional Airlines	723	830	(107)	-12.89%	8,992	8,163	829	10.16%
General Aviation	2,557	1,898	659	34.72%	26,637	23,374	3,263	13.96%
Military	32	31	1	3.23%	444	516	(72)	-13.95%
Total Itinerant	4,361	3,662	699	19.09%	46,587	41,749	4,838	11.59%
Total Local	2,991	2,338	653	27.93%	34,722	26,717	8,005	29.96%
TOTAL OPERATIONS	7,352	6,000	1,352	22.53%	81,309	68,466	12,843	18.76%

