

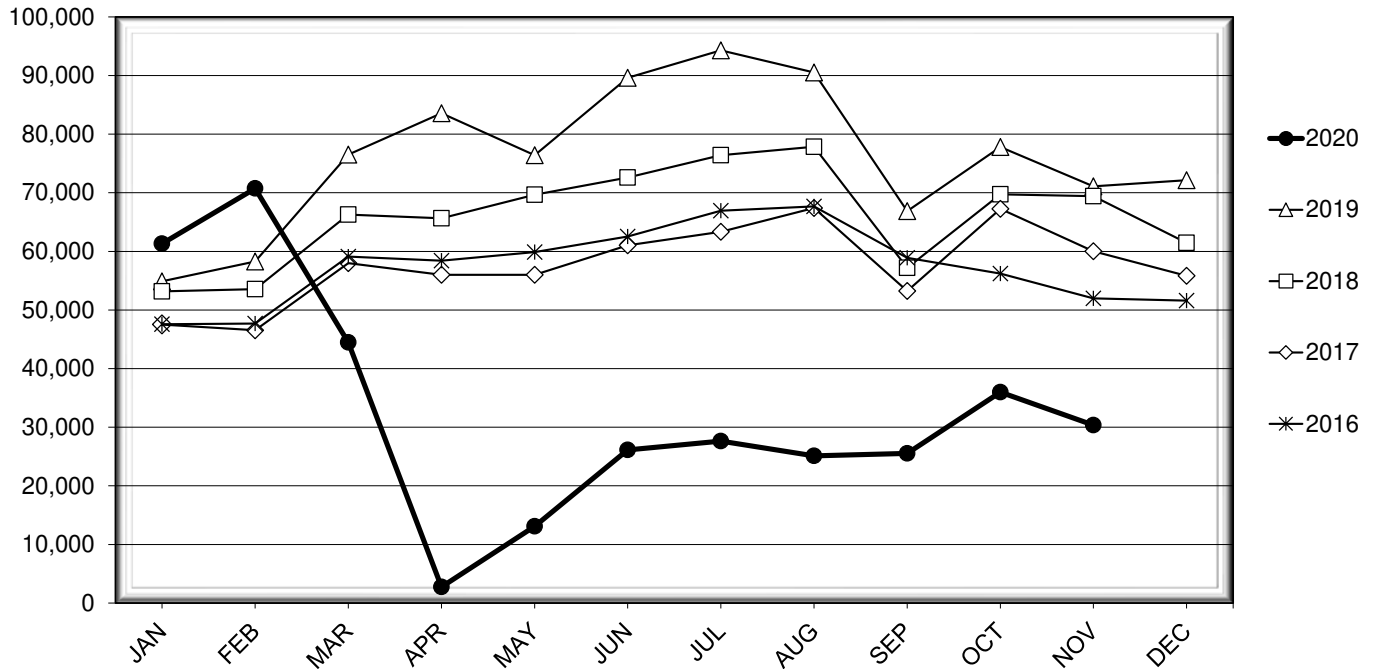


LEHIGH VALLEY INTERNATIONAL AIRPORT MONTHLY TRAFFIC REPORT NOVEMBER 2020

TOTAL PASSENGER TRAFFIC COMPARISON

Month	2020	Percent Difference	2019	2018	2017	2016
January	61,309	11.68%	54,895	53,177	47,515	47,570
February	70,732	21.37%	58,276	53,564	46,549	47,675
March **	44,478	-41.87%	76,512	66,267	57,977	59,121
April	2,749	-96.71%	83,560	65,648	56,012	58,420
May	13,107	-82.84%	76,400	69,675	55,996	59,880
June	26,123	-70.85%	89,609	72,600	61,044	62,542
July	27,612	-70.72%	94,298	76,394	63,336	66,953
August	25,116	-72.25%	90,524	77,851	67,402	67,673
September	25,545	-61.79%	66,854	57,195	53,228	58,906
October	35,995	-53.73%	77,794	69,736	67,261	56,198
November	30,367	-57.29%	71,098	69,414	60,008	51,971
December			72,150	61,453	55,826	51,596

COMPARISON OF TOTAL PASSENGERS



** COVID-19 PANDEMIC

**LEHIGH VALLEY INTERNATIONAL AIRPORT (ABE)
MONTHLY TRAFFIC REPORT
NOVEMBER 2020**

NOVEMBER

YEAR-TO-DATE

		2020	2019	Increase (Decrease)	Percent Difference	2020	2019	Increase (Decrease)	Percent Difference
MAJOR AIRLINES:									
Passengers									
Enplaned		0	2,643	(2,643)	-100.00%	5,713	28,861	(23,148)	-80.21%
Deplaned		5	2,622	(2,617)	-99.81%	5,786	27,474	(21,688)	-78.94%
Sub-total		5	5,265	(5,260)	-99.91%	11,499	56,335	(44,836)	-79.59%
REGIONAL AIRLINES:									
Passengers									
Enplaned		15,132	32,517	(17,385)	-53.46%	175,745	392,651	(216,906)	-55.24%
Deplaned		15,230	33,316	(18,086)	-54.29%	175,889	390,834	(214,945)	-55.00%
Sub-total		30,362	65,833	(35,471)	-53.88%	351,634	783,485	(431,851)	-55.12%
TOTAL PASSENGERS		30,367	71,098	(40,731)	-57.29%	363,133	839,820	(476,687)	-56.76%
CARGO:									
Enplaned		8,450,542	8,111,995	338,547	4.17%	91,353,813	86,399,903	4,953,910	5.73%
Deplaned		8,702,144	8,248,258	453,886	5.50%	98,866,579	75,657,379	23,209,200	30.68%
TOTAL CARGO		17,152,686	16,360,253	792,433	4.84%	190,220,392	162,057,282	28,163,110	17.38%
CUSTOMS: Entries									
		2	15	(13)	-86.67%	49	160	(111)	-69.38%

MONTHLY AIRCRAFT ACTIVITY

The FEDERAL AVIATION ADMINISTRATION
AIR TRAFFIC CONTROL TOWER at LVIA recorded
the following aircraft take-offs and landings for the month:

NOVEMBER

YEAR-TO-DATE

		2020	2019	Increase (Decrease)	Percent Difference	2020	2019	Increase (Decrease)	Percent Difference
Major Airlines		768	1,049	(281)	-26.79%	8,047	10,514	(2,467)	-23.46%
Regional Airlines		475	723	(248)	-34.30%	5,120	8,992	(3,872)	-43.06%
General Aviation		2,728	2,557	171	6.69%	24,845	26,637	(1,792)	-6.73%
Military		41	32	9	28.13%	412	444	(32)	-7.21%
Total Itinerant		4,012	4,361	(349)	-8.00%	38,424	46,587	(8,163)	-17.52%
Total Local		1,906	2,991	(1,085)	-36.28%	21,555	34,722	(13,167)	-37.92%
TOTAL OPERATIONS		5,918	7,352	(1,434)	-19.50%	59,979	81,309	(21,330)	-26.23%

