

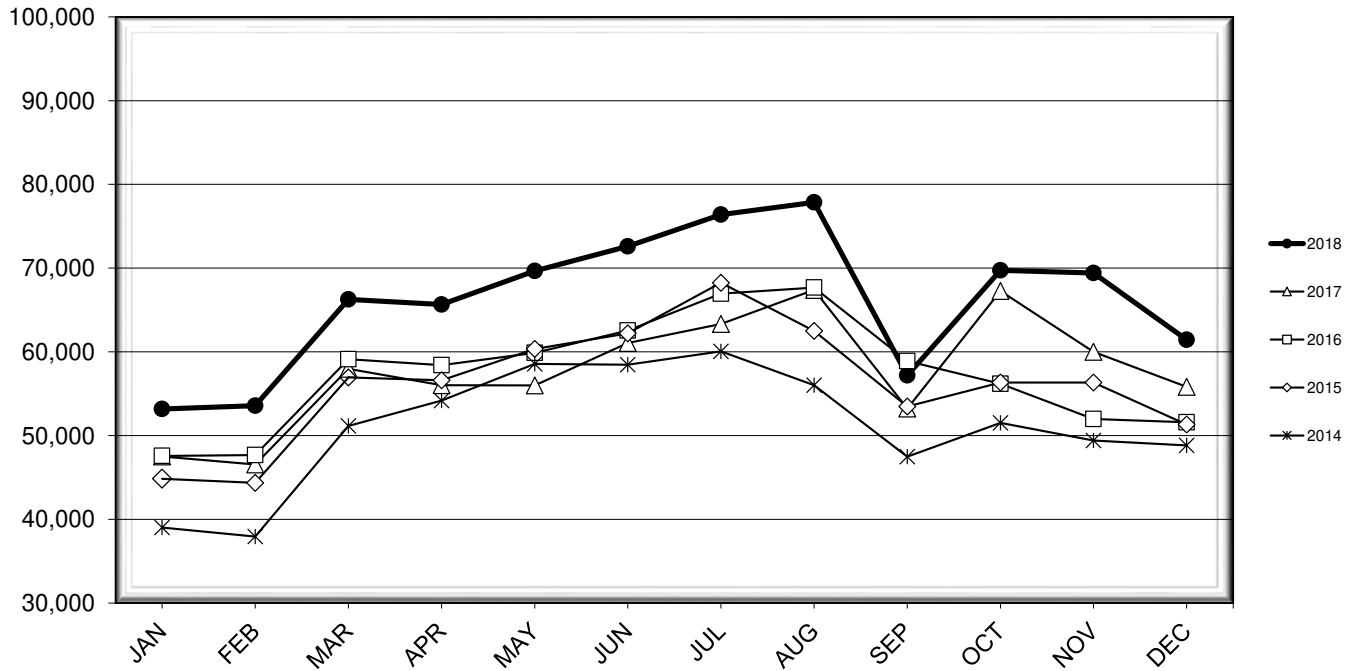


LEHIGH VALLEY INTERNATIONAL AIRPORT MONTHLY TRAFFIC REPORT DECEMBER 2018

TOTAL PASSENGER TRAFFIC COMPARISON

Month	2018	Percent Difference	2017	2016	2015	2014
January	53,177	11.92%	47,515	47,570	44,848	39,020
February	53,564	15.07%	46,549	47,675	44,358	37,943
March	66,267	14.30%	57,977	59,121	56,939	51,161
April	65,648	17.20%	56,012	58,420	56,606	54,173
May	69,675	24.43%	55,996	59,880	60,335	58,567
June	72,600	18.93%	61,044	62,542	62,200	58,471
July	76,394	20.62%	63,336	66,953	68,256	60,064
August	77,851	15.50%	67,402	67,673	62,497	56,021
September	57,195	7.45%	53,228	58,906	53,474	47,471
October	69,736	3.68%	67,261	56,198	56,335	51,509
November	69,414	15.67%	60,008	51,971	56,326	49,414
December	61,453	10.08%	55,826	51,596	51,331	48,836

COMPARISON OF TOTAL PASSENGERS



**LEHIGH VALLEY INTERNATIONAL AIRPORT (ABE)
MONTHLY TRAFFIC REPORT
DECEMBER 2018**

DECEMBER

YEAR-TO-DATE

		2018	2017	Increase (Decrease)	Percent Difference	2018	2017	Increase (Decrease)	Percent Difference
MAJOR AIRLINES:									
Passengers									
Enplaned		1,884	1,525	359	23.54%	33,732	29,961	3,771	12.59%
Deplaned		1,743	1,329	414	31.15%	32,102	27,300	4,802	17.59%
Sub-total		3,627	2,854	773	27.08%	65,834	57,261	8,573	14.97%
REGIONAL AIRLINES:									
Passengers									
Enplaned		28,842	26,558	2,284	8.60%	365,194	317,455	47,739	15.04%
Deplaned		28,984	26,414	2,570	9.73%	361,946	317,438	44,508	14.02%
Sub-total		57,826	52,972	4,854	9.16%	727,140	634,893	92,247	14.53%
TOTAL PASSENGERS		61,453	55,826	5,627	10.08%	792,974	692,154	100,820	14.57%
CARGO:									
Enplaned		9,472,163	10,118,822	(646,659)	-6.39%	105,539,891	99,502,411	6,037,480	6.07%
Deplaned		8,954,663	11,997,888	(3,043,225)	-25.36%	100,733,612	107,679,557	(6,945,945)	-6.45%
TOTAL CARGO		18,426,826	22,116,710	(3,689,884)	-16.68%	206,273,503	207,181,968	(908,465)	-0.44%
CUSTOMS: Entries									
		14	20	(6)	-30.00%	186	191	(5)	-2.62%

MONTHLY AIRCRAFT ACTIVITY

The FEDERAL AVIATION ADMINISTRATION
AIR TRAFFIC CONTROL TOWER at LVIA recorded
the following aircraft take-offs and landings for the month:

DECEMBER

YEAR-TO-DATE

		2018	2017	Increase (Decrease)	Percent Difference	2018	2017	Increase (Decrease)	Percent Difference
Major Airlines		956	910	46	5.05%	10,652	10,227	425	4.16%
Regional Airlines		705	653	52	7.96%	8,868	9,254	(386)	-4.17%
General Aviation		2,034	1,793	241	13.44%	25,408	25,877	(469)	-1.81%
Military		32	42	(10)	-23.81%	548	556	(8)	-1.44%
Total Itinerant		3,727	3,398	329	9.68%	45,476	45,914	(438)	-0.95%
Total Local		3,038	2,074	964	46.48%	29,755	33,676	(3,921)	-11.64%
TOTAL OPERATIONS		6,765	5,472	1,293	23.63%	75,231	79,590	(4,359)	-5.48%

**LEHIGH VALLEY INTERNATIONAL AIRPORT (ABE)
MONTHLY TRAFFIC REPORT
AIRLINE PASSENGER STATISTICS**

AIRLINE / OPERATOR	DECEMBER ENPLANEMENT DATA				DECEMBER DEPLANEMENT DATA			
	<i>2018</i>	<i>2017</i>	<i>Difference</i>	<i>% Change</i>	<i>2018</i>	<i>2017</i>	<i>Difference</i>	<i>% Change</i>
Allegiant Air	9,798	10,725	(927)	-8.64%	9,634	10,470	(836)	-7.98%
Endeavor Airlines	3,283	-	3,283	N/A	3,606	-	3,606	N/A
Express Jet	-	3,293	(3,293)	-100.00%	-	3,574	(3,574)	-100.00%
Republic	57	-	57	N/A	57	-	57	N/A
Skywest	2,811	2,273	538	23.67%	2,971	2,458	513	20.87%
Delta Connection Subtotal	6,151	5,566	585	10.51%	6,634	6,032	602	9.98%
Delta Airlines Mainline	1,884	1,525	359	23.54%	1,743	1,329	414	31.15%
Delta Airlines Total	8,035	7,091	944	13.31%	8,377	7,361	1,016	13.80%
Express Jet	-	81	(81)	-100.00%	-	69	(69)	-100.00%
Skywest	2,582	1,502	1,080	71.90%	2,653	1,461	1,192	81.59%
Trans States Airlines	-	920	(920)	-100.00%	-	1,015	(1,015)	-100.00%
Air Wisconsin	1,046	-	1,046	N/A	1,090	-	1,090	N/A
United Shuttle	1,263	1,217	46	3.78%	1,090	1,065	25	2.35%
United Airlines Total	4,891	3,720	1,171	31.48%	4,833	3,610	1,223	33.88%
Air Wisconsin	-	2,341	(2,341)	-100.00%	-	2,151	(2,151)	-100.00%
Trans States Airlines	2	-	2	N/A	44	-	44	N/A
PSA Airlines	5,620	4,002	1,618	40.43%	5,591	3,945	1,646	41.72%
Skywest	-	-	0	N/A	8	-	8	N/A
Piedmont Airlines	2,380	-	2,380	N/A	2,240	2	2,238	111900.00%
American Airlines Total	8,002	6,343	1,659	26.15%	7,883	6,098	1,785	29.27%
Charters	-	204	(204)	-100.00%	-	204	(204)	-100.00%

MONTHLY TOTALS	DECEMBER ENPLANEMENT DATA				DECEMBER DEPLANEMENT DATA			
	<i>2018</i>	<i>2017</i>	<i>Difference</i>	<i>% Change</i>	<i>2018</i>	<i>2017</i>	<i>Difference</i>	<i>% Change</i>
	30,726	28,083	2,643	9.41%	30,727	27,743	2,984	10.76%

TOTAL PASSENGERS FOR DECEMBER 2018: 61,453
PERCENT CHANGE VERSUS DECEMBER 2017: +10.08%