

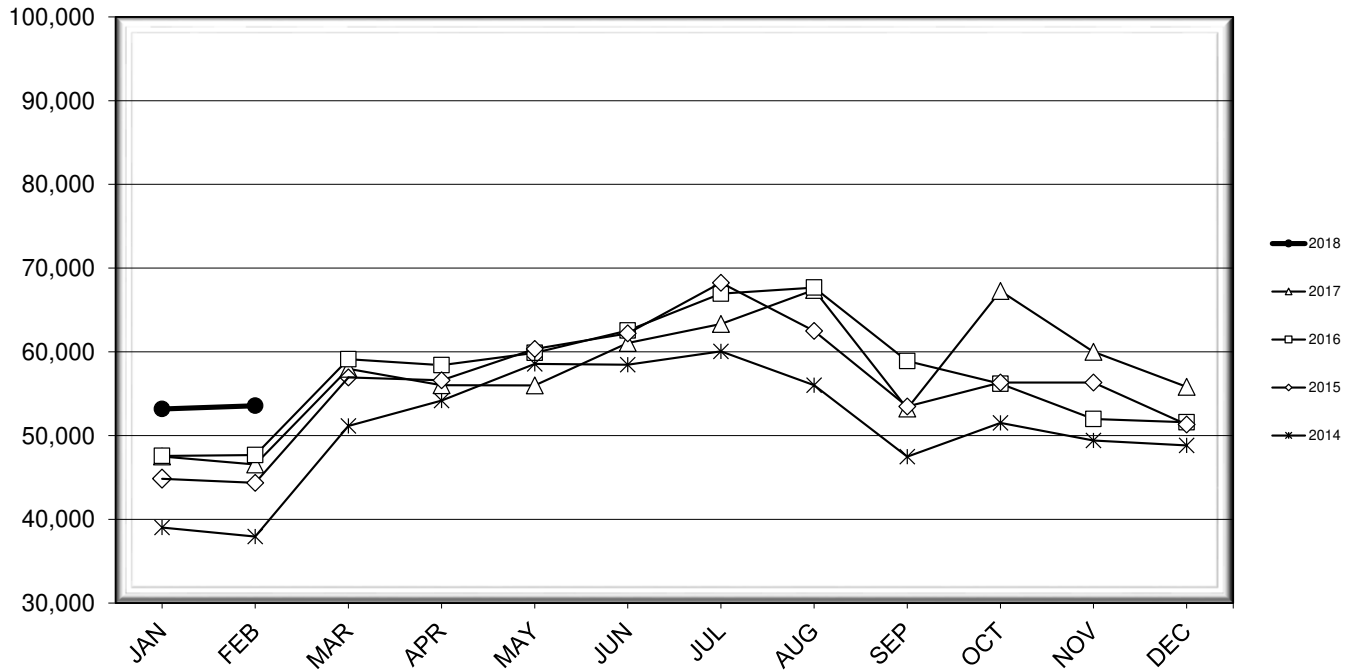


LEHIGH VALLEY INTERNATIONAL AIRPORT MONTHLY TRAFFIC REPORT FEBRUARY 2018

TOTAL PASSENGER TRAFFIC COMPARISON

Month	2018	Percent Difference	2017	2016	2015	2014
January	53,177	11.92%	47,515	47,570	44,848	39,020
February	53,564	15.07%	46,549	47,675	44,358	37,943
March			57,977	59,121	56,939	51,161
April			56,012	58,420	56,606	54,173
May			55,996	59,880	60,335	58,567
June			61,044	62,542	62,200	58,471
July			63,336	66,953	68,256	60,064
August			67,402	67,673	62,497	56,021
September			53,228	58,906	53,474	47,471
October			67,261	56,198	56,335	51,509
November			60,008	51,971	56,326	49,414
December			55,826	51,596	51,331	48,836

COMPARISON OF TOTAL PASSENGERS



**LEHIGH VALLEY INTERNATIONAL AIRPORT (ABE)
MONTHLY TRAFFIC REPORT
FEBRUARY 2018**

FEBRUARY

YEAR-TO-DATE

		2018	2017	Increase (Decrease)	Percent Difference	2018	2017	Increase (Decrease)	Percent Difference
MAJOR AIRLINES:									
Passengers									
Enplaned		3,511	2,588	923	35.66%	6,033	4,661	1,372	29.44%
Deplaned		3,117	2,237	880	39.34%	5,219	3,990	1,229	30.80%
Sub-total		6,628	4,825	1,803	37.37%	11,252	8,651	2,601	30.07%
REGIONAL AIRLINES:									
Passengers									
Enplaned		24,020	21,021	2,999	14.27%	48,481	43,191	5,290	12.25%
Deplaned		22,916	20,703	2,213	10.69%	47,008	42,222	4,786	11.34%
Sub-total		46,936	41,724	5,212	12.49%	95,489	85,413	10,076	11.80%
TOTAL PASSENGERS		53,564	46,549	7,015	15.07%	106,741	94,064	12,677	13.48%
CARGO:									
Enplaned		7,434,963	8,564,541	(1,129,578)	-13.19%	15,692,911	17,950,590	(2,257,679)	-12.58%
Deplaned		6,494,926	8,559,336	(2,064,410)	-24.12%	14,959,455	17,999,218	(3,039,763)	-16.89%
TOTAL CARGO		13,929,889	17,123,877	(3,193,988)	-18.65%	30,652,366	35,949,808	(5,297,442)	-14.74%
CUSTOMS: Entries									
		10	11	(1)	-9.09%	28	21	7	33.33%

MONTHLY AIRCRAFT ACTIVITY

The FEDERAL AVIATION ADMINISTRATION
AIR TRAFFIC CONTROL TOWER at LVIA recorded
the following aircraft take-offs and landings for the month:

FEBRUARY

YEAR-TO-DATE

	2018	2017	Increase (Decrease)	Percent Difference	2018	2017	Increase (Decrease)	Percent Difference
Major Airlines	726	745	(19)	-2.55%	1,534	1,510	24	1.59%
Regional Airlines	628	703	(75)	-10.67%	1,338	1,430	(92)	-6.43%
General Aviation	1,596	2,037	(441)	-21.65%	3,228	3,581	(353)	-9.86%
Military	36	53	(17)	-32.08%	111	82	29	35.37%
Total Itinerant	2,986	3,538	(552)	-15.60%	6,211	6,603	(392)	-5.94%
Total Local	1,750	2,920	(1,170)	-40.07%	3,810	4,918	(1,108)	-22.53%
TOTAL OPERATIONS	4,736	6,458	(1,722)	-26.66%	10,021	11,521	(1,500)	-13.02%

**LEHIGH VALLEY INTERNATIONAL AIRPORT (ABE)
MONTHLY TRAFFIC REPORT
AIRLINE PASSENGER STATISTICS**

AIRLINE / OPERATOR	FEBRUARY ENPLANEMENT DATA				FEBRUARY DEPLANEMENT DATA			
	2018	2017	Difference	% Change	2018	2017	Difference	% Change
Allegiant Air	10,934	8,079	2,855	35.34%	9,924	7,586	2,338	30.82%
Endeavor Airlines	1,018	1,238	(220)	-17.77%	1,022	1,375	(353)	-25.67%
Express Jet	609	1,982	(1,373)	-69.27%	627	2,222	(1,595)	-71.78%
Skywest	2,473	1,071	1,402	130.91%	2,645	937	1,708	182.28%
Delta Connection Subtotal	4,100	4,291	(191)	-4.45%	4,294	4,534	(240)	-5.29%
Delta Air Lines Mainline	3,511	2,588	923	35.66%	2,941	2,237	704	31.47%
Delta Airlines Total	7,611	6,879	732	10.64%	7,235	6,771	464	6.85%
Express Jet	-	829	(829)	-100.00%	-	1,039	(1,039)	-100.00%
Skywest	914	-	914	N/A	994	-	994	N/A
Trans States Airlines	-	748	(748)	-100.00%	-	989	(989)	-100.00%
CommutAir	50	-	50	N/A	50	-	50	N/A
Air Wisconsin	1,011	-	1,011	N/A	1,114	-	1,114	N/A
United Shuttle	1,174	912	262	28.73%	906	765	141	18.43%
United Express Subtotal	3,149	2,489	660	26.52%	3,064	2,793	271	9.70%
United Mainline	-	-	0	N/A	176	-	176	N/A
United Airlines Total	3,149	2,489	660	26.52%	3,240	2,793	447	16.00%
Air Wisconsin	870	977	(107)	-10.95%	843	827	16	1.93%
PSA Airlines	3,825	3,847	(22)	-0.57%	3,659	3,872	(213)	-5.50%
Piedmont Airlines	1,024	1,225	(201)	-16.41%	1,012	978	34	3.48%
American Airlines Total	5,719	6,049	(330)	-5.46%	5,514	5,677	(163)	-2.87%
Charters	118	113	5	4.42%	120	113	7	6.19%

MONTHLY TOTALS	FEBRUARY ENPLANEMENT DATA				FEBRUARY DEPLANEMENT DATA			
	2018	2017	Difference	% Change	2018	2017	Difference	% Change
	27,531	23,609	3,922	16.61%	26,033	22,940	3,093	13.48%

TOTAL PASSENGERS FOR FEBRUARY 2018: 53,564
PERCENT CHANGE VERSUS FEBRUARY 2017: +15.07%