

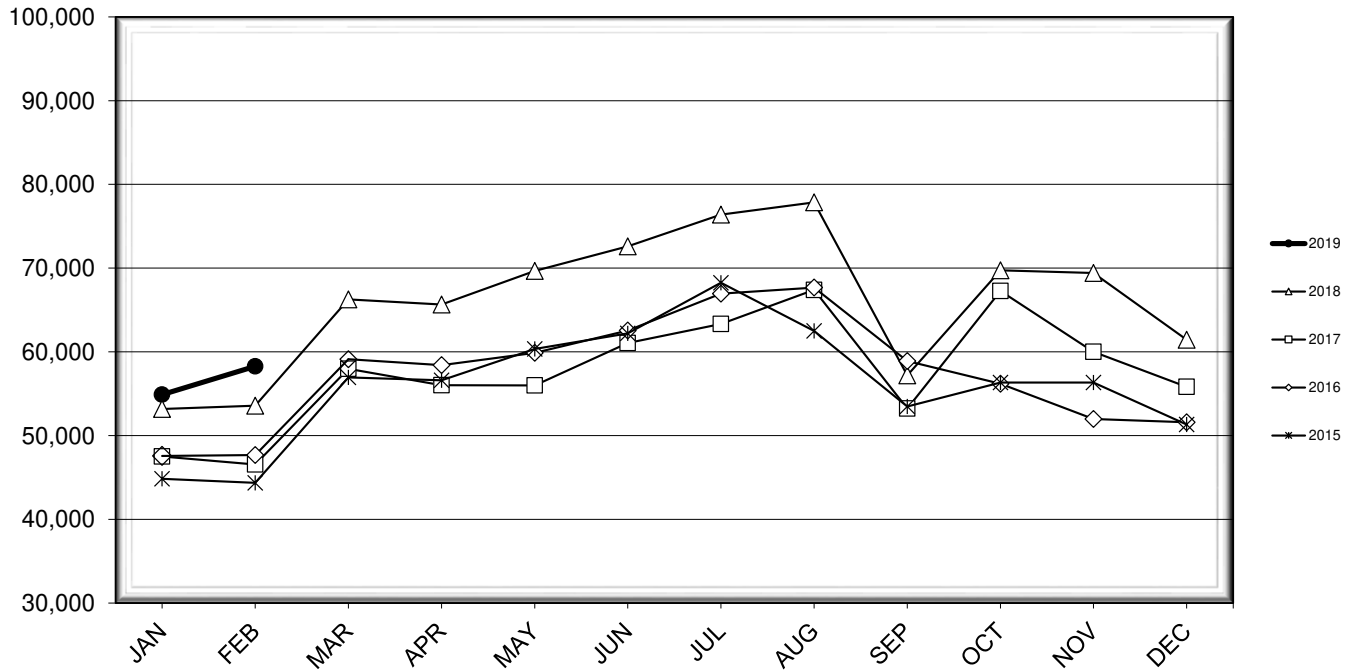


# LEHIGH VALLEY INTERNATIONAL AIRPORT MONTHLY TRAFFIC REPORT FEBRUARY 2019

## TOTAL PASSENGER TRAFFIC COMPARISON

Month	2019	Percent Difference	2018	2017	2016	2015
January	54,895	3.23%	53,177	47,515	47,570	44,848
February	58,276	8.80%	53,564	46,549	47,675	44,358
March			66,267	57,977	59,121	56,939
April			65,648	56,012	58,420	56,606
May			69,675	55,996	59,880	60,335
June			72,600	61,044	62,542	62,200
July			76,394	63,336	66,953	68,256
August			77,851	67,402	67,673	62,497
September			57,195	53,228	58,906	53,474
October			69,736	67,261	56,198	56,335
November			69,414	60,008	51,971	56,326
December			61,453	55,826	51,596	51,331

## COMPARISON OF TOTAL PASSENGERS



**LEHIGH VALLEY INTERNATIONAL AIRPORT (ABE)  
MONTHLY TRAFFIC REPORT  
FEBRUARY 2019**

**FEBRUARY**

**YEAR-TO-DATE**

		<b>2019</b>	<b>2018</b>	<b>Increase (Decrease)</b>	<b>Percent Difference</b>	<b>2019</b>	<b>2018</b>	<b>Increase (Decrease)</b>	<b>Percent Difference</b>
<b>MAJOR AIRLINES:</b>									
Passengers									
Enplaned		2,818	3,511	(693)	-19.74%	5,286	6,033	(747)	-12.38%
Deplaned		2,499	3,117	(618)	-19.83%	4,831	5,219	(388)	-7.43%
Sub-total		5,317	6,628	(1,311)	-19.78%	10,117	11,252	(1,135)	-10.09%
<b>REGIONAL AIRLINES:</b>									
Passengers									
Enplaned		27,050	24,020	3,030	12.61%	53,089	48,481	4,608	9.50%
Deplaned		25,909	22,916	2,993	13.06%	49,965	47,008	2,957	6.29%
Sub-total		52,959	46,936	6,023	12.83%	103,054	95,489	7,565	7.92%
<b>TOTAL PASSENGERS</b>		<b>58,276</b>	<b>53,564</b>	<b>4,712</b>	<b>8.80%</b>	<b>113,171</b>	<b>106,741</b>	<b>6,430</b>	<b>6.02%</b>
<b>CARGO:</b>									
Enplaned		8,276,013	7,434,963	841,050	11.31%	16,497,002	15,692,911	804,091	5.12%
Deplaned		6,208,324	6,494,926	(286,602)	-4.41%	13,186,928	14,959,455	(1,772,527)	-11.85%
<b>TOTAL CARGO</b>		<b>14,484,337</b>	<b>13,929,889</b>	<b>554,448</b>	<b>3.98%</b>	<b>29,683,930</b>	<b>30,652,366</b>	<b>(968,436)</b>	<b>-3.16%</b>
<b>CUSTOMS: Entries</b>									
		12	10	2	20.00%	24	28	(4)	-14.29%

**MONTHLY AIRCRAFT ACTIVITY**

The FEDERAL AVIATION ADMINISTRATION  
AIR TRAFFIC CONTROL TOWER at LVIA recorded  
the following aircraft take-offs and landings for the month:

**FEBRUARY**

**YEAR-TO-DATE**

		<b>2019</b>	<b>2018</b>	<b>Increase (Decrease)</b>	<b>Percent Difference</b>	<b>2019</b>	<b>2018</b>	<b>Increase (Decrease)</b>	<b>Percent Difference</b>
Major Airlines		804	726	78	10.74%	1,577	1,534	43	2.80%
Regional Airlines		657	628	29	4.62%	1,316	1,338	(22)	-1.64%
General Aviation		1,851	1,596	255	15.98%	3,648	3,228	420	13.01%
Military		32	36	(4)	-11.11%	68	111	(43)	-38.74%
Total Itinerant		3,344	2,986	358	11.99%	6,609	6,211	398	6.41%
Total Local		2,483	1,750	733	41.89%	3,935	3,810	125	3.28%
<b>TOTAL OPERATIONS</b>		<b>5,827</b>	<b>4,736</b>	<b>1,091</b>	<b>23.04%</b>	<b>10,544</b>	<b>10,021</b>	<b>523</b>	<b>5.22%</b>

