

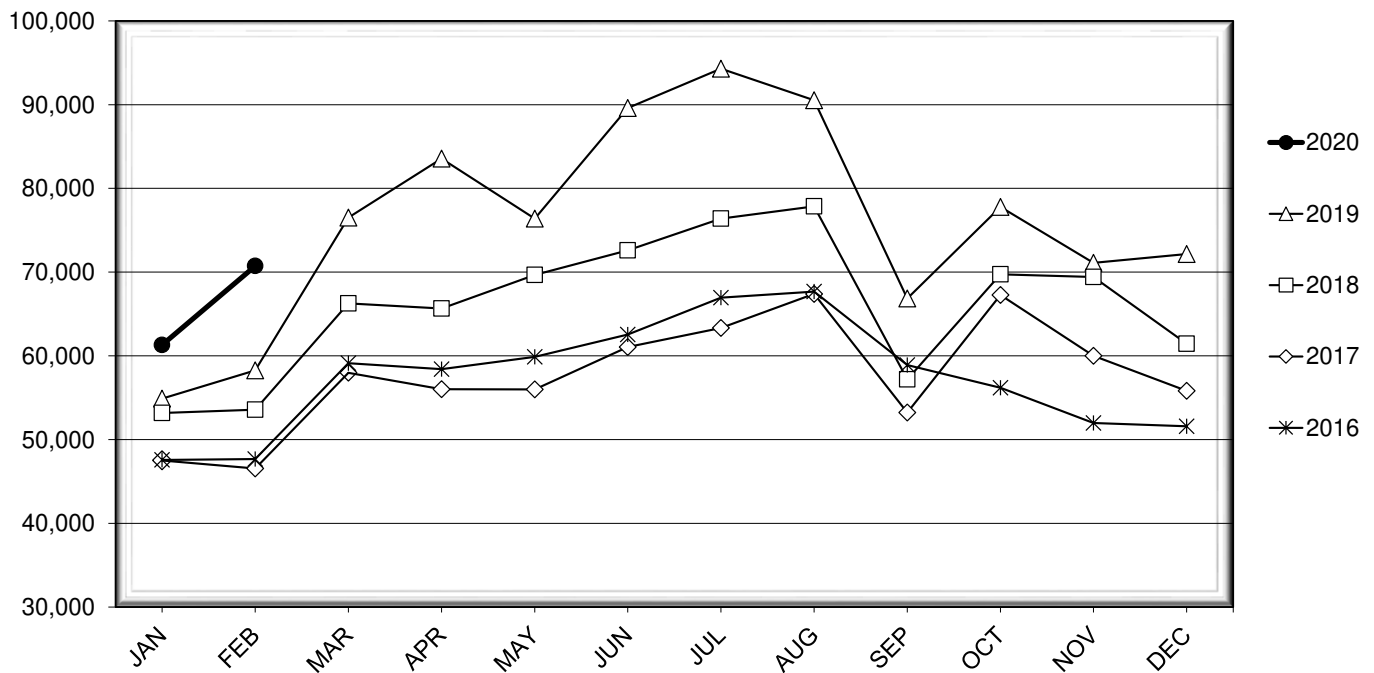


LEHIGH VALLEY INTERNATIONAL AIRPORT MONTHLY TRAFFIC REPORT FEBRUARY 2020

TOTAL PASSENGER TRAFFIC COMPARISON

Month	2020	Percent Difference	2019	2018	2017	2016
January	61,309	11.68%	54,895	53,177	47,515	47,570
February	70,732	21.37%	58,276	53,564	46,549	47,675
March			76,512	66,267	57,977	59,121
April			83,560	65,648	56,012	58,420
May			76,400	69,675	55,996	59,880
June			89,609	72,600	61,044	62,542
July			94,298	76,394	63,336	66,953
August			90,524	77,851	67,402	67,673
September			66,854	57,195	53,228	58,906
October			77,794	69,736	67,261	56,198
November			71,098	69,414	60,008	51,971
December			72,150	61,453	55,826	51,596

COMPARISON OF TOTAL PASSENGERS



**LEHIGH VALLEY INTERNATIONAL AIRPORT (ABE)
MONTHLY TRAFFIC REPORT
FEBRUARY 2020**

FEBRUARY

YEAR-TO-DATE

		2020	2019	Increase (Decrease)	Percent Difference	2020	2019	Increase (Decrease)	Percent Difference
MAJOR AIRLINES:									
Passengers									
Enplaned		2,289	2,818	(529)	-18.77%	4,403	5,286	(883)	-16.70%
Deplaned		2,544	2,499	45	1.80%	4,459	4,831	(372)	-7.70%
Sub-total		4,833	5,317	(484)	-9.10%	8,862	10,117	(1,255)	-12.40%
REGIONAL AIRLINES:									
Passengers									
Enplaned		33,779	27,050	6,729	24.88%	63,347	53,089	10,258	19.32%
Deplaned		32,120	25,909	6,211	23.97%	59,832	49,965	9,867	19.75%
Sub-total		65,899	52,959	12,940	24.43%	123,179	103,054	20,125	19.53%
TOTAL PASSENGERS		70,732	58,276	12,456	21.37%	132,041	113,171	18,870	16.67%
CARGO:									
Enplaned		8,677,310	8,276,013	401,297	4.85%	16,736,307	16,497,002	239,305	1.45%
Deplaned		8,094,642	6,208,324	1,886,318	30.38%	16,233,881	13,186,928	3,046,953	23.11%
TOTAL CARGO		16,771,952	14,484,337	2,287,615	15.79%	32,970,188	29,683,930	3,286,258	11.07%
CUSTOMS: Entries									
		7	12	(5)	-41.67%	15	24	(9)	-37.50%

MONTHLY AIRCRAFT ACTIVITY

The FEDERAL AVIATION ADMINISTRATION
AIR TRAFFIC CONTROL TOWER at LVIA recorded
the following aircraft take-offs and landings for the month:

FEBRUARY

YEAR-TO-DATE

		2020	2019	Increase (Decrease)	Percent Difference	2020	2019	Increase (Decrease)	Percent Difference
Major Airlines		1,090	804	286	35.57%	2,147	1,577	570	36.14%
Regional Airlines		641	657	(16)	-2.44%	1,263	1,316	(53)	-4.03%
General Aviation		2,086	1,851	235	12.70%	4,120	3,648	472	12.94%
Military		25	32	(7)	-21.88%	82	68	14	20.59%
Total Itinerant		3,842	3,344	498	14.89%	7,612	6,609	1,003	15.18%
Total Local		2,199	2,483	(284)	-11.44%	4,802	3,935	867	22.03%
TOTAL OPERATIONS		6,041	5,827	214	3.67%	12,414	10,544	1,870	17.74%

**LEHIGH VALLEY INTERNATIONAL AIRPORT (ABE)
MONTHLY TRAFFIC REPORT
AIRLINE PASSENGER STATISTICS**

AIRLINE / OPERATOR	FEBRUARY ENPLANEMENT DATA				FEBRUARY DEPLANEMENT DATA			
	2020	2019	Difference	% Change	2020	2019	Difference	% Change
Allegiant Air	16,830	11,158	5,672	50.83%	15,431	10,187	5,244	51.48%
Envoy	802	-	802	N/A	939	-	939	N/A
Piedmont	2,865	2,450	415	16.94%	2,503	2,084	419	20.11%
PSA	5,049	5,442	(393)	-7.22%	4,965	5,691	(726)	-12.76%
American Airlines Total	8,716	7,892	824	10.44%	8,407	7,775	632	8.13%
Endeavor	2,581	2,150	431	20.05%	2,446	2,274	172	7.56%
Skywest	2,471	2,663	(192)	-7.21%	2,622	2,699	(77)	-2.85%
Delta Connection Subtotal	5,052	4,813	239	4.97%	5,068	4,973	95	1.91%
Delta Air Lines Mainline	2,289	2,818	(529)	-18.77%	2,544	2,499	45	1.80%
Delta Air Lines Total	7,341	7,631	(290)	-3.80%	7,612	7,472	140	1.87%
Air Wisconsin	-	33	(33)	-100.00%	-	47	(47)	-100.00%
Express Jet	-	1,704	(1,704)	-100.00%	-	1,657	(1,657)	-100.00%
GoJet	2,004	-	2,004	N/A	2,228	-	2,228	N/A
Skywest	-	250	(250)	-100.00%	-	331	(331)	-100.00%
United Shuttle	1,032	1,071	(39)	-3.64%	839	805	34	4.22%
United Airlines Total	3,036	3,058	(22)	-0.72%	3,067	2,840	227	7.99%
Charters	145	129	16	12.40%	147	134	13	9.70%

MONTHLY TOTALS	FEBRUARY ENPLANEMENT DATA				FEBRUARY DEPLANEMENT DATA			
	2020	2019	Difference	% Change	2020	2019	Difference	% Change
	36,068	29,868	6,200	20.76%	34,664	28,408	6,256	22.02%

TOTAL PASSENGERS FOR FEBRUARY 2020: 70,732
PERCENT CHANGE VERSUS FEBRUARY 2019: +21.37%