

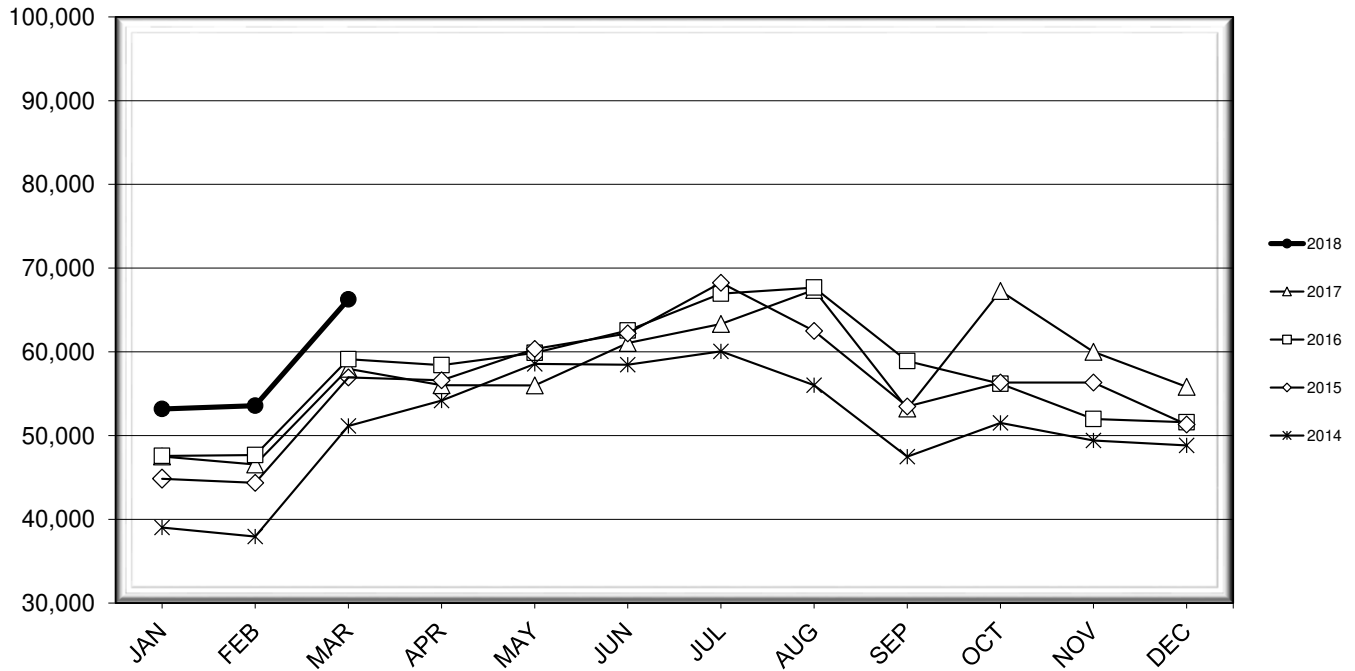


LEHIGH VALLEY INTERNATIONAL AIRPORT MONTHLY TRAFFIC REPORT MARCH 2018

TOTAL PASSENGER TRAFFIC COMPARISON

Month	2018	Percent Difference	2017	2016	2015	2014
January	53,177	11.92%	47,515	47,570	44,848	39,020
February	53,564	15.07%	46,549	47,675	44,358	37,943
March	66,267	14.30%	57,977	59,121	56,939	51,161
April			56,012	58,420	56,606	54,173
May			55,996	59,880	60,335	58,567
June			61,044	62,542	62,200	58,471
July			63,336	66,953	68,256	60,064
August			67,402	67,673	62,497	56,021
September			53,228	58,906	53,474	47,471
October			67,261	56,198	56,335	51,509
November			60,008	51,971	56,326	49,414
December			55,826	51,596	51,331	48,836

COMPARISON OF TOTAL PASSENGERS



**LEHIGH VALLEY INTERNATIONAL AIRPORT (ABE)
MONTHLY TRAFFIC REPORT
MARCH 2018**

MARCH

YEAR-TO-DATE

		2018	2017	Increase (Decrease)	Percent Difference	2018	2017	Increase (Decrease)	Percent Difference
MAJOR AIRLINES:									
Passengers									
Enplaned		2,966	3,241	(275)	-8.49%	8,999	7,902	1,097	13.88%
Deplaned		2,957	3,028	(71)	-2.34%	8,176	7,018	1,158	16.50%
Sub-total		5,923	6,269	(346)	-5.52%	17,175	14,920	2,255	15.11%
REGIONAL AIRLINES:									
Passengers									
Enplaned		30,401	25,546	4,855	19.00%	78,882	68,737	10,145	14.76%
Deplaned		29,943	26,162	3,781	14.45%	76,951	68,384	8,567	12.53%
Sub-total		60,344	51,708	8,636	16.70%	155,833	137,121	18,712	13.65%
TOTAL PASSENGERS		66,267	57,977	8,290	14.30%	173,008	152,041	20,967	13.79%
CARGO:									
Enplaned		7,594,679	9,214,001	(1,619,322)	-17.57%	23,287,590	27,164,591	(3,877,001)	-14.27%
Deplaned		7,568,615	9,505,101	(1,936,486)	-20.37%	22,528,070	27,504,319	(4,976,249)	-18.09%
TOTAL CARGO		15,163,294	18,719,102	(3,555,808)	-19.00%	45,815,660	54,668,910	(8,853,250)	-16.19%
CUSTOMS: Entries									
		14	15	(1)	-6.67%	42	36	6	16.67%

MONTHLY AIRCRAFT ACTIVITY

The FEDERAL AVIATION ADMINISTRATION
AIR TRAFFIC CONTROL TOWER at LVIA recorded
the following aircraft take-offs and landings for the month:

MARCH

YEAR-TO-DATE

		2018	2017	Increase (Decrease)	Percent Difference	2018	2017	Increase (Decrease)	Percent Difference
Major Airlines		826	856	(30)	-3.50%	2,360	2,366	(6)	-0.25%
Regional Airlines		668	730	(62)	-8.49%	2,006	2,160	(154)	-7.13%
General Aviation		1,762	1,683	79	4.69%	4,990	5,264	(274)	-5.21%
Military		29	52	(23)	-44.23%	140	134	6	4.48%
Total Itinerant		3,285	3,321	(36)	-1.08%	9,496	9,924	(428)	-4.31%
Total Local		2,090	2,642	(552)	-20.89%	5,900	7,560	(1,660)	-21.96%
TOTAL OPERATIONS		5,375	5,963	(588)	-9.86%	15,396	17,484	(2,088)	-11.94%

