

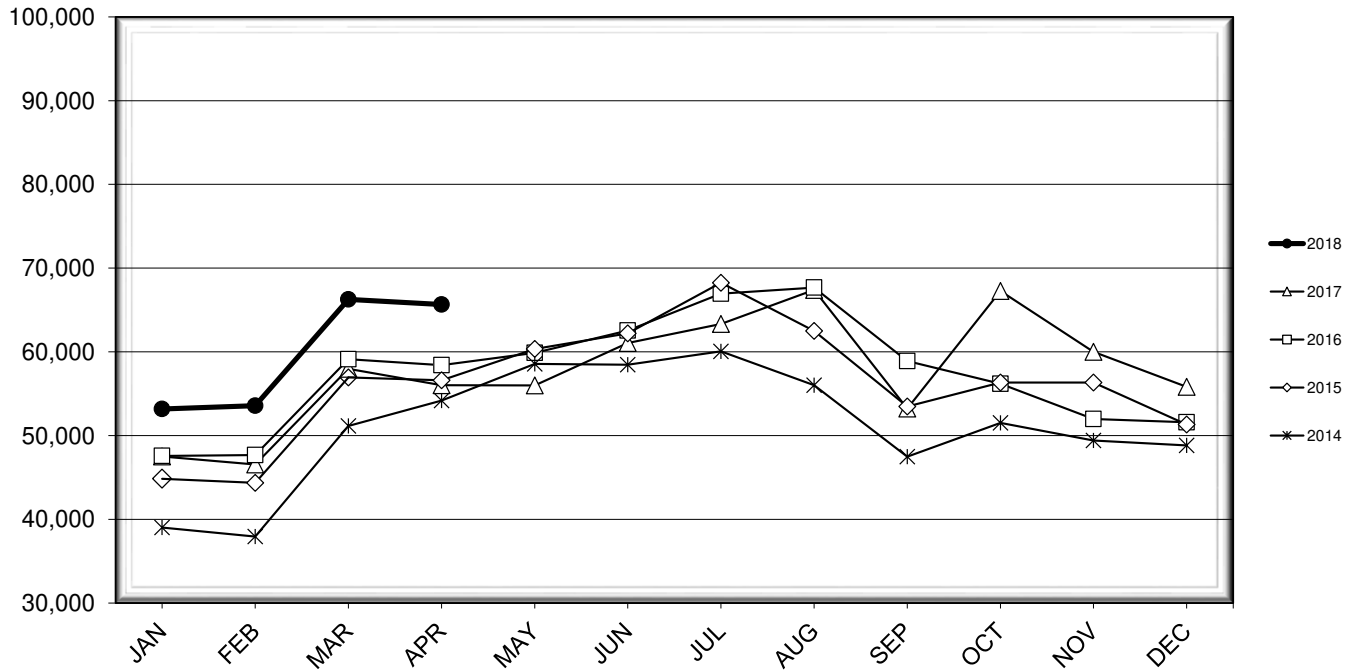


LEHIGH VALLEY INTERNATIONAL AIRPORT MONTHLY TRAFFIC REPORT APRIL 2018

TOTAL PASSENGER TRAFFIC COMPARISON

Month	2018	Percent Difference	2017	2016	2015	2014
January	53,177	11.92%	47,515	47,570	44,848	39,020
February	53,564	15.07%	46,549	47,675	44,358	37,943
March	66,267	14.30%	57,977	59,121	56,939	51,161
April	65,648	17.20%	56,012	58,420	56,606	54,173
May			55,996	59,880	60,335	58,567
June			61,044	62,542	62,200	58,471
July			63,336	66,953	68,256	60,064
August			67,402	67,673	62,497	56,021
September			53,228	58,906	53,474	47,471
October			67,261	56,198	56,335	51,509
November			60,008	51,971	56,326	49,414
December			55,826	51,596	51,331	48,836

COMPARISON OF TOTAL PASSENGERS



**LEHIGH VALLEY INTERNATIONAL AIRPORT (ABE)
MONTHLY TRAFFIC REPORT
APRIL 2018**

		APRIL				YEAR-TO-DATE			
		2018	2017	Increase (Decrease)	Percent Difference	2018	2017	Increase (Decrease)	Percent Difference
MAJOR AIRLINES:									
Passengers									
Enplaned		2,462	2,092	370	17.69%	11,461	9,994	1,467	14.68%
Deplaned		2,652	2,210	442	20.00%	10,828	9,228	1,600	17.34%
Sub-total		5,114	4,302	812	18.87%	22,289	19,222	3,067	15.96%
REGIONAL AIRLINES:									
Passengers									
Enplaned		30,268	25,896	4,372	16.88%	109,150	94,633	14,517	15.34%
Deplaned		30,266	25,814	4,452	17.25%	107,217	94,198	13,019	13.82%
Sub-total		60,534	51,710	8,824	17.06%	216,367	188,831	27,536	14.58%
TOTAL PASSENGERS		65,648	56,012	9,636	17.20%	238,656	208,053	30,603	14.71%
CARGO:									
Enplaned		8,268,464	10,307,086	(2,038,622)	-19.78%	31,556,054	37,471,677	(5,915,623)	-15.79%
Deplaned		7,891,196	9,926,772	(2,035,576)	-20.51%	30,419,266	37,431,091	(7,011,825)	-18.73%
TOTAL CARGO		16,159,660	20,233,858	(4,074,198)	-20.14%	61,975,320	74,902,768	(12,927,448)	-17.26%
CUSTOMS: Entries									
		8	11	(3)	-27.27%	50	47	3	6.38%

MONTHLY AIRCRAFT ACTIVITY

The FEDERAL AVIATION ADMINISTRATION
AIR TRAFFIC CONTROL TOWER at LVIA recorded
the following aircraft take-offs and landings for the month:

		APRIL				YEAR-TO-DATE			
		2018	2017	Increase (Decrease)	Percent Difference	2018	2017	Increase (Decrease)	Percent Difference
Major Airlines		888	891	(3)	-0.34%	3,248	3,257	(9)	-0.28%
Regional Airlines		688	779	(91)	-11.68%	2,694	2,939	(245)	-8.34%
General Aviation		2,192	2,311	(119)	-5.15%	7,182	7,575	(393)	-5.19%
Military		71	61	10	16.39%	211	195	16	8.21%
Total Itinerant		3,839	4,042	(203)	-5.02%	13,335	13,966	(631)	-4.52%
Total Local		2,574	3,385	(811)	-23.96%	8,474	10,945	(2,471)	-22.58%
TOTAL OPERATIONS		6,413	7,427	(1,014)	-13.65%	21,809	24,911	(3,102)	-12.45%

LEHIGH VALLEY INTERNATIONAL AIRPORT (ABE)
MONTHLY TRAFFIC REPORT
AIRLINE PASSENGER STATISTICS

AIRLINE / OPERATOR	APRIL ENPLANEMENT DATA				APRIL DEPLANEMENT DATA			
	2018	2017	Difference	% Change	2018	2017	Difference	% Change
Allegiant Air	12,715	10,632	2,083	19.59%	12,869	10,902	1,967	18.04%
Endeavor Airlines	3,455	910	2,545	279.67%	3,728	738	2,990	405.15%
Express Jet	193	3,096	(2,903)	-93.77%	160	3,350	(3,190)	-95.22%
Skywest	2,318	2,125	193	9.08%	2,273	2,056	217	10.55%
Delta Connection Subtotal	5,966	6,131	(165)	-2.69%	6,161	6,144	17	0.28%
Delta Air Lines Mainline	2,462	2,092	370	17.69%	2,652	2,210	442	20.00%
Delta Airlines Total	8,428	8,223	205	2.49%	8,813	8,354	459	5.49%
Express Jet	2,174	-	2,174	N/A	2,410	39	2,371	6079.49%
Skywest	56	-	56	N/A	78	-	78	N/A
Trans States Airlines	29	2,396	(2,367)	-98.79%	43	2,096	(2,053)	-97.95%
Air Wisconsin	93	-	93	N/A	90	-	90	N/A
United Shuttle	1,238	972	266	27.37%	1,083	884	199	22.51%
United Airlines Total	3,590	3,368	222	6.59%	3,704	3,019	685	22.69%
Air Wisconsin	-	1,729	(1,729)	-100.00%	-	1,251	(1,251)	-100.00%
PSA Airlines	5,190	3,410	1,780	52.20%	5,337	3,731	1,606	43.04%
Piedmont Airlines	2,807	510	2,297	450.39%	2,195	653	1,542	236.14%
American Airlines Total	7,997	5,649	2,348	41.56%	7,532	5,635	1,897	33.66%
Charters	-	116	(116)	-100.00%	-	114	(114)	-100.00%

MONTHLY TOTALS	APRIL ENPLANEMENT DATA				APRIL DEPLANEMENT DATA			
	2018	2017	Difference	% Change	2018	2017	Difference	% Change
	32,730	27,988	4,742	16.94%	32,918	28,024	4,894	17.46%

TOTAL PASSENGERS FOR APRIL 2018: 65,648
PERCENT CHANGE VERSUS APRIL 2017: +17.20%