

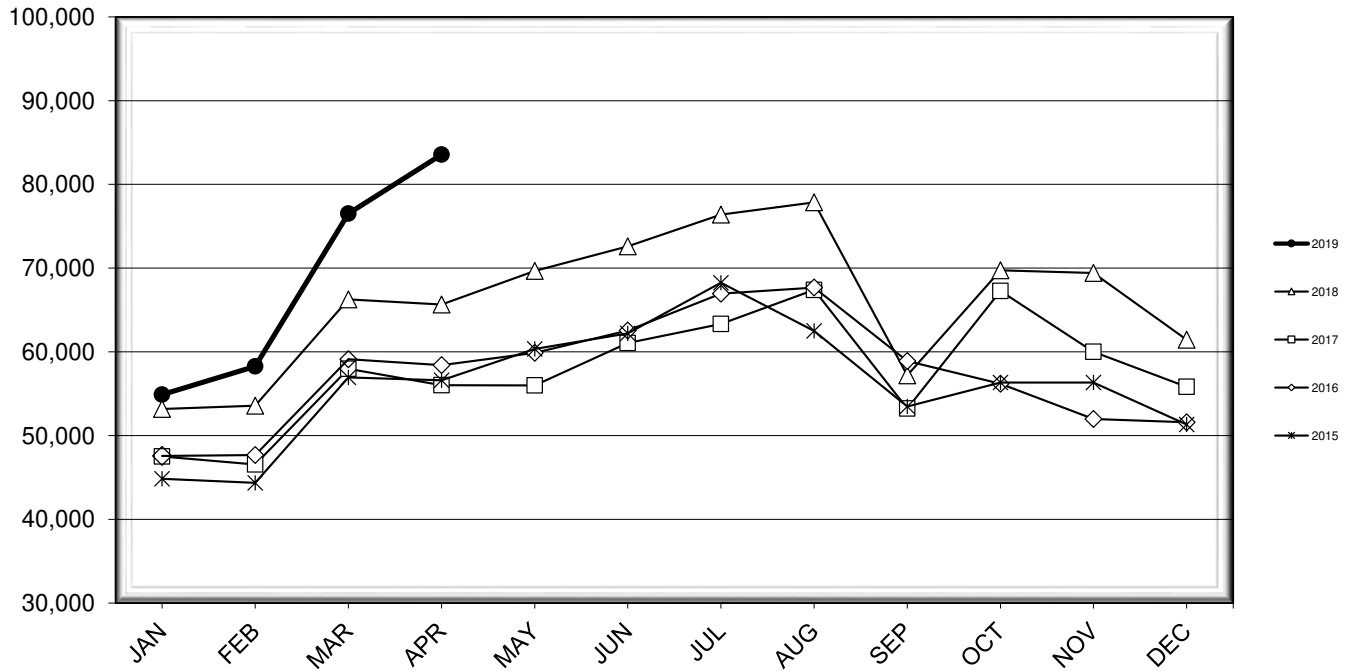


LEHIGH VALLEY INTERNATIONAL AIRPORT MONTHLY TRAFFIC REPORT APRIL 2019

TOTAL PASSENGER TRAFFIC COMPARISON

Month	2019	Percent Difference	2018	2017	2016	2015
January	54,895	3.23%	53,177	47,515	47,570	44,848
February	58,276	8.80%	53,564	46,549	47,675	44,358
March	76,512	15.46%	66,267	57,977	59,121	56,939
April	83,560	27.28%	65,648	56,012	58,420	56,606
May			69,675	55,996	59,880	60,335
June			72,600	61,044	62,542	62,200
July			76,394	63,336	66,953	68,256
August			77,851	67,402	67,673	62,497
September			57,195	53,228	58,906	53,474
October			69,736	67,261	56,198	56,335
November			69,414	60,008	51,971	56,326
December			61,453	55,826	51,596	51,331

COMPARISON OF TOTAL PASSENGERS



**LEHIGH VALLEY INTERNATIONAL AIRPORT (ABE)
MONTHLY TRAFFIC REPORT
APRIL 2019**

		APRIL				YEAR-TO-DATE			
		2019	2018	Increase (Decrease)	Percent Difference	2019	2018	Increase (Decrease)	Percent Difference
MAJOR AIRLINES:									
Passengers									
Enplaned		2,899	2,462	437	17.75%	11,127	11,461	(334)	-2.91%
Deplaned		2,733	2,652	81	3.05%	10,504	10,828	(324)	-2.99%
Sub-total		5,632	5,114	518	10.13%	21,631	22,289	(658)	-2.95%
REGIONAL AIRLINES:									
Passengers									
Enplaned		38,786	30,268	8,518	28.14%	126,889	109,150	17,739	16.25%
Deplaned		39,142	30,266	8,876	29.33%	124,723	107,217	17,506	16.33%
Sub-total		77,928	60,534	17,394	28.73%	251,612	216,367	35,245	16.29%
TOTAL PASSENGERS		83,560	65,648	17,912	27.28%	273,243	238,656	34,587	14.49%
CARGO:									
Enplaned		8,131,818	8,268,464	(136,646)	-1.65%	32,895,164	31,556,054	1,339,110	4.24%
Deplaned		5,441,180	7,891,196	(2,450,016)	-31.05%	24,241,045	30,419,266	(6,178,221)	-20.31%
TOTAL CARGO		13,572,998	16,159,660	(2,586,662)	-16.01%	57,136,209	61,975,320	(4,839,111)	-7.81%
CUSTOMS: Entries									
		11	8	3	37.50%	61	50	11	22.00%

MONTHLY AIRCRAFT ACTIVITY

The FEDERAL AVIATION ADMINISTRATION
AIR TRAFFIC CONTROL TOWER at LVIA recorded
the following aircraft take-offs and landings for the month:

		APRIL				YEAR-TO-DATE			
		2019	2018	Increase (Decrease)	Percent Difference	2019	2018	Increase (Decrease)	Percent Difference
Major Airlines		928	888	40	4.50%	3,433	3,248	185	5.70%
Regional Airlines		917	688	229	33.28%	2,933	2,694	239	8.87%
General Aviation		2,276	2,192	84	3.83%	8,246	7,182	1,064	14.81%
Military		55	71	(16)	-22.54%	151	211	(60)	-28.44%
Total Itinerant		4,176	3,839	337	8.78%	14,763	13,335	1,428	10.71%
Total Local		3,543	2,574	969	37.65%	10,850	8,474	2,376	28.04%
TOTAL OPERATIONS		7,719	6,413	1,306	20.36%	25,613	21,809	3,804	17.44%

**LEHIGH VALLEY INTERNATIONAL AIRPORT (ABE)
MONTHLY TRAFFIC REPORT
AIRLINE PASSENGER STATISTICS**

AIRLINE / OPERATOR	APRIL ENPLANEMENT DATA				APRIL DEPLANEMENT DATA			
	2019	2018	Difference	% Change	2019	2018	Difference	% Change
Allegiant Air	15,734	12,715	3,019	23.74%	16,239	12,869	3,370	26.19%
Endeavor Airlines	3,635	3,455	180	5.21%	3,802	3,728	74	1.98%
Express Jet	-	193	(193)	-100.00%	-	160	(160)	-100.00%
Skywest	3,653	2,318	1,335	57.59%	3,454	2,273	1,181	51.96%
Delta Connection Subtotal	7,288	5,966	1,322	22.16%	7,256	6,161	1,095	17.77%
Delta Air Lines Mainline	2,899	2,462	437	17.75%	2,732	2,652	80	3.02%
Delta Airlines Total	10,187	8,428	1,759	20.87%	9,988	8,813	1,175	13.33%
Air Wisconsin	90	93	(3)	-3.23%	161	90	71	78.89%
Express Jet	-	2,174	(2,174)	-100.00%	-	2,410	(2,410)	-100.00%
Skywest	2,651	56	2,595	4633.93%	2,622	78	2,544	3261.54%
Trans States	-	29	(29)	-100.00%	-	43	(43)	-100.00%
United Shuttle	1,085	1,238	(153)	-12.36%	998	1,083	(85)	-7.85%
United Express Subtotal	3,826	3,590	236	6.57%	3,781	3,704	77	2.08%
United Mainline	-	-	0	N/A	1	-	1	N/A
United Airlines Total	3,826	3,590	236	6.57%	3,782	3,704	78	2.11%
Envoy Air	2,185	-	2,185	N/A	2,264	-	2,264	N/A
PSA Airlines	5,489	5,190	299	5.76%	5,739	5,337	402	7.53%
Piedmont Airlines	4,264	2,807	1,457	51.91%	3,863	2,195	1,668	75.99%
American Airlines Total	11,938	7,997	3,941	49.28%	11,866	7,532	4,334	57.54%
Charters	-	-	0	N/A	-	-	0	N/A
	APRIL ENPLANEMENT DATA				APRIL DEPLANEMENT DATA			
MONTHLY TOTALS	41,685	32,730	8,955	27.36%	41,875	32,918	8,957	27.21%

TOTAL PASSENGERS FOR APRIL 2019: 83,560
PERCENT CHANGE VERSUS APRIL 2018: +27.28%