

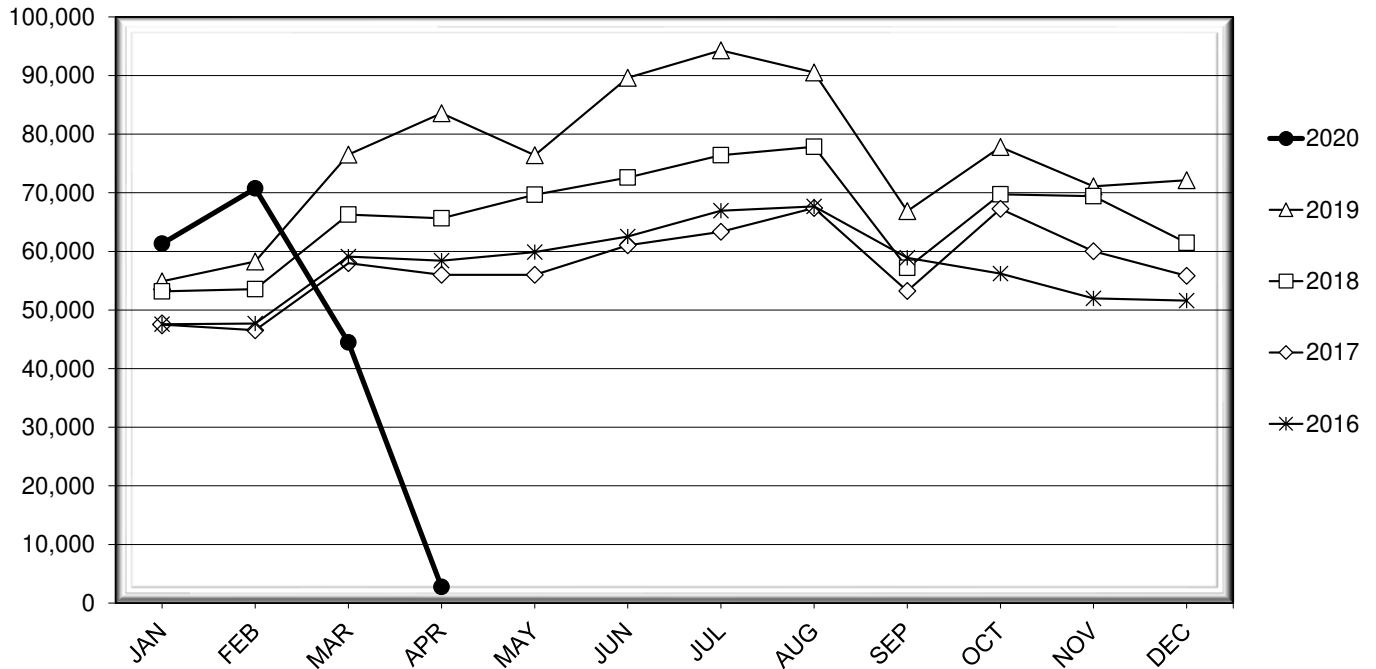


# LEHIGH VALLEY INTERNATIONAL AIRPORT MONTHLY TRAFFIC REPORT APRIL 2020

## TOTAL PASSENGER TRAFFIC COMPARISON

Month	2020	Percent Difference	2019	2018	2017	2016
January	61,309	11.68%	54,895	53,177	47,515	47,570
February	70,732	21.37%	58,276	53,564	46,549	47,675
March **	44,478	-41.87%	76,512	66,267	57,977	59,121
April	2,749	-96.71%	83,560	65,648	56,012	58,420
May			76,400	69,675	55,996	59,880
June			89,609	72,600	61,044	62,542
July			94,298	76,394	63,336	66,953
August			90,524	77,851	67,402	67,673
September			66,854	57,195	53,228	58,906
October			77,794	69,736	67,261	56,198
November			71,098	69,414	60,008	51,971
December			72,150	61,453	55,826	51,596

## COMPARISON OF TOTAL PASSENGERS



\*\* COVID-19 PANDEMIC

**LEHIGH VALLEY INTERNATIONAL AIRPORT (ABE)  
MONTHLY TRAFFIC REPORT  
APRIL 2020**

		<b>APRIL</b>				<b>YEAR-TO-DATE</b>			
		<i>2020</i>	<i>2019</i>	<i>Increase (Decrease)</i>	<i>Percent Difference</i>	<i>2020</i>	<i>2019</i>	<i>Increase (Decrease)</i>	<i>Percent Difference</i>
<b>MAJOR AIRLINES:</b>									
Passengers									
Enplaned		0	2,899	(2,899)	-100.00%	5,713	11,127	(5,414)	-48.66%
Deplaned		0	2,733	(2,733)	-100.00%	5,781	10,504	(4,723)	-44.96%
Sub-total		0	5,632	(5,632)	-100.00%	11,494	21,631	(10,137)	-46.86%
<b>REGIONAL AIRLINES:</b>									
Passengers									
Enplaned		1,284	38,786	(37,502)	-96.69%	84,141	126,889	(42,748)	-33.69%
Deplaned		1,465	39,142	(37,677)	-96.26%	83,633	124,723	(41,090)	-32.95%
Sub-total		2,749	77,928	(75,179)	-96.47%	167,774	251,612	(83,838)	-33.32%
<b>TOTAL PASSENGERS</b>		<b>2,749</b>	<b>83,560</b>	<b>(80,811)</b>	<b>-96.71%</b>	<b>179,268</b>	<b>273,243</b>	<b>(93,975)</b>	<b>-34.39%</b>
<b>CARGO:</b>									
Enplaned		9,403,196	8,131,818	1,271,378	15.63%	36,253,914	32,895,164	3,358,750	10.21%
Deplaned		11,586,653	5,441,180	6,145,473	112.94%	38,221,832	24,241,045	13,980,787	57.67%
<b>TOTAL CARGO</b>		<b>20,989,849</b>	<b>13,572,998</b>	<b>7,416,851</b>	<b>54.64%</b>	<b>74,475,746</b>	<b>57,136,209</b>	<b>17,339,537</b>	<b>30.35%</b>
<b>CUSTOMS:</b>									
Entries		1	11	(10)	-90.91%	23	61	(38)	-62.30%

**MONTHLY AIRCRAFT ACTIVITY**

The FEDERAL AVIATION ADMINISTRATION  
AIR TRAFFIC CONTROL TOWER at LVIA recorded  
the following aircraft take-offs and landings for the month:

		<b>APRIL</b>				<b>YEAR-TO-DATE</b>			
		<i>2020</i>	<i>2019</i>	<i>Increase (Decrease)</i>	<i>Percent Difference</i>	<i>2020</i>	<i>2019</i>	<i>Increase (Decrease)</i>	<i>Percent Difference</i>
Major Airlines		508	928	(420)	-45.26%	3,642	3,433	209	6.09%
Regional Airlines		313	917	(604)	-65.87%	2,150	2,933	(783)	-26.70%
General Aviation		934	2,276	(1,342)	-58.96%	6,914	8,246	(1,332)	-16.15%
Military		13	55	(42)	-76.36%	115	151	(36)	-23.84%
Total Itinerant		1,768	4,176	(2,408)	-57.66%	12,821	14,763	(1,942)	-13.15%
Total Local		869	3,543	(2,674)	-75.47%	7,254	10,850	(3,596)	-33.14%
<b>TOTAL OPERATIONS</b>		<b>2,637</b>	<b>7,719</b>	<b>(5,082)</b>	<b>-65.84%</b>	<b>20,075</b>	<b>25,613</b>	<b>(5,538)</b>	<b>-21.62%</b>

**LEHIGH VALLEY INTERNATIONAL AIRPORT (ABE)  
MONTHLY TRAFFIC REPORT  
AIRLINE PASSENGER STATISTICS**

AIRLINE / OPERATOR	APRIL ENPLANEMENT DATA				APRIL DEPLANEMENT DATA			
	2020	2019	Difference	% Change	2020	2019	Difference	% Change
Allegiant Air	255	15,734	(15,479)	-98.38%	366	16,239	(15,873)	-97.75%
Envoy	202	2,185	(1,983)	-90.76%	223	2,264	(2,041)	-90.15%
Piedmont	96	4,264	(4,168)	-97.75%	82	3,863	(3,781)	-97.88%
PSA	395	5,489	(5,094)	-92.80%	394	5,739	(5,345)	-93.13%
<b>American Airlines Total</b>	<b>693</b>	<b>11,938</b>	<b>(11,245)</b>	<b>-94.20%</b>	<b>699</b>	<b>11,866</b>	<b>(11,167)</b>	<b>-94.11%</b>
Endeavor	-	3,635	(3,635)	-100.00%	-	3,802	(3,802)	-100.00%
Skywest	209	3,653	(3,444)	-94.28%	277	3,454	(3,177)	-91.98%
Delta Connection Subtotal	209	7,288	(7,079)	-97.13%	277	7,256	(6,979)	-96.18%
Delta Air Lines Mainline	-	2,899	(2,899)	-100.00%	-	2,732	(2,732)	-100.00%
<b>Delta Air Lines Total</b>	<b>209</b>	<b>10,187</b>	<b>(9,978)</b>	<b>-97.95%</b>	<b>277</b>	<b>9,988</b>	<b>(9,711)</b>	<b>-97.23%</b>
Air Wisconsin	-	90	(90)	-100.00%	-	161	(161)	-100.00%
GoJet	124	-	124	N/A	123	-	123	N/A
Skywest	-	2,651	(2,651)	-100.00%	-	2,622	(2,622)	-100.00%
United Shuttle	3	1,085	(1,082)	-99.72%	-	998	(998)	-100.00%
United Express Subtotal	127	3,826	(3,699)	-96.68%	123	3,781	(3,658)	-96.75%
United Airlines Mainline	-	-	0	N/A	-	1	(1)	-100.00%
<b>United Airlines Total</b>	<b>127</b>	<b>3,826</b>	<b>(3,699)</b>	<b>-96.68%</b>	<b>123</b>	<b>3,782</b>	<b>(3,659)</b>	<b>-96.75%</b>
Charters	-	-	0	N/A	-	-	0	N/A

MONTHLY TOTALS	APRIL ENPLANEMENT DATA				APRIL DEPLANEMENT DATA			
	2020	2019	Difference	% Change	2020	2019	Difference	% Change
	<b>1,284</b>	<b>41,685</b>	<b>(40,401)</b>	<b>-96.92%</b>	<b>1,465</b>	<b>41,875</b>	<b>(40,410)</b>	<b>-96.50%</b>

**TOTAL PASSENGERS FOR APRIL 2020: 2,749**  
**PERCENT CHANGE VERSUS APRIL 2019: - 96.71%**