

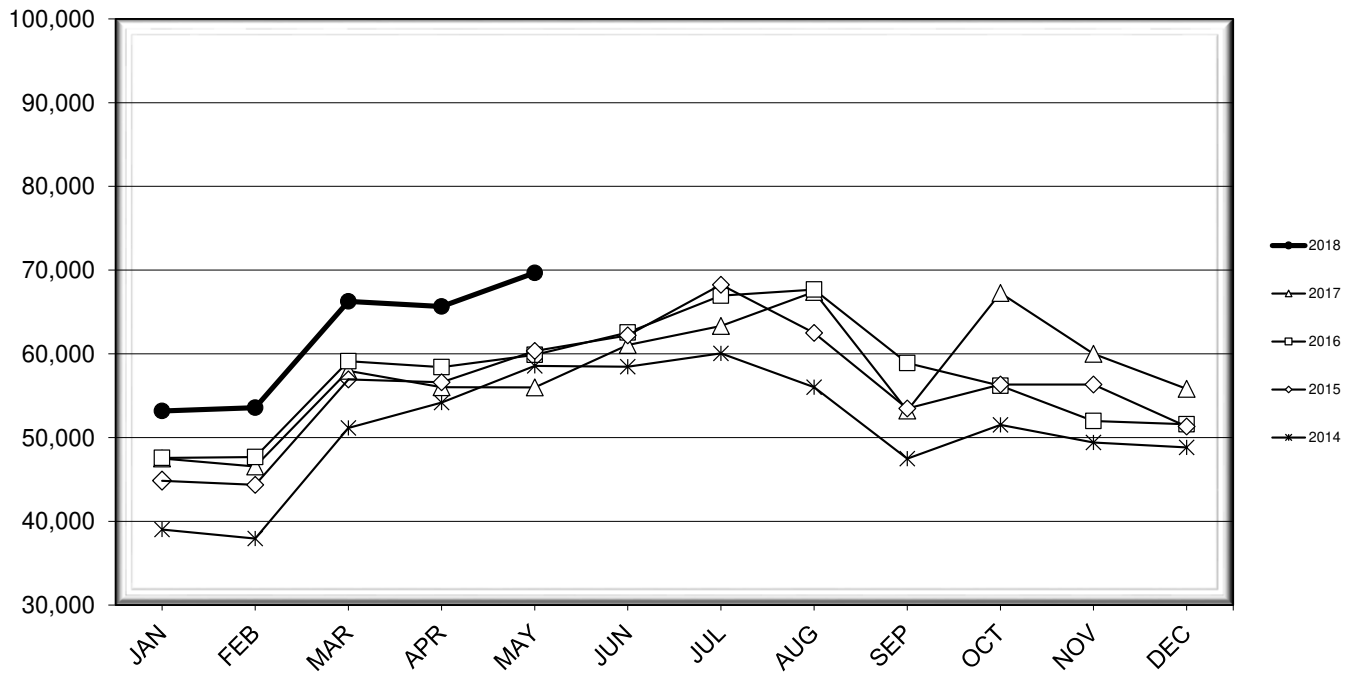


LEHIGH VALLEY INTERNATIONAL AIRPORT MONTHLY TRAFFIC REPORT MAY 2018

TOTAL PASSENGER TRAFFIC COMPARISON

Month	2018	Percent Difference	2017	2016	2015	2014
January	53,177	11.92%	47,515	47,570	44,848	39,020
February	53,564	15.07%	46,549	47,675	44,358	37,943
March	66,267	14.30%	57,977	59,121	56,939	51,161
April	65,648	17.20%	56,012	58,420	56,606	54,173
May	69,675	24.43%	55,996	59,880	60,335	58,567
June			61,044	62,542	62,200	58,471
July			63,336	66,953	68,256	60,064
August			67,402	67,673	62,497	56,021
September			53,228	58,906	53,474	47,471
October			67,261	56,198	56,335	51,509
November			60,008	51,971	56,326	49,414
December			55,826	51,596	51,331	48,836

COMPARISON OF TOTAL PASSENGERS



**LEHIGH VALLEY INTERNATIONAL AIRPORT (ABE)
MONTHLY TRAFFIC REPORT
MAY 2018**

		MAY				YEAR-TO-DATE			
		2018	2017	Increase (Decrease)	Percent Difference	2018	2017	Increase (Decrease)	Percent Difference
MAJOR AIRLINES:									
Passengers									
Enplaned		2,744	2,170	574	26.45%	14,205	12,164	2,041	16.78%
Deplaned		2,850	2,238	612	27.35%	13,678	11,466	2,212	19.29%
Sub-total		5,594	4,408	1,186	26.91%	27,883	23,630	4,253	18.00%
REGIONAL AIRLINES:									
Passengers									
Enplaned		31,832	25,764	6,068	23.55%	140,982	120,397	20,585	17.10%
Deplaned		32,249	25,824	6,425	24.88%	139,466	120,022	19,444	16.20%
Sub-total		64,081	51,588	12,493	24.22%	280,448	240,419	40,029	16.65%
TOTAL PASSENGERS		69,675	55,996	13,679	24.43%	308,331	264,049	44,282	16.77%
CARGO:									
Enplaned		9,081,103	6,400,993	2,680,110	41.87%	40,637,157	43,872,670	(3,235,513)	-7.37%
Deplaned		8,880,473	6,551,954	2,328,519	35.54%	39,299,739	43,983,045	(4,683,306)	-10.65%
TOTAL CARGO		17,961,576	12,952,947	5,008,629	38.67%	79,936,896	87,855,715	(7,918,819)	-9.01%
CUSTOMS: Entries									
		18	17	1	5.88%	68	64	4	6.25%

MONTHLY AIRCRAFT ACTIVITY

The FEDERAL AVIATION ADMINISTRATION
AIR TRAFFIC CONTROL TOWER at LVIA recorded
the following aircraft take-offs and landings for the month:

		MAY				YEAR-TO-DATE			
		2018	2017	Increase (Decrease)	Percent Difference	2018	2017	Increase (Decrease)	Percent Difference
Major Airlines		952	817	135	16.52%	4,200	4,074	126	3.09%
Regional Airlines		760	865	(105)	-12.14%	3,454	3,804	(350)	-9.20%
General Aviation		2,405	2,156	249	11.55%	9,587	9,731	(144)	-1.48%
Military		56	50	6	12.00%	267	245	22	8.98%
Total Itinerant		4,173	3,888	285	7.33%	17,508	17,854	(346)	-1.94%
Total Local		2,572	3,024	(452)	-14.95%	11,046	13,969	(2,923)	-20.92%
TOTAL OPERATIONS		6,745	6,912	(167)	-2.42%	28,554	31,823	(3,269)	-10.27%

**LEHIGH VALLEY INTERNATIONAL AIRPORT (ABE)
MONTHLY TRAFFIC REPORT
AIRLINE PASSENGER STATISTICS**

AIRLINE / OPERATOR	MAY ENPLANEMENT DATA				MAY DEPLANEMENT DATA			
	2018	2017	Difference	% Change	2018	2017	Difference	% Change
Allegiant Air	12,801	10,948	1,853	16.93%	13,210	10,998	2,212	20.11%
Endeavor Airlines	3,888	542	3,346	617.34%	4,143	372	3,771	1013.71%
Express Jet	-	3,180	(3,180)	-100.00%	-	3,479	(3,479)	-100.00%
Skywest	2,361	2,493	(132)	-5.29%	2,385	2,466	(81)	-3.28%
Delta Connection Subtotal	6,249	6,215	34	0.55%	6,528	6,317	211	3.34%
Delta Airlines Mainline	2,744	2,170	574	26.45%	2,850	2,238	612	27.35%
Delta Airlines Total	8,993	8,385	608	7.25%	9,378	8,555	823	9.62%
Express Jet	2,236	111	2,125	1914.41%	2,308	245	2,063	842.04%
Skywest	31	-	31	N/A	25	-	25	N/A
Trans States Airlines	171	1,963	(1,792)	-91.29%	166	2,106	(1,940)	-92.12%
Air Wisconsin	115	-	115	N/A	79	-	79	N/A
United Shuttle	1,280	1,080	200	18.52%	1,120	918	202	22.00%
United Airlines Total	3,833	3,154	679	21.53%	3,698	3,269	429	13.12%
Air Wisconsin	-	1,750	(1,750)	-100.00%	-	1,258	(1,258)	-100.00%
PSA Airlines	5,733	3,188	2,545	79.83%	6,339	3,355	2,984	88.94%
Piedmont Airlines	3,216	509	2,707	531.83%	2,468	627	1,841	293.62%
Republic Airlines	-	-	0	N/A	6	-	6	N/A
American Airlines Total	8,949	5,447	3,502	64.29%	8,813	5,240	3,573	68.19%
Charters	-	-	0	N/A	-	-	0	N/A

MONTHLY TOTALS	MAY ENPLANEMENT DATA				MAY DEPLANEMENT DATA			
	2018	2017	Difference	% Change	2018	2017	Difference	% Change
	34,576	27,934	6,642	23.78%	35,099	28,062	7,037	25.08%

TOTAL PASSENGERS FOR MAY 2018: 69,675
PERCENT CHANGE VERSUS MAY 2017: +24.43%