

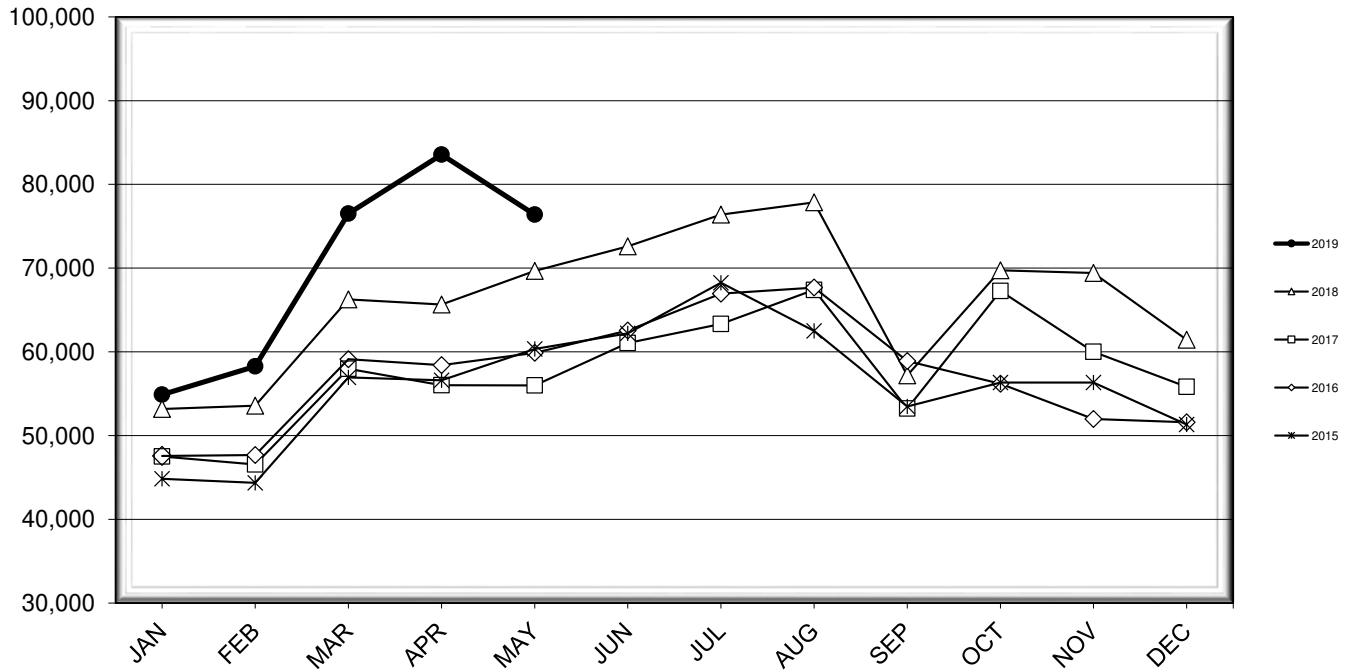


LEHIGH VALLEY INTERNATIONAL AIRPORT MONTHLY TRAFFIC REPORT MAY 2019

TOTAL PASSENGER TRAFFIC COMPARISON

Month	2019	Percent Difference	2018	2017	2016	2015
January	54,895	3.23%	53,177	47,515	47,570	44,848
February	58,276	8.80%	53,564	46,549	47,675	44,358
March	76,512	15.46%	66,267	57,977	59,121	56,939
April	83,560	27.28%	65,648	56,012	58,420	56,606
May	76,400	9.65%	69,675	55,996	59,880	60,335
June			72,600	61,044	62,542	62,200
July			76,394	63,336	66,953	68,256
August			77,851	67,402	67,673	62,497
September			57,195	53,228	58,906	53,474
October			69,736	67,261	56,198	56,335
November			69,414	60,008	51,971	56,326
December			61,453	55,826	51,596	51,331

COMPARISON OF TOTAL PASSENGERS



**LEHIGH VALLEY INTERNATIONAL AIRPORT (ABE)
MONTHLY TRAFFIC REPORT
MAY 2019**

MAY					YEAR-TO-DATE				
		2019	2018	Increase (Decrease)	Percent Difference	2019	2018	Increase (Decrease)	Percent Difference
MAJOR AIRLINES:									
Passengers									
Enplaned		731	2,744	(2,013)	-73.36%	11,858	14,205	(2,347)	-16.52%
Deplaned		632	2,850	(2,218)	-77.82%	11,136	13,678	(2,542)	-18.58%
Sub-total		1,363	5,594	(4,231)	-75.63%	22,994	27,883	(4,889)	-17.53%
REGIONAL AIRLINES:									
Passengers									
Enplaned		37,348	31,832	5,516	17.33%	164,237	140,982	23,255	16.50%
Deplaned		37,689	32,249	5,440	16.87%	162,412	139,466	22,946	16.45%
Sub-total		75,037	64,081	10,956	17.10%	326,649	280,448	46,201	16.47%
TOTAL PASSENGERS		76,400	69,675	6,725	9.65%	349,643	308,331	41,312	13.40%
CARGO:									
Enplaned		7,399,740	9,081,103	(1,681,363)	-18.51%	40,294,904	40,637,157	(342,253)	-0.84%
Deplaned		6,620,912	8,880,473	(2,259,561)	-25.44%	30,861,957	39,299,739	(8,437,782)	-21.47%
TOTAL CARGO		14,020,652	17,961,576	(3,940,924)	-21.94%	71,156,861	79,936,896	(8,780,035)	-10.98%
CUSTOMS: Entries									
		15	18	(3)	-16.67%	76	68	8	11.76%

MONTHLY AIRCRAFT ACTIVITY

The FEDERAL AVIATION ADMINISTRATION
AIR TRAFFIC CONTROL TOWER at LVIA recorded
the following aircraft take-offs and landings for the month:

MAY					YEAR-TO-DATE				
		2019	2018	Increase (Decrease)	Percent Difference	2019	2018	Increase (Decrease)	Percent Difference
Major Airlines		976	952	24	2.52%	4,409	4,200	209	4.98%
Regional Airlines		756	760	(4)	-0.53%	3,689	3,454	235	6.80%
General Aviation		2,588	2,405	183	7.61%	10,834	9,587	1,247	13.01%
Military		34	56	(22)	-39.29%	185	267	(82)	-30.71%
Total Itinerant		4,354	4,173	181	4.34%	19,117	17,508	1,609	9.19%
Total Local		3,365	2,572	793	30.83%	14,215	11,046	3,169	28.69%
TOTAL OPERATIONS		7,719	6,745	974	14.44%	33,332	28,554	4,778	16.73%

**LEHIGH VALLEY INTERNATIONAL AIRPORT (ABE)
MONTHLY TRAFFIC REPORT
AIRLINE PASSENGER STATISTICS**

AIRLINE / OPERATOR	MAY ENPLANEMENT DATA				MAY DEPLANEMENT DATA			
	<i>2019</i>	<i>2018</i>	<i>Difference</i>	<i>% Change</i>	<i>2019</i>	<i>2018</i>	<i>Difference</i>	<i>% Change</i>
Allegiant Air	14,043	12,801	1,242	9.70%	14,458	13,210	1,248	9.45%
Endeavor Airlines	4,900	3,888	1,012	26.03%	5,085	4,143	942	22.74%
Skywest	3,410	2,361	1,049	44.43%	3,381	2,385	996	41.76%
Delta Connection Subtotal	8,310	6,249	2,061	32.98%	8,466	6,528	1,938	29.69%
Delta Air Lines Mainline	731	2,744	(2,013)	-73.36%	632	2,850	(2,218)	-77.82%
Delta Airlines Total	9,041	8,993	48	0.53%	9,098	9,378	(280)	-2.99%
Air Wisconsin	2,274	115	2,159	1877.39%	2,310	79	2,231	2824.05%
Express Jet	-	2,236	(2,236)	-100.00%	-	2,308	(2,308)	-100.00%
Skywest	-	31	(31)	-100.00%	-	25	(25)	-100.00%
Trans States	-	171	(171)	-100.00%	-	166	(166)	-100.00%
United Shuttle	1,577	1,280	297	23.20%	1,333	1,120	213	19.02%
United Airlines Total	3,851	3,833	18	0.47%	3,643	3,698	(55)	-1.49%
Envoy	2,578	-	2,578	N/A	2,733	-	2,733	N/A
Republic	-	-	0	N/A	-	6	(6)	-100.00%
PSA Airlines	5,330	5,733	(403)	-7.03%	5,415	6,339	(924)	-14.58%
Piedmont Airlines	3,094	3,216	(122)	-3.79%	2,832	2,468	364	14.75%
American Airlines Total	11,002	8,949	2,053	22.94%	10,980	8,813	2,167	24.59%
Charters	142	-	142	N/A	142	-	142	N/A
MONTHLY TOTALS	38,079	34,576	3,503	10.13%	38,321	35,099	3,222	9.18%

**TOTAL PASSENGERS FOR MAY 2019: 76,400
PERCENT CHANGE VERSUS MAY 2018: +9.65%**