

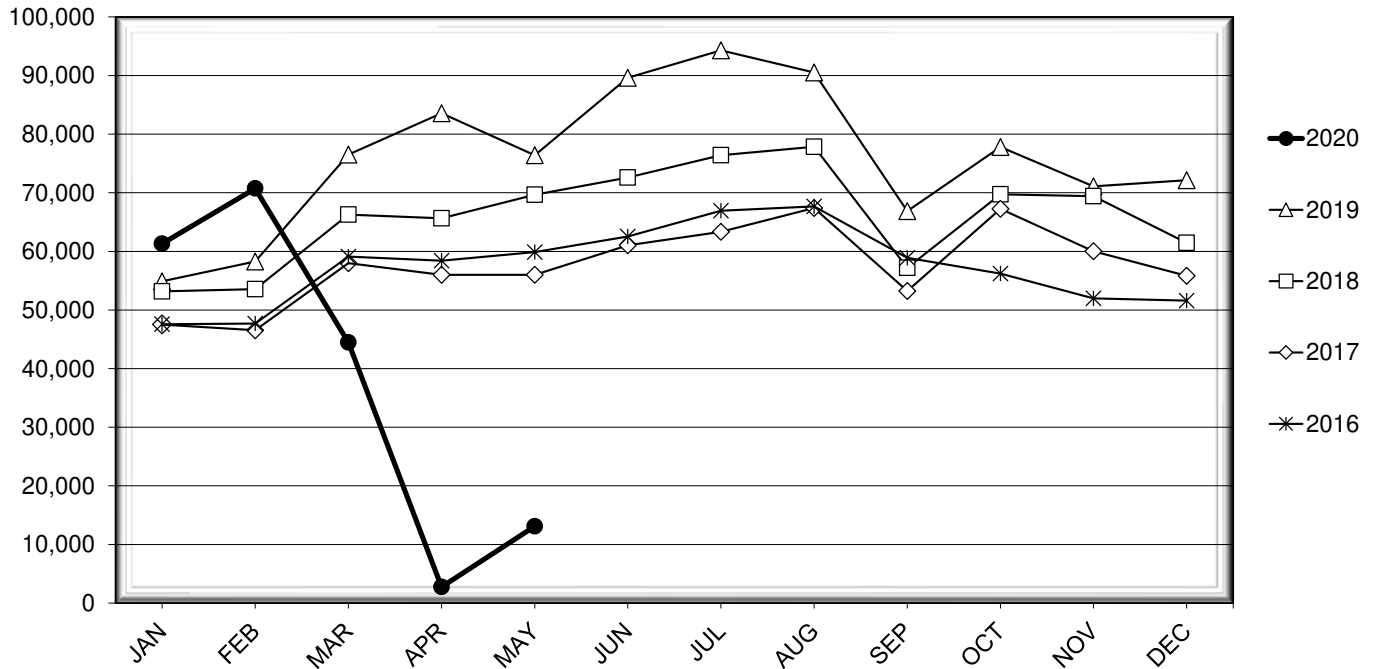


LEHIGH VALLEY INTERNATIONAL AIRPORT MONTHLY TRAFFIC REPORT MAY 2020

TOTAL PASSENGER TRAFFIC COMPARISON

Month	2020	Percent Difference	2019	2018	2017	2016
January	61,309	11.68%	54,895	53,177	47,515	47,570
February	70,732	21.37%	58,276	53,564	46,549	47,675
March **	44,478	-41.87%	76,512	66,267	57,977	59,121
April	2,749	-96.71%	83,560	65,648	56,012	58,420
May	13,107	-82.84%	76,400	69,675	55,996	59,880
June			89,609	72,600	61,044	62,542
July			94,298	76,394	63,336	66,953
August			90,524	77,851	67,402	67,673
September			66,854	57,195	53,228	58,906
October			77,794	69,736	67,261	56,198
November			71,098	69,414	60,008	51,971
December			72,150	61,453	55,826	51,596

COMPARISON OF TOTAL PASSENGERS



** COVID-19 PANDEMIC

**LEHIGH VALLEY INTERNATIONAL AIRPORT (ABE)
MONTHLY TRAFFIC REPORT
MAY 2020**

MAY					YEAR-TO-DATE							
					2020	2019	Increase (Decrease)	Percent Difference				
MAJOR AIRLINES:												
Passengers												
	Enplaned	0	731	(731)	-100.00%	5,713	11,858	(6,145)	-51.82%			
	Deplaned	0	632	(632)	-100.00%	5,781	11,136	(5,355)	-48.09%			
	Sub-total	0	1,363	(1,363)	-100.00%	11,494	22,994	(11,500)	-50.01%			
REGIONAL AIRLINES:												
Passengers												
	Enplaned	6,764	37,348	(30,584)	-81.89%	90,905	164,237	(73,332)	-44.65%			
	Deplaned	6,343	37,689	(31,346)	-83.17%	89,976	162,412	(72,436)	-44.60%			
	Sub-total	13,107	75,037	(61,930)	-82.53%	180,881	326,649	(145,768)	-44.63%			
TOTAL PASSENGERS		13,107	76,400	(63,293)	-82.84%	192,375	349,643	(157,268)	-44.98%			
CARGO:												
	Enplaned	9,585,132	7,399,740	2,185,392	29.53%	45,839,046	40,294,904	5,544,142	13.76%			
	Deplaned	11,808,870	6,620,912	5,187,958	78.36%	50,030,702	30,861,957	19,168,745	62.11%			
TOTAL CARGO		21,394,002	14,020,652	7,373,350	52.59%	95,869,748	71,156,861	24,712,887	34.73%			
CUSTOMS: Entries					0	15	(15)	-100.00%	23	76	(53)	-69.74%

MONTHLY AIRCRAFT ACTIVITY

The FEDERAL AVIATION ADMINISTRATION
AIR TRAFFIC CONTROL TOWER at LVIA recorded
the following aircraft take-offs and landings for the month:

MAY					YEAR-TO-DATE							
					2020	2019	Increase (Decrease)	Percent Difference				
Major Airlines					573	976	(403)	-41.29%	4,215	4,409	(194)	-4.40%
Regional Airlines					268	756	(488)	-64.55%	2,418	3,689	(1,271)	-34.45%
General Aviation					1,554	2,588	(1,034)	-39.95%	8,468	10,834	(2,366)	-21.84%
Military					54	34	20	58.82%	169	185	(16)	-8.65%
Total Itinerant					2,449	4,354	(1,905)	-43.75%	15,270	19,117	(3,847)	-20.12%
Total Local					1,559	3,365	(1,806)	-53.67%	8,813	14,215	(5,402)	-38.00%
TOTAL OPERATIONS					4,008	7,719	(3,711)	-48.08%	24,083	33,332	(9,249)	-27.75%

**LEHIGH VALLEY INTERNATIONAL AIRPORT (ABE)
MONTHLY TRAFFIC REPORT
AIRLINE PASSENGER STATISTICS**

AIRLINE / OPERATOR	MAY ENPLANEMENT DATA				MAY DEPLANEMENT DATA			
	2020	2019	Difference	% Change	2020	2019	Difference	% Change
Allegiant Air	3,851	14,043	(10,192)	-72.58%	3,455	14,458	(11,003)	-76.10%
Envoy	501	2,578	(2,077)	-80.57%	500	2,733	(2,233)	-81.71%
Piedmont	8	3,094	(3,086)	-99.74%	4	2,832	(2,828)	-99.86%
PSA	2,084	5,330	(3,246)	-60.90%	1,855	5,415	(3,560)	-65.74%
American Airlines Total	2,593	11,002	(8,409)	-76.43%	2,359	10,980	(8,621)	-78.52%
Endeavor	-	4,900	(4,900)	-100.00%	-	5,085	(5,085)	-100.00%
Skywest	124	3,410	(3,286)	-96.36%	331	3,381	(3,050)	-90.21%
Delta Connection Subtotal	124	8,310	(8,186)	-98.51%	331	8,466	(8,135)	-96.09%
Delta Air Lines Mainline	-	731	(731)	-100.00%	-	632	(632)	-100.00%
Delta Air Lines Total	124	9,041	(8,917)	-98.63%	331	9,098	(8,767)	-96.36%
Air Wisconsin	-	2,274	(2,274)	-100.00%	-	2,310	(2,310)	-100.00%
GoJet	21	-	21	N/A	16	-	16	N/A
Skywest	175	-	175	N/A	182	-	182	N/A
United Shuttle	-	1,577	(1,577)	-100.00%	-	1,333	(1,333)	-100.00%
United Airlines Total	196	3,851	(3,655)	-94.91%	198	3,643	(3,445)	-94.56%
Charters	-	142	(142)	-100.00%	-	142	(142)	-100.00%

MONTHLY TOTALS	MAY ENPLANEMENT DATA				MAY DEPLANEMENT DATA			
	2020	2019	Difference	% Change	2020	2019	Difference	% Change
	6,764	38,079	(31,315)	-82.24%	6,343	38,321	(31,978)	-83.45%

TOTAL PASSENGERS FOR MAY 2020: 13,107
PERCENT CHANGE VERSUS MAY 2019: - 82.84%