

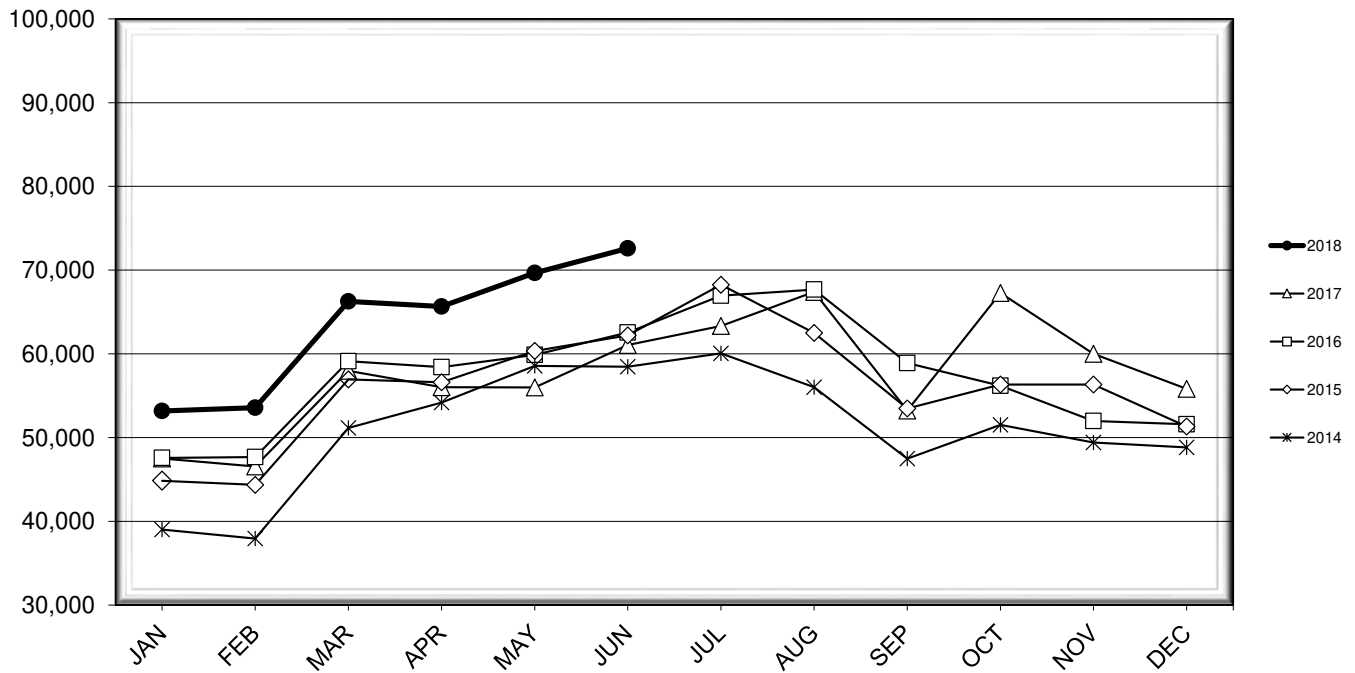


LEHIGH VALLEY INTERNATIONAL AIRPORT MONTHLY TRAFFIC REPORT JUNE 2018

TOTAL PASSENGER TRAFFIC COMPARISON

Month	2018	Percent Difference	2017	2016	2015	2014
January	53,177	11.92%	47,515	47,570	44,848	39,020
February	53,564	15.07%	46,549	47,675	44,358	37,943
March	66,267	14.30%	57,977	59,121	56,939	51,161
April	65,648	17.20%	56,012	58,420	56,606	54,173
May	69,675	24.43%	55,996	59,880	60,335	58,567
June	72,600	18.93%	61,044	62,542	62,200	58,471
July			63,336	66,953	68,256	60,064
August			67,402	67,673	62,497	56,021
September			53,228	58,906	53,474	47,471
October			67,261	56,198	56,335	51,509
November			60,008	51,971	56,326	49,414
December			55,826	51,596	51,331	48,836

COMPARISON OF TOTAL PASSENGERS



**LEHIGH VALLEY INTERNATIONAL AIRPORT (ABE)
MONTHLY TRAFFIC REPORT
JUNE 2018**

	JUNE				YEAR-TO-DATE			
	2018	2017	Increase (Decrease)	Percent Difference	2018	2017	Increase (Decrease)	Percent Difference
MAJOR AIRLINES:								
Passengers								
Enplaned	2,903	2,308	595	25.78%	17,108	14,472	2,636	18.21%
Deplaned	2,625	1,876	749	39.93%	16,303	13,342	2,961	22.19%
Sub-total	5,528	4,184	1,344	32.12%	33,411	27,814	5,597	20.12%
REGIONAL AIRLINES:								
Passengers								
Enplaned	33,883	28,428	5,455	19.19%	174,865	148,825	26,040	17.50%
Deplaned	33,189	28,432	4,757	16.73%	172,655	148,454	24,201	16.30%
Sub-total	67,072	56,860	10,212	17.96%	347,520	297,279	50,241	16.90%
TOTAL PASSENGERS	72,600	61,044	11,556	18.93%	380,931	325,093	55,838	17.18%
CARGO:								
Enplaned	8,825,346	6,656,153	2,169,193	32.59%	49,462,503	50,528,823	(1,066,320)	-2.11%
Deplaned	8,824,240	7,457,590	1,366,650	18.33%	48,123,979	51,440,635	(3,316,656)	-6.45%
TOTAL CARGO	17,649,586	14,113,743	3,535,843	25.05%	97,586,482	101,969,458	(4,382,976)	-4.30%
CUSTOMS: Entries	16	14	2	14.29%	84	78	6	7.69%

MONTHLY AIRCRAFT ACTIVITY

The FEDERAL AVIATION ADMINISTRATION
AIR TRAFFIC CONTROL TOWER at LVIA recorded
the following aircraft take-offs and landings for the month:

	JUNE				YEAR-TO-DATE			
	2018	2017	Increase (Decrease)	Percent Difference	2018	2017	Increase (Decrease)	Percent Difference
Major Airlines	898	873	25	2.86%	5,098	4,947	151	3.05%
Regional Airlines	794	842	(48)	-5.70%	4,248	4,646	(398)	-8.57%
General Aviation	2,581	2,329	252	10.82%	12,168	12,060	108	0.90%
Military	68	55	13	23.64%	335	300	35	11.67%
Total Itinerant	4,341	4,099	242	5.90%	21,849	21,953	(104)	-0.47%
Total Local	3,104	3,712	(608)	-16.38%	14,150	17,681	(3,531)	-19.97%
TOTAL OPERATIONS	7,445	7,811	(366)	-4.69%	35,999	39,634	(3,635)	-9.17%

