

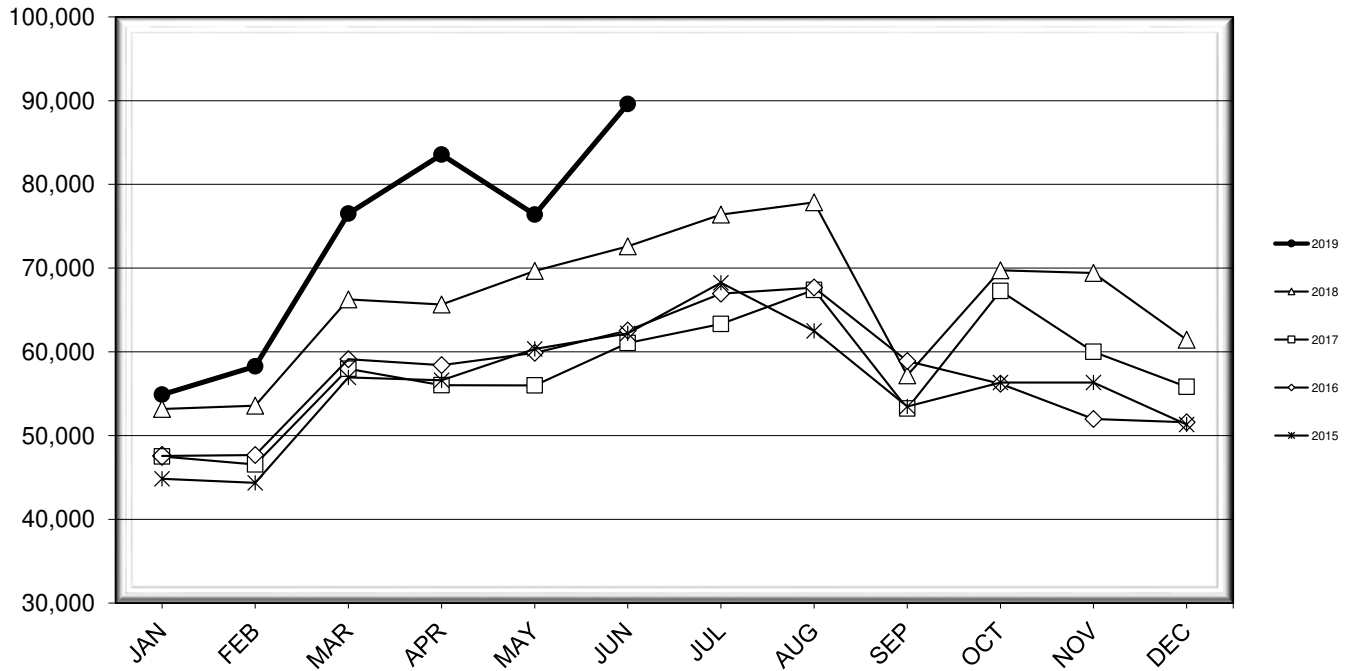


LEHIGH VALLEY INTERNATIONAL AIRPORT MONTHLY TRAFFIC REPORT JUNE 2019

TOTAL PASSENGER TRAFFIC COMPARISON

Month	2019	Percent Difference	2018	2017	2016	2015
January	54,895	3.23%	53,177	47,515	47,570	44,848
February	58,276	8.80%	53,564	46,549	47,675	44,358
March	76,512	15.46%	66,267	57,977	59,121	56,939
April	83,560	27.28%	65,648	56,012	58,420	56,606
May	76,400	9.65%	69,675	55,996	59,880	60,335
June	89,609	23.43%	72,600	61,044	62,542	62,200
July			76,394	63,336	66,953	68,256
August			77,851	67,402	67,673	62,497
September			57,195	53,228	58,906	53,474
October			69,736	67,261	56,198	56,335
November			69,414	60,008	51,971	56,326
December			61,453	55,826	51,596	51,331

COMPARISON OF TOTAL PASSENGERS



**LEHIGH VALLEY INTERNATIONAL AIRPORT (ABE)
MONTHLY TRAFFIC REPORT
JUNE 2019**

		JUNE				YEAR-TO-DATE			
		2019	2018	Increase (Decrease)	Percent Difference	2019	2018	Increase (Decrease)	Percent Difference
MAJOR AIRLINES:									
Passengers									
Enplaned		3,030	2,903	127	4.37%	14,888	17,108	(2,220)	-12.98%
Deplaned		3,028	2,625	403	15.35%	14,164	16,303	(2,139)	-13.12%
Sub-total		6,058	5,528	530	9.59%	29,052	33,411	(4,359)	-13.05%
REGIONAL AIRLINES:									
Passengers									
Enplaned		41,610	33,883	7,727	22.80%	205,847	174,865	30,982	17.72%
Deplaned		41,941	33,189	8,752	26.37%	204,353	172,655	31,698	18.36%
Sub-total		83,551	67,072	16,479	24.57%	410,200	347,520	62,680	18.04%
TOTAL PASSENGERS		89,609	72,600	17,009	23.43%	439,252	380,931	58,321	15.31%
CARGO:									
Enplaned		7,378,232	8,825,346	(1,447,114)	-16.40%	47,673,136	49,462,503	(1,789,367)	-3.62%
Deplaned		7,022,042	8,824,240	(1,802,198)	-20.42%	37,883,999	48,123,979	(10,239,980)	-21.28%
TOTAL CARGO		14,400,274	17,649,586	(3,249,312)	-18.41%	85,557,135	97,586,482	(12,029,347)	-12.33%
CUSTOMS: Entries									
		10	16	(6)	-37.50%	86	84	2	2.38%

MONTHLY AIRCRAFT ACTIVITY

The FEDERAL AVIATION ADMINISTRATION
AIR TRAFFIC CONTROL TOWER at LVIA recorded
the following aircraft take-offs and landings for the month:

		JUNE				YEAR-TO-DATE			
		2019	2018	Increase (Decrease)	Percent Difference	2019	2018	Increase (Decrease)	Percent Difference
Major Airlines		985	898	87	9.69%	5,394	5,098	296	5.81%
Regional Airlines		908	794	114	14.36%	4,597	4,248	349	8.22%
General Aviation		2,778	2,581	197	7.63%	13,612	12,168	1,444	11.87%
Military		50	68	(18)	-26.47%	235	335	(100)	-29.85%
Total Itinerant		4,721	4,341	380	8.75%	23,838	21,849	1,989	9.10%
Total Local		3,576	3,104	472	15.21%	17,791	14,150	3,641	25.73%
TOTAL OPERATIONS		8,297	7,445	852	11.44%	41,629	35,999	5,630	15.64%

**LEHIGH VALLEY INTERNATIONAL AIRPORT (ABE)
MONTHLY TRAFFIC REPORT
AIRLINE PASSENGER STATISTICS**

AIRLINE / OPERATOR	JUNE ENPLANEMENT DATA				JUNE DEPLANEMENT DATA			
	2019	2018	Difference	% Change	2019	2018	Difference	% Change
Allegiant Air	18,033	14,377	3,656	25.43%	17,739	13,967	3,772	27.01%
Endeavor Airlines	3,433	913	2,520	276.01%	3,835	973	2,862	294.14%
Express Jet	-	2,709	(2,709)	-100.00%	-	2,701	(2,701)	-100.00%
GoJet	-	-	0	N/A	58	-	58	N/A
Republic	-	-	0	N/A	144	-	144	N/A
Skywest	3,646	3,099	547	17.65%	3,530	3,072	458	14.91%
Delta Connection Subtotal	7,079	6,721	358	5.33%	7,567	6,746	821	12.17%
Delta Air Lines Mainline	3,030	2,903	127	4.37%	3,028	2,625	403	15.35%
Delta Airlines Total	10,109	9,624	485	5.04%	10,595	9,371	1,224	13.06%
Air Wisconsin	3,239	1,884	1,355	71.92%	3,286	1,853	1,433	77.33%
Express Jet	195	501	(306)	-61.08%	422	575	(153)	-26.61%
Skywest	120	-	120	N/A	137	-	137	N/A
Republic	-	-	0	N/A	69	-	69	N/A
United Shuttle	1,556	1,400	156	11.14%	1,250	1,200	50	4.17%
United Airlines Total	5,110	3,785	1,325	35.01%	5,164	3,628	1,536	42.34%
Envoy	2,312	-	2,312	N/A	2,692	-	2,692	N/A
Skywest	-	-	0	N/A	33	-	33	N/A
PSA Airlines	5,461	4,835	626	12.95%	5,586	4,998	588	11.76%
Piedmont Airlines	3,476	4,024	(548)	-13.62%	3,021	3,709	(688)	-18.55%
American Airlines Total	11,249	8,859	2,390	26.98%	11,332	8,707	2,625	30.15%
Charters	139	141	(2)	-1.42%	139	141	(2)	-1.42%
MONTHLY TOTALS	44,640	36,786	7,854	21.35%	44,969	35,814	9,155	25.56%

**TOTAL PASSENGERS FOR JUNE 2019: 89,609
PERCENT CHANGE VERSUS JUNE 2018: +23.43%**