

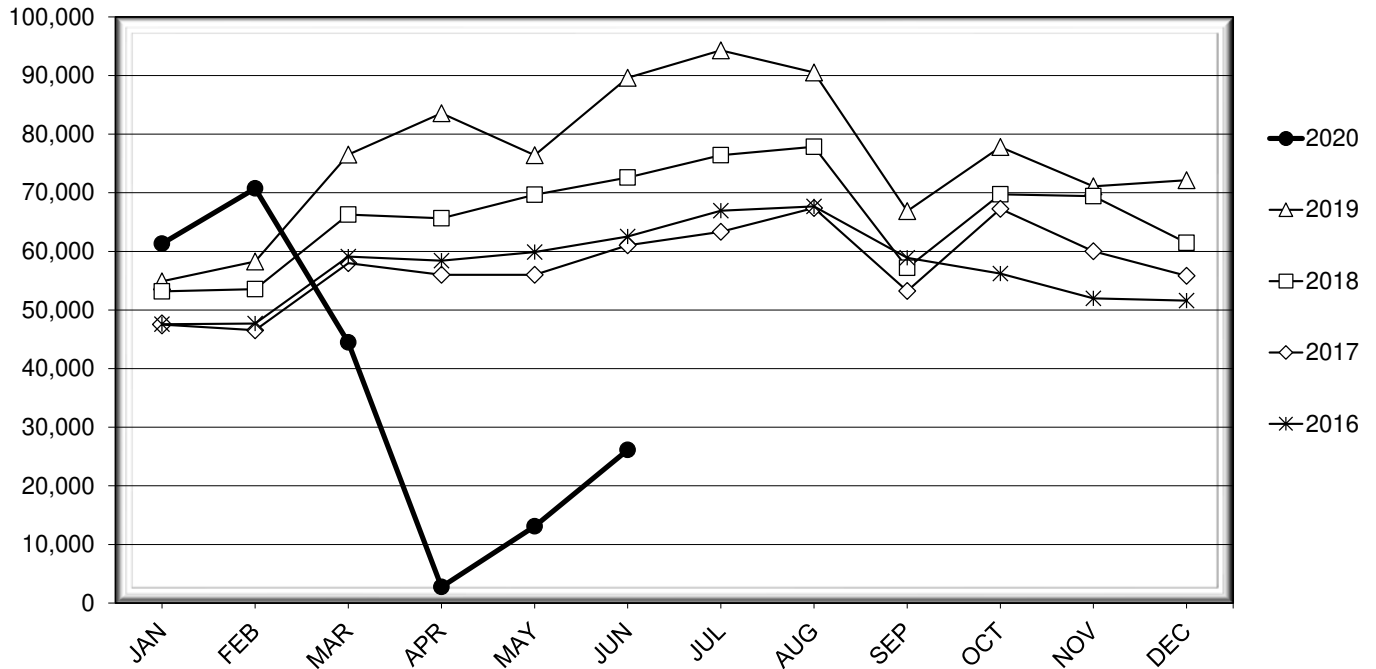


LEHIGH VALLEY INTERNATIONAL AIRPORT MONTHLY TRAFFIC REPORT JUNE 2020

TOTAL PASSENGER TRAFFIC COMPARISON

Month	2020	Percent Difference	2019	2018	2017	2016
January	61,309	11.68%	54,895	53,177	47,515	47,570
February	70,732	21.37%	58,276	53,564	46,549	47,675
March **	44,478	-41.87%	76,512	66,267	57,977	59,121
April	2,749	-96.71%	83,560	65,648	56,012	58,420
May	13,107	-82.84%	76,400	69,675	55,996	59,880
June	26,123	-70.85%	89,609	72,600	61,044	62,542
July			94,298	76,394	63,336	66,953
August			90,524	77,851	67,402	67,673
September			66,854	57,195	53,228	58,906
October			77,794	69,736	67,261	56,198
November			71,098	69,414	60,008	51,971
December			72,150	61,453	55,826	51,596

COMPARISON OF TOTAL PASSENGERS



** COVID-19 PANDEMIC

**LEHIGH VALLEY INTERNATIONAL AIRPORT (ABE)
MONTHLY TRAFFIC REPORT
JUNE 2020**

		JUNE				YEAR-TO-DATE			
		2020	2019	Increase (Decrease)	Percent Difference	2020	2019	Increase (Decrease)	Percent Difference
MAJOR AIRLINES:									
Passengers									
Enplaned		0	3,030	(3,030)	-100.00%	5,713	14,888	(9,175)	-61.63%
Deplaned		0	3,028	(3,028)	-100.00%	5,781	14,164	(8,383)	-59.19%
Sub-total		0	6,058	(6,058)	-100.00%	11,494	29,052	(17,558)	-60.44%
REGIONAL AIRLINES:									
Passengers									
Enplaned		13,122	41,610	(28,488)	-68.46%	104,027	205,847	(101,820)	-49.46%
Deplaned		13,001	41,941	(28,940)	-69.00%	102,977	204,353	(101,376)	-49.61%
Sub-total		26,123	83,551	(57,428)	-68.73%	207,004	410,200	(203,196)	-49.54%
TOTAL PASSENGERS		26,123	89,609	(63,486)	-70.85%	218,498	439,252	(220,754)	-50.26%
CARGO:									
Enplaned		6,892,423	7,378,232	(485,809)	-6.58%	52,731,469	47,673,136	5,058,333	10.61%
Deplaned		8,286,289	7,022,042	1,264,247	18.00%	58,316,991	37,883,999	20,432,992	53.94%
TOTAL CARGO		15,178,712	14,400,274	778,438	5.41%	111,048,460	85,557,135	25,491,325	29.79%
CUSTOMS: Entries									
		6	10	(4)	-40.00%	29	86	(57)	-66.28%

MONTHLY AIRCRAFT ACTIVITY

The FEDERAL AVIATION ADMINISTRATION
AIR TRAFFIC CONTROL TOWER at LVIA recorded
the following aircraft take-offs and landings for the month:

		JUNE				YEAR-TO-DATE			
		2020	2019	Increase (Decrease)	Percent Difference	2020	2019	Increase (Decrease)	Percent Difference
Major Airlines		592	985	(393)	-39.90%	4,807	5,394	(587)	-10.88%
Regional Airlines		362	908	(546)	-60.13%	2,780	4,597	(1,817)	-39.53%
General Aviation		2,663	2,778	(115)	-4.14%	11,131	13,612	(2,481)	-18.23%
Military		37	50	(13)	-26.00%	206	235	(29)	-12.34%
Total Itinerant		3,654	4,721	(1,067)	-22.60%	18,924	23,838	(4,914)	-20.61%
Total Local		2,600	3,576	(976)	-27.29%	11,413	17,791	(6,378)	-35.85%
TOTAL OPERATIONS		6,254	8,297	(2,043)	-24.62%	30,337	41,629	(11,292)	-27.13%

LEHIGH VALLEY INTERNATIONAL AIRPORT (ABE)

MONTHLY TRAFFIC REPORT

AIRLINE PASSENGER STATISTICS

AIRLINE / OPERATOR	JUNE ENPLANEMENT DATA				JUNE DEPLANEMENT DATA				
	2020	2019	Difference	% Change	2020	2019	Difference	% Change	
Allegiant Air	7,731	18,033	(10,302)	-57.13%	7,577	17,739	(10,162)	-57.29%	
Envoy	745	2,312	(1,567)	-67.78%	849	2,692	(1,843)	-68.46%	
Piedmont	-	3,476	(3,476)	-100.00%	-	3,021	(3,021)	-100.00%	
PSA	3,101	5,461	(2,360)	-43.22%	3,034	5,586	(2,552)	-45.69%	
Skywest	-	-	0	N/A	-	33	(33)	-100.00%	
American Airlines Total	3,846	11,249	(7,403)	-65.81%	3,883	11,332	(7,449)	-65.73%	
Endeavor	521	3,433	(2,912)	-84.82%	383	3,835	(3,452)	-90.01%	
GoJet	-	-	0	N/A	-	58	(58)	-100.00%	
Republic	-	-	0	N/A	-	144	(144)	-100.00%	
Skywest	-	3,646	(3,646)	-100.00%	-	3,530	(3,530)	-100.00%	
Delta Connection Subtotal	521	7,079	(6,558)	-92.64%	383	7,567	(7,184)	-94.94%	
Delta Air Lines Mainline	-	3,030	(3,030)	-100.00%	-	3,028	(3,028)	-100.00%	
Delta Air Lines Total	521	10,109	(9,588)	-94.85%	383	10,595	(10,212)	-96.39%	
Air Wisconsin	-	3,239	(3,239)	-100.00%	-	3,286	(3,286)	-100.00%	
Express Jet	-	195	(195)	-100.00%	-	422	(422)	-100.00%	
Republic	-	-	0	N/A	-	69	(69)	-100.00%	
Skywest	937	120	817	680.83%	1,071	137	934	681.75%	
United Shuttle	-	1,556	(1,556)	-100.00%	-	1,250	(1,250)	-100.00%	
United Airlines Total	937	5,110	(4,173)	-81.66%	1,071	5,164	(4,093)	-79.26%	
Charters	87	139	(52)	-37.41%	87	139	(52)	-37.41%	
JUNE ENPLANEMENT DATA					JUNE DEPLANEMENT DATA				
	<u>2020</u>	<u>2019</u>	<u>Difference</u>	<u>% Change</u>	<u>2020</u>	<u>2019</u>	<u>Difference</u>	<u>% Change</u>	
MONTHLY TOTALS	13,122	44,640	(31,518)	-70.60%	13,001	44,969	(31,968)	-71.09%	

TOTAL PASSENGERS FOR JUNE 2020: 26,123
PERCENT CHANGE VERSUS JUNE 2019: - 70.85%