

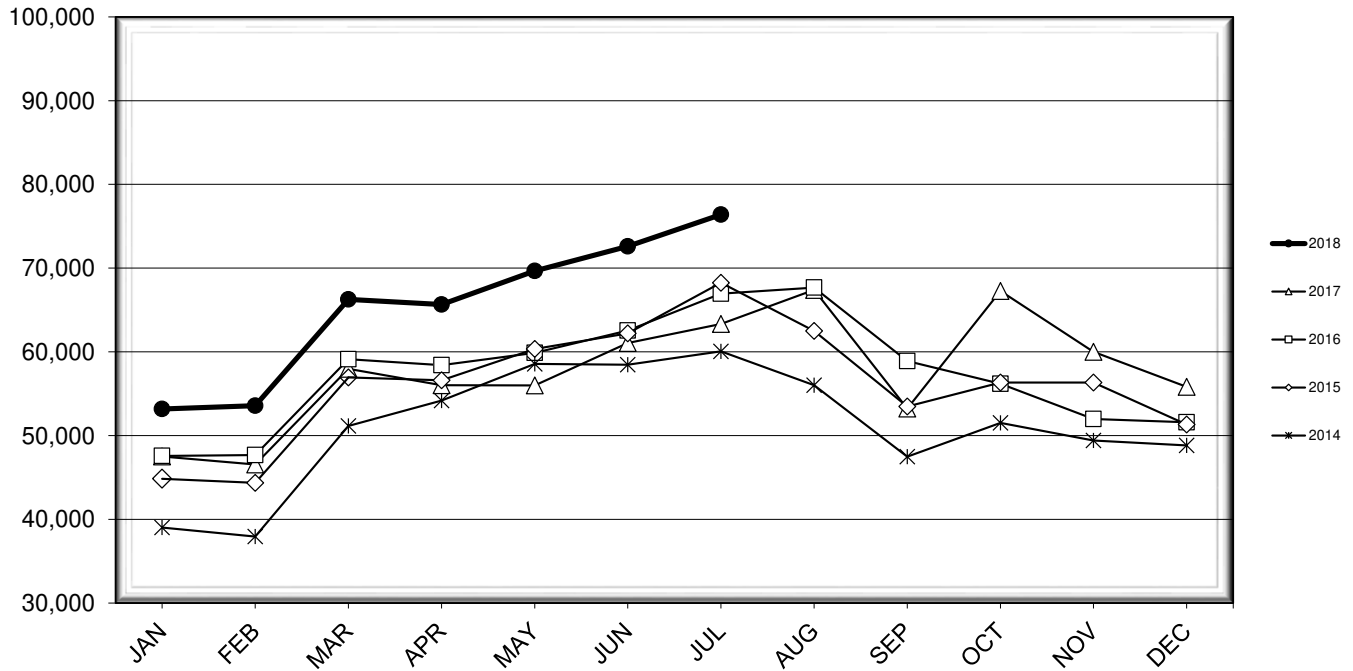


# LEHIGH VALLEY INTERNATIONAL AIRPORT MONTHLY TRAFFIC REPORT JULY 2018

## TOTAL PASSENGER TRAFFIC COMPARISON

Month	2018	Percent Difference	2017	2016	2015	2014
January	53,177	11.92%	47,515	47,570	44,848	39,020
February	53,564	15.07%	46,549	47,675	44,358	37,943
March	66,267	14.30%	57,977	59,121	56,939	51,161
April	65,648	17.20%	56,012	58,420	56,606	54,173
May	69,675	24.43%	55,996	59,880	60,335	58,567
June	72,600	18.93%	61,044	62,542	62,200	58,471
July	76,394	20.62%	63,336	66,953	68,256	60,064
August			67,402	67,673	62,497	56,021
September			53,228	58,906	53,474	47,471
October			67,261	56,198	56,335	51,509
November			60,008	51,971	56,326	49,414
December			55,826	51,596	51,331	48,836

## COMPARISON OF TOTAL PASSENGERS



**LEHIGH VALLEY INTERNATIONAL AIRPORT (ABE)  
MONTHLY TRAFFIC REPORT  
JULY 2018**

**JULY**

**YEAR-TO-DATE**

		<b>2018</b>	<b>2017</b>	<b>Increase (Decrease)</b>	<b>Percent Difference</b>	<b>2018</b>	<b>2017</b>	<b>Increase (Decrease)</b>	<b>Percent Difference</b>
<b>MAJOR AIRLINES:</b>									
Passengers									
Enplaned		3,065	2,551	514	20.15%	20,173	17,023	3,150	18.50%
Deplaned		2,759	2,222	537	24.17%	19,062	15,564	3,498	22.47%
Sub-total		5,824	4,773	1,051	22.02%	39,235	32,587	6,648	20.40%
<b>REGIONAL AIRLINES:</b>									
Passengers									
Enplaned		35,570	29,344	6,226	21.22%	210,435	178,169	32,266	18.11%
Deplaned		35,000	29,219	5,781	19.79%	207,655	177,673	29,982	16.87%
Sub-total		70,570	58,563	12,007	20.50%	418,090	355,842	62,248	17.49%
<b>TOTAL PASSENGERS</b>		<b>76,394</b>	<b>63,336</b>	<b>13,058</b>	<b>20.62%</b>	<b>457,325</b>	<b>388,429</b>	<b>68,896</b>	<b>17.74%</b>
<b>CARGO:</b>									
Enplaned		9,432,359	8,115,638	1,316,721	16.22%	58,894,862	58,644,461	250,401	0.43%
Deplaned		8,872,911	7,083,746	1,789,165	25.26%	56,996,890	58,524,381	(1,527,491)	-2.61%
<b>TOTAL CARGO</b>		<b>18,305,270</b>	<b>15,199,384</b>	<b>3,105,886</b>	<b>20.43%</b>	<b>115,891,752</b>	<b>117,168,842</b>	<b>(1,277,090)</b>	<b>-1.09%</b>
<b>CUSTOMS: Entries</b>									
		24	18	6	33.33%	108	96	12	12.50%

**MONTHLY AIRCRAFT ACTIVITY**

The FEDERAL AVIATION ADMINISTRATION  
AIR TRAFFIC CONTROL TOWER at LVIA recorded  
the following aircraft take-offs and landings for the month:

**JULY**

**YEAR-TO-DATE**

		<b>2018</b>	<b>2017</b>	<b>Increase (Decrease)</b>	<b>Percent Difference</b>	<b>2018</b>	<b>2017</b>	<b>Increase (Decrease)</b>	<b>Percent Difference</b>
Major Airlines		938	861	77	8.94%	6,036	5,808	228	3.93%
Regional Airlines		787	791	(4)	-0.51%	5,035	5,437	(402)	-7.39%
General Aviation		2,472	2,157	315	14.60%	14,640	14,217	423	2.98%
Military		48	45	3	6.67%	383	345	38	11.01%
Total Itinerant		4,245	3,854	391	10.15%	26,094	25,807	287	1.11%
Total Local		2,889	2,465	424	17.20%	17,039	20,146	(3,107)	-15.42%
<b>TOTAL OPERATIONS</b>		<b>7,134</b>	<b>6,319</b>	<b>815</b>	<b>12.90%</b>	<b>43,133</b>	<b>45,953</b>	<b>(2,820)</b>	<b>-6.14%</b>

