

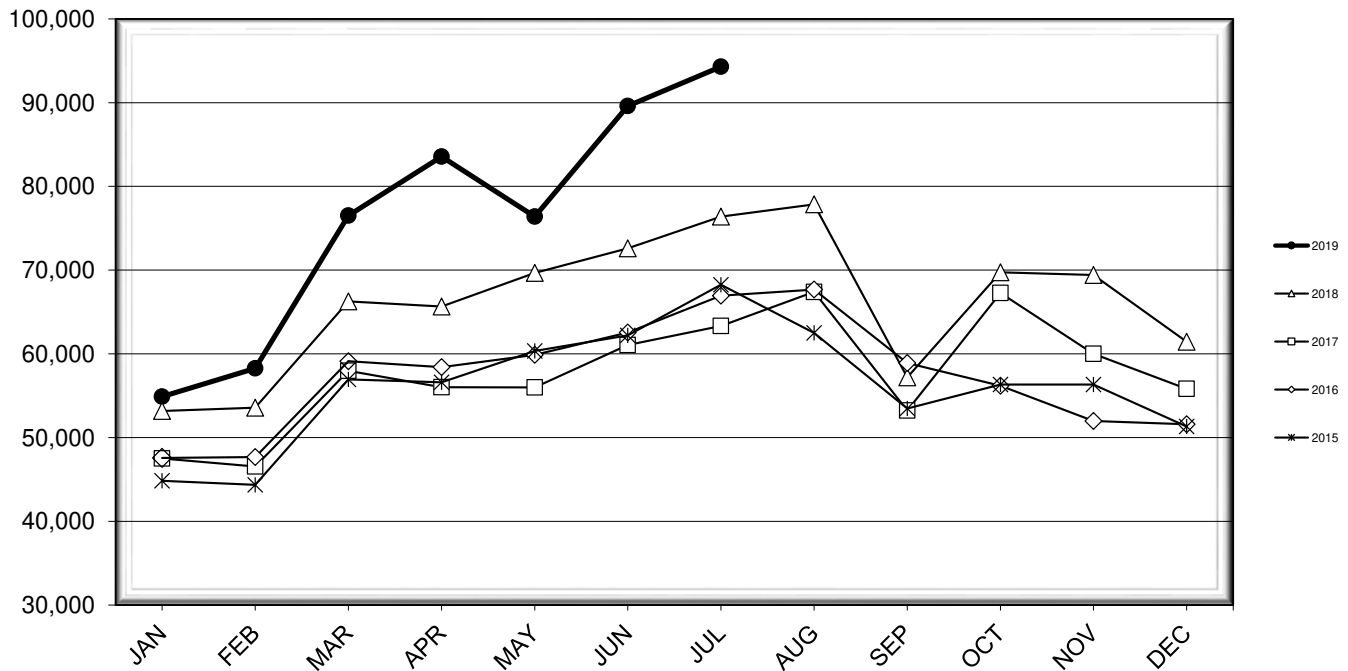


# LEHIGH VALLEY INTERNATIONAL AIRPORT MONTHLY TRAFFIC REPORT JULY 2019

## TOTAL PASSENGER TRAFFIC COMPARISON

Month	2019	Percent Difference	2018	2017	2016	2015
January	54,895	3.23%	53,177	47,515	47,570	44,848
February	58,276	8.80%	53,564	46,549	47,675	44,358
March	76,512	15.46%	66,267	57,977	59,121	56,939
April	83,560	27.28%	65,648	56,012	58,420	56,606
May	76,400	9.65%	69,675	55,996	59,880	60,335
June	89,609	23.43%	72,600	61,044	62,542	62,200
July	94,298	23.44%	76,394	63,336	66,953	68,256
August			77,851	67,402	67,673	62,497
September			57,195	53,228	58,906	53,474
October			69,736	67,261	56,198	56,335
November			69,414	60,008	51,971	56,326
December			61,453	55,826	51,596	51,331

## COMPARISON OF TOTAL PASSENGERS



**LEHIGH VALLEY INTERNATIONAL AIRPORT (ABE)  
MONTHLY TRAFFIC REPORT  
JULY 2019**

		<b>JULY</b>				<b>YEAR-TO-DATE</b>			
		<b>2019</b>	<b>2018</b>	<b>Increase (Decrease)</b>	<b>Percent Difference</b>	<b>2019</b>	<b>2018</b>	<b>Increase (Decrease)</b>	<b>Percent Difference</b>
<b>MAJOR AIRLINES:</b>									
Passengers									
Enplaned		3,025	3,065	(40)	-1.31%	17,913	20,173	(2,260)	-11.20%
Deplaned		2,805	2,759	46	1.67%	16,969	19,062	(2,093)	-10.98%
Sub-total		5,830	5,824	6	0.10%	34,882	39,235	(4,353)	-11.09%
<b>REGIONAL AIRLINES:</b>									
Passengers									
Enplaned		44,586	35,570	9,016	25.35%	250,433	210,435	39,998	19.01%
Deplaned		43,882	35,000	8,882	25.38%	248,235	207,655	40,580	19.54%
Sub-total		88,468	70,570	17,898	25.36%	498,668	418,090	80,578	19.27%
<b>TOTAL PASSENGERS</b>		<b>94,298</b>	<b>76,394</b>	<b>17,904</b>	<b>23.44%</b>	<b>533,550</b>	<b>457,325</b>	<b>76,225</b>	<b>16.67%</b>
<b>CARGO:</b>									
Enplaned		7,506,003	9,432,359	(1,926,356)	-20.42%	55,179,139	58,894,862	(3,715,723)	-6.31%
Deplaned		6,250,386	8,872,911	(2,622,525)	-29.56%	44,134,385	56,996,890	(12,862,505)	-22.57%
<b>TOTAL CARGO</b>		<b>13,756,389</b>	<b>18,305,270</b>	<b>(4,548,881)</b>	<b>-24.85%</b>	<b>99,313,524</b>	<b>115,891,752</b>	<b>(16,578,228)</b>	<b>-14.30%</b>
<b>CUSTOMS: Entries</b>									
		13	24	(11)	-45.83%	99	108	(9)	-8.33%

**MONTHLY AIRCRAFT ACTIVITY**

The FEDERAL AVIATION ADMINISTRATION  
AIR TRAFFIC CONTROL TOWER at LVIA recorded  
the following aircraft take-offs and landings for the month:

		<b>JULY</b>				<b>YEAR-TO-DATE</b>			
		<b>2019</b>	<b>2018</b>	<b>Increase (Decrease)</b>	<b>Percent Difference</b>	<b>2019</b>	<b>2018</b>	<b>Increase (Decrease)</b>	<b>Percent Difference</b>
Major Airlines		1,014	938	76	8.10%	6,408	6,036	372	6.16%
Regional Airlines		962	787	175	22.24%	5,559	5,035	524	10.41%
General Aviation		2,753	2,472	281	11.37%	16,365	14,640	1,725	11.78%
Military		44	48	(4)	-8.33%	279	383	(104)	-27.15%
Total Itinerant		4,773	4,245	528	12.44%	28,611	26,094	2,517	9.65%
Total Local		2,997	2,889	108	3.74%	20,788	17,039	3,749	22.00%
<b>TOTAL OPERATIONS</b>		<b>7,770</b>	<b>7,134</b>	<b>636</b>	<b>8.92%</b>	<b>49,399</b>	<b>43,133</b>	<b>6,266</b>	<b>14.53%</b>

