

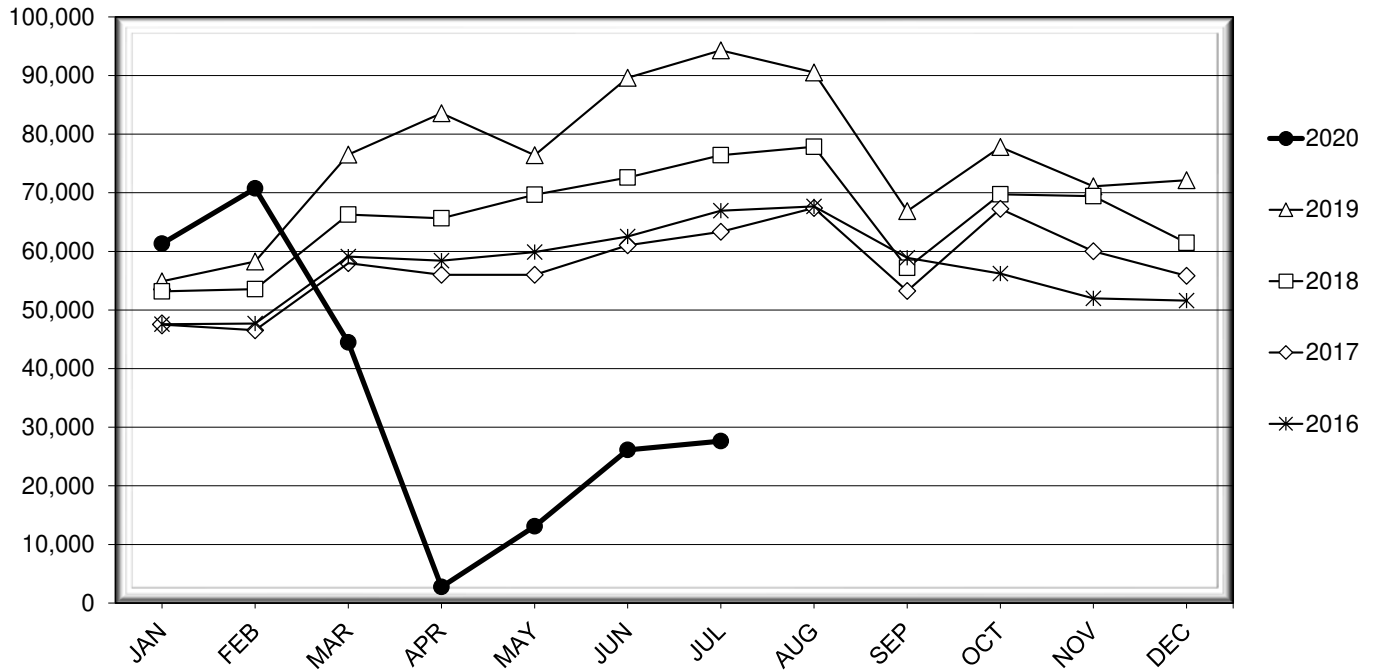


LEHIGH VALLEY INTERNATIONAL AIRPORT MONTHLY TRAFFIC REPORT JULY 2020

TOTAL PASSENGER TRAFFIC COMPARISON

Month	2020	Percent Difference	2019	2018	2017	2016
January	61,309	11.68%	54,895	53,177	47,515	47,570
February	70,732	21.37%	58,276	53,564	46,549	47,675
March **	44,478	-41.87%	76,512	66,267	57,977	59,121
April	2,749	-96.71%	83,560	65,648	56,012	58,420
May	13,107	-82.84%	76,400	69,675	55,996	59,880
June	26,123	-70.85%	89,609	72,600	61,044	62,542
July	27,612	-70.72%	94,298	76,394	63,336	66,953
August			90,524	77,851	67,402	67,673
September			66,854	57,195	53,228	58,906
October			77,794	69,736	67,261	56,198
November			71,098	69,414	60,008	51,971
December			72,150	61,453	55,826	51,596

COMPARISON OF TOTAL PASSENGERS



** COVID-19 PANDEMIC

**LEHIGH VALLEY INTERNATIONAL AIRPORT (ABE)
MONTHLY TRAFFIC REPORT
JULY 2020**

		JULY				YEAR-TO-DATE			
		2020	2019	Increase (Decrease)	Percent Difference	2020	2019	Increase (Decrease)	Percent Difference
MAJOR AIRLINES:									
Passengers									
Enplaned		0	3,025	(3,025)	-100.00%	5,713	17,913	(12,200)	-68.11%
Deplaned		0	2,805	(2,805)	-100.00%	5,781	16,969	(11,188)	-65.93%
Sub-total		0	5,830	(5,830)	-100.00%	11,494	34,882	(23,388)	-67.05%
REGIONAL AIRLINES:									
Passengers									
Enplaned		13,454	44,586	(31,132)	-69.82%	117,481	250,433	(132,952)	-53.09%
Deplaned		14,158	43,882	(29,724)	-67.74%	117,135	248,235	(131,100)	-52.81%
Sub-total		27,612	88,468	(60,856)	-68.79%	234,616	498,668	(264,052)	-52.95%
TOTAL PASSENGERS		27,612	94,298	(66,686)	-70.72%	246,110	533,550	(287,440)	-53.87%
CARGO:									
Enplaned		6,984,249	7,506,003	(521,754)	-6.95%	59,715,718	55,179,139	4,536,579	8.22%
Deplaned		7,846,411	6,250,386	1,596,025	25.53%	66,163,402	44,134,385	22,029,017	49.91%
TOTAL CARGO		14,830,660	13,756,389	1,074,271	7.81%	125,879,120	99,313,524	26,565,596	26.75%
CUSTOMS: Entries									
		1	13	(12)	-92.31%	30	99	(69)	-69.70%

MONTHLY AIRCRAFT ACTIVITY

The FEDERAL AVIATION ADMINISTRATION
AIR TRAFFIC CONTROL TOWER at LVIA recorded
the following aircraft take-offs and landings for the month:

		JULY				YEAR-TO-DATE			
		2020	2019	Increase (Decrease)	Percent Difference	2020	2019	Increase (Decrease)	Percent Difference
Major Airlines		615	1,014	(399)	-39.35%	5,422	6,408	(986)	-15.39%
Regional Airlines		387	962	(575)	-59.77%	3,167	5,559	(2,392)	-43.03%
General Aviation		2,747	2,753	(6)	-0.22%	13,878	16,365	(2,487)	-15.20%
Military		52	44	8	18.18%	258	279	(21)	-7.53%
Total Itinerant		3,801	4,773	(972)	-20.36%	22,725	28,611	(5,886)	-20.57%
Total Local		2,361	2,997	(636)	-21.22%	13,774	20,788	(7,014)	-33.74%
TOTAL OPERATIONS		6,162	7,770	(1,608)	-20.69%	36,499	49,399	(12,900)	-26.11%

**LEHIGH VALLEY INTERNATIONAL AIRPORT (ABE)
MONTHLY TRAFFIC REPORT
AIRLINE PASSENGER STATISTICS**

AIRLINE / OPERATOR	JULY ENPLANEMENT DATA				JULY DEPLANEMENT DATA			
	2020	2019	Difference	% Change	2020	2019	Difference	% Change
Allegiant Air	8,063	20,754	(12,691)	-61.15%	8,774	20,483	(11,709)	-57.16%
Envoy	1,013	2,114	(1,101)	-52.08%	1,155	2,346	(1,191)	-50.77%
Piedmont	-	4,089	(4,089)	-100.00%	-	3,588	(3,588)	-100.00%
PSA	3,112	5,303	(2,191)	-41.32%	2,992	5,391	(2,399)	-44.50%
American Airlines Total	4,125	11,506	(7,381)	-64.15%	4,147	11,325	(7,178)	-63.38%
Endeavor	778	3,592	(2,814)	-78.34%	766	3,746	(2,980)	-79.55%
Skywest	-	3,402	(3,402)	-100.00%	-	3,318	(3,318)	-100.00%
Delta Connection Subtotal	778	6,994	(6,216)	-88.88%	766	7,064	(6,298)	-89.16%
Delta Air Lines Mainline	-	3,025	(3,025)	-100.00%	-	2,754	(2,754)	-100.00%
Delta Air Lines Total	778	10,019	(9,241)	-92.23%	766	9,818	(9,052)	-92.20%
Air Wisconsin	-	3,506	(3,506)	-100.00%	-	3,336	(3,336)	-100.00%
Express Jet	-	89	(89)	-100.00%	-	86	(86)	-100.00%
Trans States	-	91	(91)	-100.00%	-	79	(79)	-100.00%
Skywest	173	-	173	N/A	167	-	167	N/A
United Shuttle	315	1,481	(1,166)	-78.73%	304	1,344	(1,040)	-77.38%
United Express Subtotal	488	5,167	(4,679)	-90.56%	471	4,845	(4,374)	-90.28%
United Airlines Mainline	-	-	0	N/A	-	51	(51)	-100.00%
United Airlines Total	488	5,167	(4,679)	-90.56%	471	4,896	(4,425)	-90.38%
Charters	-	165	(165)	-100.00%	-	165	(165)	-100.00%

MONTHLY TOTALS	JULY ENPLANEMENT DATA				JULY DEPLANEMENT DATA			
	2020	2019	Difference	% Change	2020	2019	Difference	% Change
	13,454	47,611	(34,157)	-71.74%	14,158	46,687	(32,529)	-69.67%

TOTAL PASSENGERS FOR JULY 2020: 27,612
PERCENT CHANGE VERSUS JULY 2019: -70.72%