

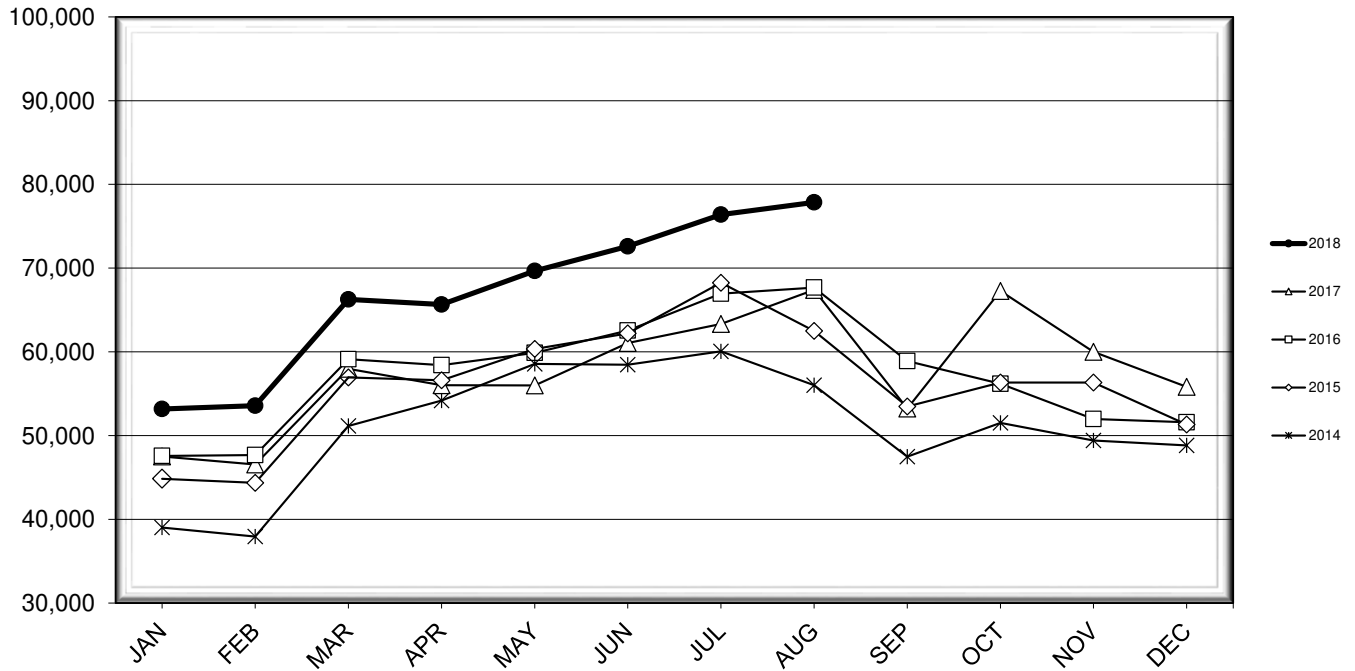


LEHIGH VALLEY INTERNATIONAL AIRPORT MONTHLY TRAFFIC REPORT AUGUST 2018

TOTAL PASSENGER TRAFFIC COMPARISON

Month	2018	Percent Difference	2017	2016	2015	2014
January	53,177	11.92%	47,515	47,570	44,848	39,020
February	53,564	15.07%	46,549	47,675	44,358	37,943
March	66,267	14.30%	57,977	59,121	56,939	51,161
April	65,648	17.20%	56,012	58,420	56,606	54,173
May	69,675	24.43%	55,996	59,880	60,335	58,567
June	72,600	18.93%	61,044	62,542	62,200	58,471
July	76,394	20.62%	63,336	66,953	68,256	60,064
August	77,851	15.50%	67,402	67,673	62,497	56,021
September			53,228	58,906	53,474	47,471
October			67,261	56,198	56,335	51,509
November			60,008	51,971	56,326	49,414
December			55,826	51,596	51,331	48,836

COMPARISON OF TOTAL PASSENGERS



**LEHIGH VALLEY INTERNATIONAL AIRPORT (ABE)
MONTHLY TRAFFIC REPORT
AUGUST 2018**

AUGUST

YEAR-TO-DATE

		2018	2017	Increase (Decrease)	Percent Difference	2018	2017	Increase (Decrease)	Percent Difference
MAJOR AIRLINES:									
Passengers									
Enplaned		3,089	2,797	292	10.44%	23,262	19,820	3,442	17.37%
Deplaned		3,096	2,474	622	25.14%	22,158	18,038	4,120	22.84%
Sub-total		6,185	5,271	914	17.34%	45,420	37,858	7,562	19.97%
REGIONAL AIRLINES:									
Passengers									
Enplaned		35,679	31,037	4,642	14.96%	246,114	209,206	36,908	17.64%
Deplaned		35,987	31,094	4,893	15.74%	243,642	208,767	34,875	16.71%
Sub-total		71,666	62,131	9,535	15.35%	489,756	417,973	71,783	17.17%
TOTAL PASSENGERS		77,851	67,402	10,449	15.50%	535,176	455,831	79,345	17.41%
CARGO:									
Enplaned		10,165,944	7,504,164	2,661,780	35.47%	69,060,806	66,148,625	2,912,181	4.40%
Deplaned		9,428,923	8,422,418	1,006,505	11.95%	66,425,813	66,946,799	(520,986)	-0.78%
TOTAL CARGO		19,594,867	15,926,582	3,668,285	23.03%	135,486,619	133,095,424	2,391,195	1.80%
CUSTOMS: Entries									
		10	21	(11)	-52.38%	118	117	1	0.85%

MONTHLY AIRCRAFT ACTIVITY

The FEDERAL AVIATION ADMINISTRATION
AIR TRAFFIC CONTROL TOWER at LVIA recorded
the following aircraft take-offs and landings for the month:

AUGUST

YEAR-TO-DATE

	2018	2017	Increase (Decrease)	Percent Difference	2018	2017	Increase (Decrease)	Percent Difference
Major Airlines	961	865	96	11.10%	6,997	6,673	324	4.86%
Regional Airlines	777	832	(55)	-6.61%	5,812	6,269	(457)	-7.29%
General Aviation	2,305	2,303	2	0.09%	16,945	16,520	425	2.57%
Military	32	53	(21)	-39.62%	415	398	17	4.27%
Total Itinerant	4,075	4,053	22	0.54%	30,169	29,860	309	1.03%
Total Local	3,157	3,043	114	3.75%	20,196	23,189	(2,993)	-12.91%
TOTAL OPERATIONS	7,232	7,096	136	1.92%	50,365	53,049	(2,684)	-5.06%

