

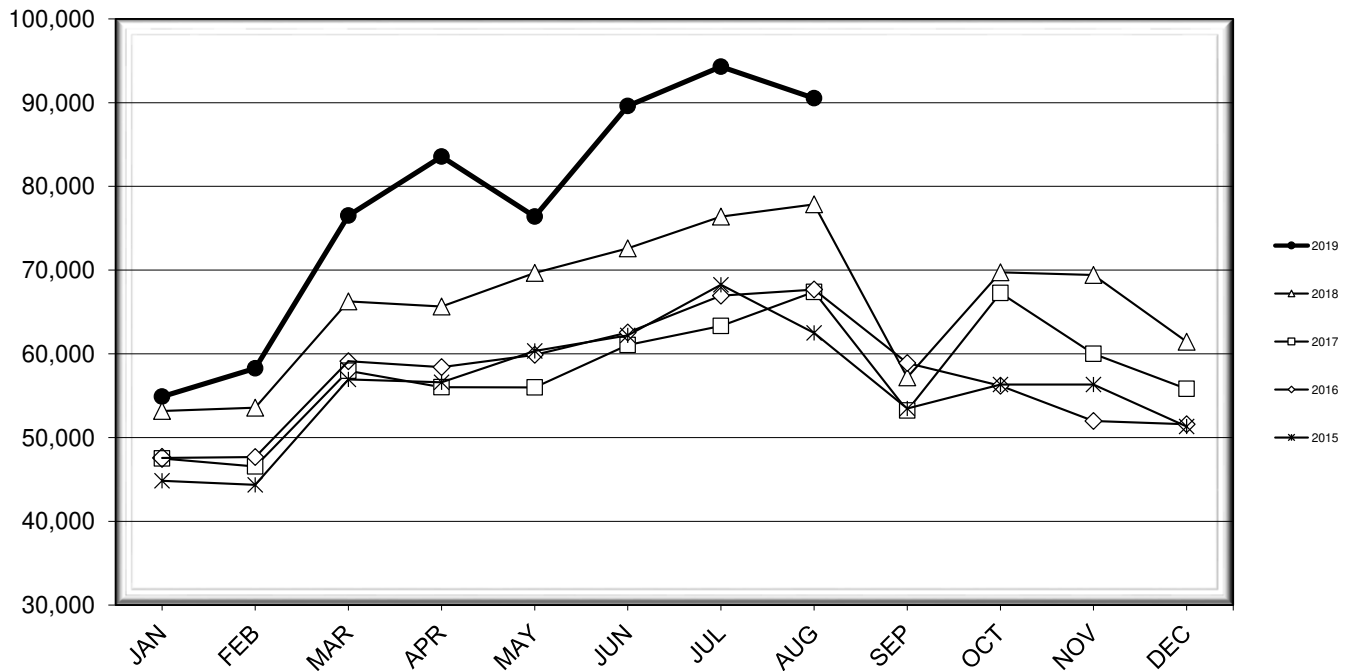


LEHIGH VALLEY INTERNATIONAL AIRPORT MONTHLY TRAFFIC REPORT AUGUST 2019

TOTAL PASSENGER TRAFFIC COMPARISON

Month	2019	Percent Difference	2018	2017	2016	2015
January	54,895	3.23%	53,177	47,515	47,570	44,848
February	58,276	8.80%	53,564	46,549	47,675	44,358
March	76,512	15.46%	66,267	57,977	59,121	56,939
April	83,560	27.28%	65,648	56,012	58,420	56,606
May	76,400	9.65%	69,675	55,996	59,880	60,335
June	89,609	23.43%	72,600	61,044	62,542	62,200
July	94,298	23.44%	76,394	63,336	66,953	68,256
August	90,524	16.28%	77,851	67,402	67,673	62,497
September			57,195	53,228	58,906	53,474
October			69,736	67,261	56,198	56,335
November			69,414	60,008	51,971	56,326
December			61,453	55,826	51,596	51,331

COMPARISON OF TOTAL PASSENGERS



**LEHIGH VALLEY INTERNATIONAL AIRPORT (ABE)
MONTHLY TRAFFIC REPORT
AUGUST 2019**

		AUGUST				YEAR-TO-DATE			
		2019	2018	Increase (Decrease)	Percent Difference	2019	2018	Increase (Decrease)	Percent Difference
MAJOR AIRLINES:									
Passengers									
Enplaned		2,998	3,089	(91)	-2.95%	20,911	23,262	(2,351)	-10.11%
Deplaned		2,940	3,096	(156)	-5.04%	19,909	22,158	(2,249)	-10.15%
Sub-total		5,938	6,185	(247)	-3.99%	40,820	45,420	(4,600)	-10.13%
REGIONAL AIRLINES:									
Passengers									
Enplaned		41,786	35,679	6,107	17.12%	292,219	246,114	46,105	18.73%
Deplaned		42,800	35,987	6,813	18.93%	291,035	243,642	47,393	19.45%
Sub-total		84,586	71,666	12,920	18.03%	583,254	489,756	93,498	19.09%
TOTAL PASSENGERS		90,524	77,851	12,673	16.28%	624,074	535,176	88,898	16.61%
CARGO:									
Enplaned		7,960,256	10,165,944	(2,205,688)	-21.70%	63,139,395	69,060,806	(5,921,411)	-8.57%
Deplaned		7,760,563	9,428,923	(1,668,360)	-17.69%	51,894,948	66,425,813	(14,530,865)	-21.88%
TOTAL CARGO		15,720,819	19,594,867	(3,874,048)	-19.77%	115,034,343	135,486,619	(20,452,276)	-15.10%
CUSTOMS: Entries									
		10	10	0	0.00%	109	118	(9)	-7.63%

MONTHLY AIRCRAFT ACTIVITY

The FEDERAL AVIATION ADMINISTRATION
AIR TRAFFIC CONTROL TOWER at LVIA recorded
the following aircraft take-offs and landings for the month:

		AUGUST				YEAR-TO-DATE			
		2019	2018	Increase (Decrease)	Percent Difference	2019	2018	Increase (Decrease)	Percent Difference
Major Airlines		1,019	961	58	6.04%	7,427	6,997	430	6.15%
Regional Airlines		952	777	175	22.52%	6,511	5,812	699	12.03%
General Aviation		2,381	2,305	76	3.30%	18,746	16,945	1,801	10.63%
Military		61	32	29	90.63%	340	415	(75)	-18.07%
Total Itinerant		4,413	4,075	338	8.29%	33,024	30,169	2,855	9.46%
Total Local		3,350	3,157	193	6.11%	24,138	20,196	3,942	19.52%
TOTAL OPERATIONS		7,763	7,232	531	7.34%	57,162	50,365	6,797	13.50%

LEHIGH VALLEY INTERNATIONAL AIRPORT (ABE) MONTHLY TRAFFIC REPORT AIRLINE PASSENGER STATISTICS

AIRLINE / OPERATOR	AUGUST ENPLANEMENT DATA				AUGUST DEPLANEMENT DATA			
	2019	2018	Difference	% Change	2019	2018	Difference	% Change
Allegiant Air	18,061	14,626	3,435	23.49%	19,168	15,046	4,122	27.40%
Endeavor Airlines	3,948	226	3,722	1646.90%	3,916	262	3,654	1394.66%
Express Jet	-	3,644	(3,644)	-100.00%	-	3,727	(3,727)	-100.00%
Skywest	3,442	3,535	(93)	-2.63%	3,597	3,741	(144)	-3.85%
Delta Connection Subtotal	7,390	7,405	(15)	-0.20%	7,513	7,730	(217)	-2.81%
Delta Air Lines Mainline	2,998	3,089	(91)	-2.95%	2,792	3,096	(304)	-9.82%
Delta Airlines Total	10,388	10,494	(106)	-1.01%	10,305	10,826	(521)	-4.81%
Air Wisconsin	3,366	2,449	917	37.44%	3,308	2,625	683	26.02%
Express Jet	87	-	87	N/A	127	-	127	N/A
Republic	66	-	66	N/A	62	-	62	N/A
Skywest	344	-	344	N/A	429	-	429	N/A
United Shuttle	1,436	1,424	12	0.84%	1,299	1,170	129	11.03%
United Express Subtotal	5,299	3,873	1,426	36.82%	5,225	3,795	1,430	37.68%
United Mainline	-	-	0	N/A	148	-	148	N/A
United Airlines Total	5,299	3,873	1,426	36.82%	5,373	3,795	1,578	41.58%
Envoy	2,150	-	2,150	N/A	2,296	-	2,296	N/A
Republic	-	-	0	N/A	8	-	8	N/A
PSA Airlines	5,029	6,098	(1,069)	-17.53%	5,031	5,945	(914)	-15.37%
Piedmont Airlines	3,857	3,530	327	9.26%	3,559	3,324	235	7.07%
American Airlines Total	11,036	9,628	1,408	14.62%	10,894	9,269	1,625	17.53%
Charters	-	147	(147)	-100.00%	-	147	(147)	-100.00%

MONTHLY TOTALS	AUGUST ENPLANEMENT DATA				AUGUST DEPLANEMENT DATA			
	2019	2018	Difference	% Change	2019	2018	Difference	% Change
	44,784	38,768	6,016	15.52%	45,740	39,083	6,657	17.03%

TOTAL PASSENGERS FOR AUGUST 2019: 90,524
PERCENT CHANGE VERSUS AUGUST 2018: +16.28%