

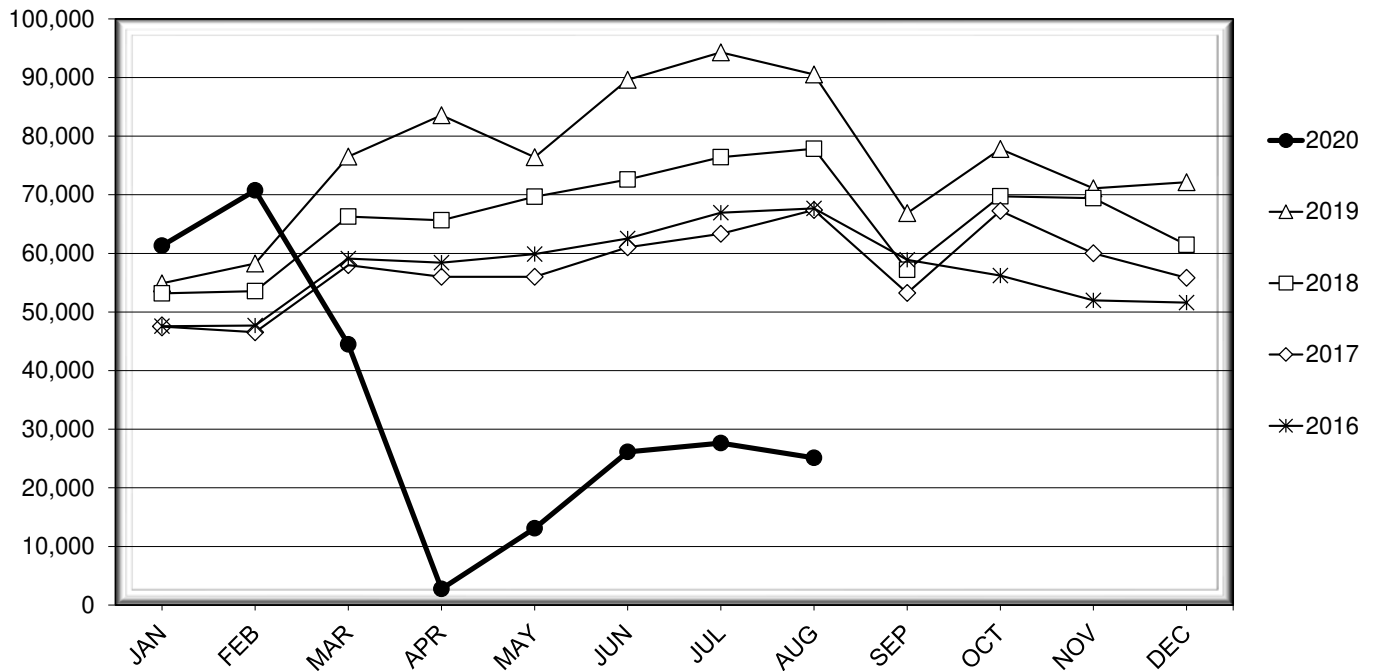


LEHIGH VALLEY INTERNATIONAL AIRPORT MONTHLY TRAFFIC REPORT AUGUST 2020

TOTAL PASSENGER TRAFFIC COMPARISON

Month	2020	Percent Difference	2019	2018	2017	2016
January	61,309	11.68%	54,895	53,177	47,515	47,570
February	70,732	21.37%	58,276	53,564	46,549	47,675
March **	44,478	-41.87%	76,512	66,267	57,977	59,121
April	2,749	-96.71%	83,560	65,648	56,012	58,420
May	13,107	-82.84%	76,400	69,675	55,996	59,880
June	26,123	-70.85%	89,609	72,600	61,044	62,542
July	27,612	-70.72%	94,298	76,394	63,336	66,953
August	25,116	-72.25%	90,524	77,851	67,402	67,673
September			66,854	57,195	53,228	58,906
October			77,794	69,736	67,261	56,198
November			71,098	69,414	60,008	51,971
December			72,150	61,453	55,826	51,596

COMPARISON OF TOTAL PASSENGERS



** COVID-19 PANDEMIC

**LEHIGH VALLEY INTERNATIONAL AIRPORT (ABE)
MONTHLY TRAFFIC REPORT
AUGUST 2020**

AUGUST

YEAR-TO-DATE

		2020	2019	Increase (Decrease)	Percent Difference	2020	2019	Increase (Decrease)	Percent Difference
MAJOR AIRLINES:									
Passengers									
Enplaned		0	2,998	(2,998)	-100.00%	5,713	20,911	(15,198)	-72.68%
Deplaned		0	2,940	(2,940)	-100.00%	5,781	19,909	(14,128)	-70.96%
Sub-total		0	5,938	(5,938)	-100.00%	11,494	40,820	(29,326)	-71.84%
REGIONAL AIRLINES:									
Passengers									
Enplaned		12,344	41,786	(29,442)	-70.46%	129,825	292,219	(162,394)	-55.57%
Deplaned		12,772	42,800	(30,028)	-70.16%	129,907	291,035	(161,128)	-55.36%
Sub-total		25,116	84,586	(59,470)	-70.31%	259,732	583,254	(323,522)	-55.47%
TOTAL PASSENGERS		25,116	90,524	(65,408)	-72.25%	271,226	624,074	(352,848)	-56.54%
CARGO:									
Enplaned		7,348,476	7,960,256	(611,780)	-7.69%	67,064,194	63,139,395	3,924,799	6.22%
Deplaned		7,469,817	7,760,563	(290,746)	-3.75%	73,633,219	51,894,948	21,738,271	41.89%
TOTAL CARGO		14,818,293	15,720,819	(902,526)	-5.74%	140,697,413	115,034,343	25,663,070	22.31%
CUSTOMS: Entries									
		4	10	(6)	-60.00%	34	109	(75)	-68.81%

MONTHLY AIRCRAFT ACTIVITY

The FEDERAL AVIATION ADMINISTRATION
AIR TRAFFIC CONTROL TOWER at LVIA recorded
the following aircraft take-offs and landings for the month:

AUGUST

YEAR-TO-DATE

		2020	2019	Increase (Decrease)	Percent Difference	2020	2019	Increase (Decrease)	Percent Difference
Major Airlines		581	1,019	(438)	-42.98%	6,003	7,427	(1,424)	-19.17%
Regional Airlines		508	952	(444)	-46.64%	3,675	6,511	(2,836)	-43.56%
General Aviation		2,730	2,381	349	14.66%	16,608	18,746	(2,138)	-11.41%
Military		11	61	(50)	-81.97%	269	340	(71)	-20.88%
Total Itinerant		3,830	4,413	(583)	-13.21%	26,555	33,024	(6,469)	-19.59%
Total Local		2,063	3,350	(1,287)	-38.42%	15,837	24,138	(8,301)	-34.39%
TOTAL OPERATIONS		5,893	7,763	(1,870)	-24.09%	42,392	57,162	(14,770)	-25.84%

**LEHIGH VALLEY INTERNATIONAL AIRPORT (ABE)
MONTHLY TRAFFIC REPORT
AIRLINE PASSENGER STATISTICS**

AIRLINE / OPERATOR	AUGUST ENPLANEMENT DATA				AUGUST DEPLANEMENT DATA			
	2020	2019	Difference	% Change	2020	2019	Difference	% Change
Allegiant Air	5,931	18,061	(12,130)	-67.16%	6,289	19,168	(12,879)	-67.19%
Envoy	1,217	2,150	(933)	-43.40%	1,275	2,296	(1,021)	-44.47%
Piedmont	-	3,857	(3,857)	-100.00%	-	3,559	(3,559)	-100.00%
PSA	3,206	5,029	(1,823)	-36.25%	3,161	5,031	(1,870)	-37.17%
Republic	-	-	0	N/A	-	8	(8)	-100.00%
American Airlines Total	4,423	11,036	(6,613)	-59.92%	4,436	10,894	(6,458)	-59.28%
Endeavor	-	3,948	(3,948)	-100.00%	-	3,916	(3,916)	-100.00%
Skywest	1,684	3,442	(1,758)	-51.07%	1,750	3,597	(1,847)	-51.35%
Delta Connection Subtotal	1,684	7,390	(5,706)	-77.21%	1,750	7,513	(5,763)	-76.71%
Delta Air Lines Mainline	-	2,998	(2,998)	-100.00%	-	2,792	(2,792)	-100.00%
Delta Air Lines Total	1,684	10,388	(8,704)	-83.79%	1,750	10,305	(8,555)	-83.02%
Air Wisconsin	-	3,366	(3,366)	-100.00%	-	3,308	(3,308)	-100.00%
Express Jet	-	87	(87)	-100.00%	-	127	(127)	-100.00%
Republic	-	66	(66)	-100.00%	-	62	(62)	-100.00%
Skywest	-	344	(344)	-100.00%	-	429	(429)	-100.00%
United Shuttle	306	1,436	(1,130)	-78.69%	297	1,299	(1,002)	-77.14%
United Express Subtotal	306	5,299	(4,993)	-94.23%	297	5,225	(4,928)	-94.32%
United Airlines Mainline	-	-	0	N/A	-	148	(148)	-100.00%
United Airlines Total	306	5,299	(4,993)	-94.23%	297	5,373	(5,076)	-94.47%
Charters	-	-	0	N/A	-	-	0	N/A

MONTHLY TOTALS	AUGUST ENPLANEMENT DATA				AUGUST DEPLANEMENT DATA			
	2020	2019	Difference	% Change	2020	2019	Difference	% Change
	12,344	44,784	(32,440)	-72.44%	12,772	45,740	(32,968)	-72.08%

TOTAL PASSENGERS FOR AUGUST 2020: 25,116
PERCENT CHANGE VERSUS AUGUST 2019: - 72.25%