

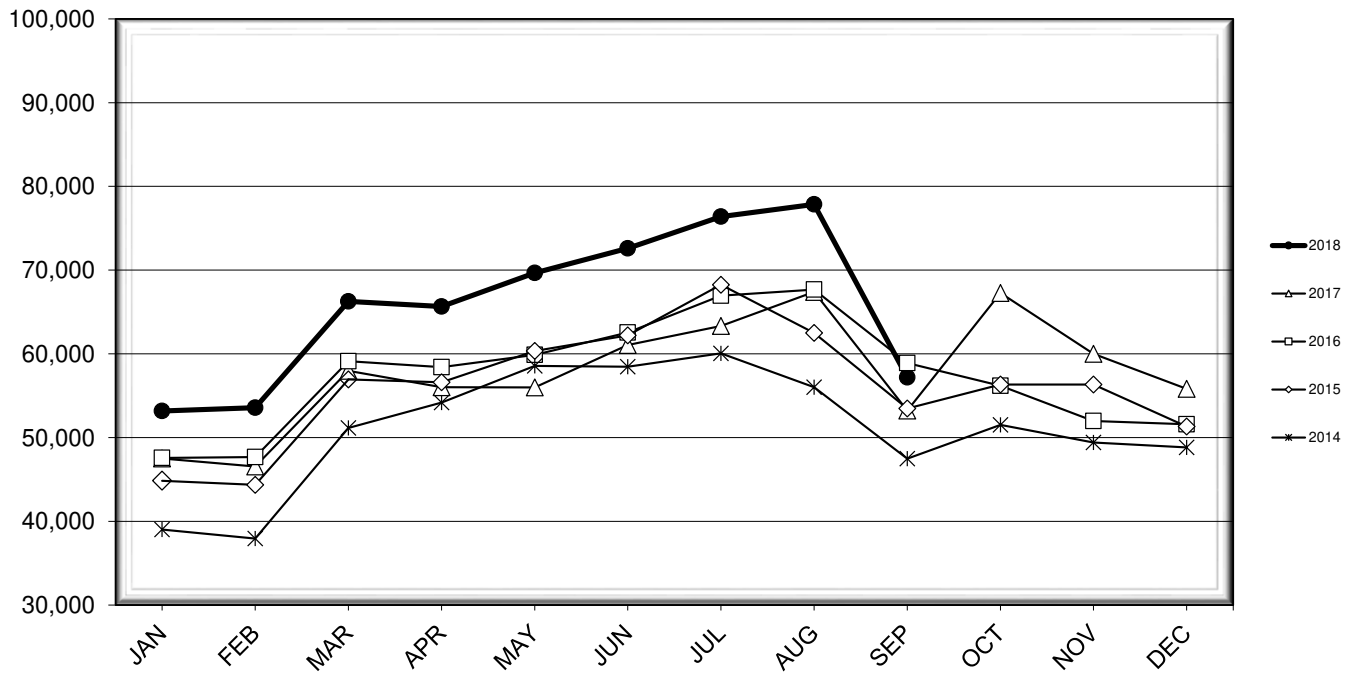


LEHIGH VALLEY INTERNATIONAL AIRPORT MONTHLY TRAFFIC REPORT SEPTEMBER 2018

TOTAL PASSENGER TRAFFIC COMPARISON

Month	2018	Percent Difference	2017	2016	2015	2014
January	53,177	11.92%	47,515	47,570	44,848	39,020
February	53,564	15.07%	46,549	47,675	44,358	37,943
March	66,267	14.30%	57,977	59,121	56,939	51,161
April	65,648	17.20%	56,012	58,420	56,606	54,173
May	69,675	24.43%	55,996	59,880	60,335	58,567
June	72,600	18.93%	61,044	62,542	62,200	58,471
July	76,394	20.62%	63,336	66,953	68,256	60,064
August	77,851	15.50%	67,402	67,673	62,497	56,021
September	57,195	7.45%	53,228	58,906	53,474	47,471
October			67,261	56,198	56,335	51,509
November			60,008	51,971	56,326	49,414
December			55,826	51,596	51,331	48,836

COMPARISON OF TOTAL PASSENGERS



**LEHIGH VALLEY INTERNATIONAL AIRPORT (ABE)
MONTHLY TRAFFIC REPORT
SEPTEMBER 2018**

SEPTEMBER

YEAR-TO-DATE

		2018	2017	Increase (Decrease)	Percent Difference	2018	2017	Increase (Decrease)	Percent Difference
MAJOR AIRLINES:									
Passengers									
Enplaned		2,845	2,315	530	22.89%	26,107	22,135	3,972	17.94%
Deplaned		2,494	1,930	564	29.22%	24,652	19,968	4,684	23.46%
Sub-total		5,339	4,245	1,094	25.77%	50,759	42,103	8,656	20.56%
REGIONAL AIRLINES:									
Passengers									
Enplaned		26,060	24,607	1,453	5.90%	272,174	233,813	38,361	16.41%
Deplaned		25,796	24,376	1,420	5.83%	269,438	233,143	36,295	15.57%
Sub-total		51,856	48,983	2,873	5.87%	541,612	466,956	74,656	15.99%
TOTAL PASSENGERS		57,195	53,228	3,967	7.45%	592,371	509,059	83,312	16.37%
CARGO:									
Enplaned		9,116,647	7,233,570	1,883,077	26.03%	78,177,453	73,382,195	4,795,258	6.53%
Deplaned		8,818,734	9,028,755	(210,021)	-2.33%	75,244,547	75,975,554	(731,007)	-0.96%
TOTAL CARGO		17,935,381	16,262,325	1,673,056	10.29%	153,422,000	149,357,749	4,064,251	2.72%
CUSTOMS: Entries									
		19	16	3	18.75%	137	133	4	3.01%

MONTHLY AIRCRAFT ACTIVITY

The FEDERAL AVIATION ADMINISTRATION
AIR TRAFFIC CONTROL TOWER at LVIA recorded
the following aircraft take-offs and landings for the month:

SEPTEMBER

YEAR-TO-DATE

		2018	2017	Increase (Decrease)	Percent Difference	2018	2017	Increase (Decrease)	Percent Difference
Major Airlines		852	824	28	3.40%	7,849	7,497	352	4.70%
Regional Airlines		711	806	(95)	-11.79%	6,523	7,075	(552)	-7.80%
General Aviation		1,962	2,602	(640)	-24.60%	18,907	19,122	(215)	-1.12%
Military		31	21	10	47.62%	446	419	27	6.44%
Total Itinerant		3,556	4,253	(697)	-16.39%	33,725	34,113	(388)	-1.14%
Total Local		1,721	2,986	(1,265)	-42.36%	21,917	26,175	(4,258)	-16.27%
TOTAL OPERATIONS		5,277	7,239	(1,962)	-27.10%	55,642	60,288	(4,646)	-7.71%

