

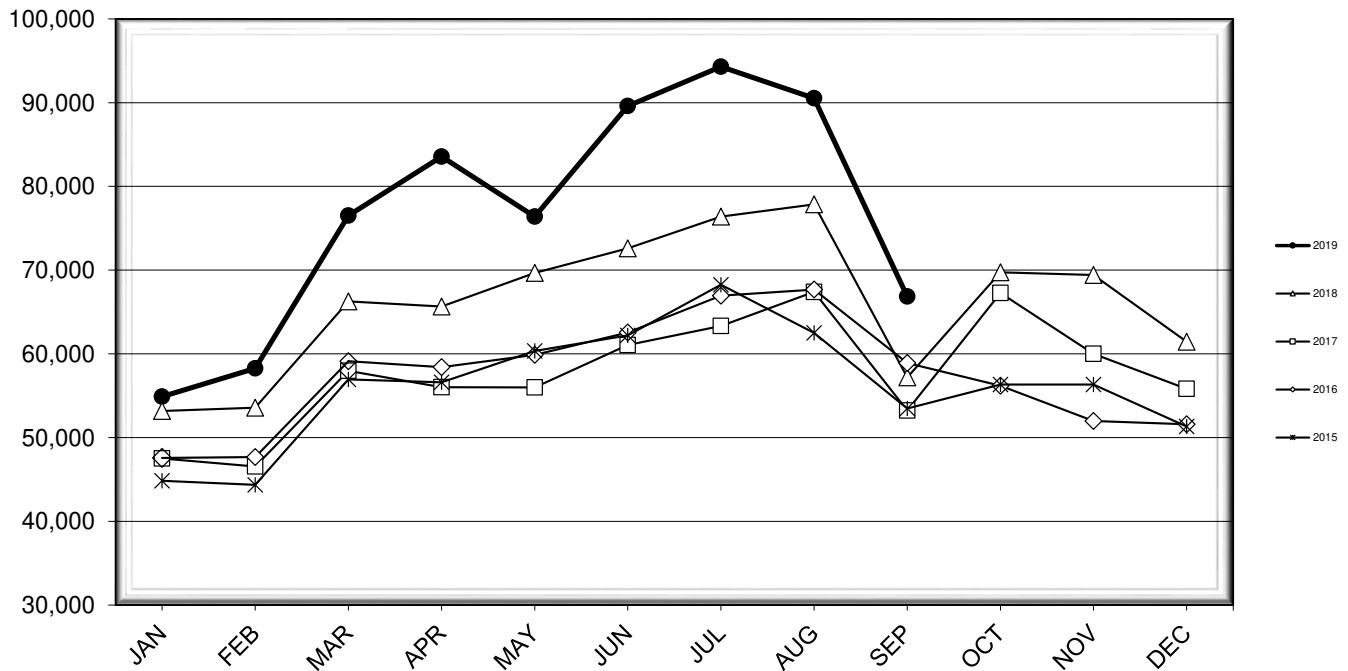


LEHIGH VALLEY INTERNATIONAL AIRPORT MONTHLY TRAFFIC REPORT SEPTEMBER 2019

TOTAL PASSENGER TRAFFIC COMPARISON

Month	2019	Percent Difference	2018	2017	2016	2015
January	54,895	3.23%	53,177	47,515	47,570	44,848
February	58,276	8.80%	53,564	46,549	47,675	44,358
March	76,512	15.46%	66,267	57,977	59,121	56,939
April	83,560	27.28%	65,648	56,012	58,420	56,606
May	76,400	9.65%	69,675	55,996	59,880	60,335
June	89,609	23.43%	72,600	61,044	62,542	62,200
July	94,298	23.44%	76,394	63,336	66,953	68,256
August	90,524	16.28%	77,851	67,402	67,673	62,497
September	66,854	16.89%	57,195	53,228	58,906	53,474
October			69,736	67,261	56,198	56,335
November			69,414	60,008	51,971	56,326
December			61,453	55,826	51,596	51,331

COMPARISON OF TOTAL PASSENGERS



**LEHIGH VALLEY INTERNATIONAL AIRPORT (ABE)
MONTHLY TRAFFIC REPORT
SEPTEMBER 2019**

	SEPTEMBER				YEAR-TO-DATE			
	2019	2018	Increase (Decrease)	Percent Difference	2019	2018	Increase (Decrease)	Percent Difference
MAJOR AIRLINES:								
Passengers								
Enplaned	2,365	2,845	(480)	-16.87%	23,276	26,107	(2,831)	-10.84%
Deplaned	2,204	2,494	(290)	-11.63%	22,113	24,652	(2,539)	-10.30%
Sub-total	4,569	5,339	(770)	-14.42%	45,389	50,759	(5,370)	-10.58%
REGIONAL AIRLINES:								
Passengers								
Enplaned	31,541	26,060	5,481	21.03%	323,760	272,174	51,586	18.95%
Deplaned	30,744	25,796	4,948	19.18%	321,779	269,438	52,341	19.43%
Sub-total	62,285	51,856	10,429	20.11%	645,539	541,612	103,927	19.19%
TOTAL PASSENGERS	66,854	57,195	9,659	16.89%	690,928	592,371	98,557	16.64%
CARGO:								
Enplaned	8,000,789	9,116,647	(1,115,858)	-12.24%	71,140,184	78,177,453	(7,037,269)	-9.00%
Deplaned	8,465,757	8,818,734	(352,977)	-4.00%	60,360,705	75,244,547	(14,883,842)	-19.78%
TOTAL CARGO	16,466,546	17,935,381	(1,468,835)	-8.19%	131,500,889	153,422,000	(21,921,111)	-14.29%
CUSTOMS: Entries	19	19	0	0.00%	128	137	(9)	-6.57%

MONTHLY AIRCRAFT ACTIVITY

The FEDERAL AVIATION ADMINISTRATION
AIR TRAFFIC CONTROL TOWER at LVIA recorded
the following aircraft take-offs and landings for the month:

	SEPTEMBER				YEAR-TO-DATE			
	2019	2018	Increase (Decrease)	Percent Difference	2019	2018	Increase (Decrease)	Percent Difference
Major Airlines	990	852	138	16.20%	8,417	7,849	568	7.24%
Regional Airlines	880	711	169	23.77%	7,391	6,523	868	13.31%
General Aviation	2,933	1,962	971	49.49%	21,679	18,907	2,772	14.66%
Military	30	31	(1)	-3.23%	370	446	(76)	-17.04%
Total Itinerant	4,833	3,556	1,277	35.91%	37,857	33,725	4,132	12.25%
Total Local	4,235	1,721	2,514	146.08%	28,373	21,917	6,456	29.46%
TOTAL OPERATIONS	9,068	5,277	3,791	71.84%	66,230	55,642	10,588	19.03%

