

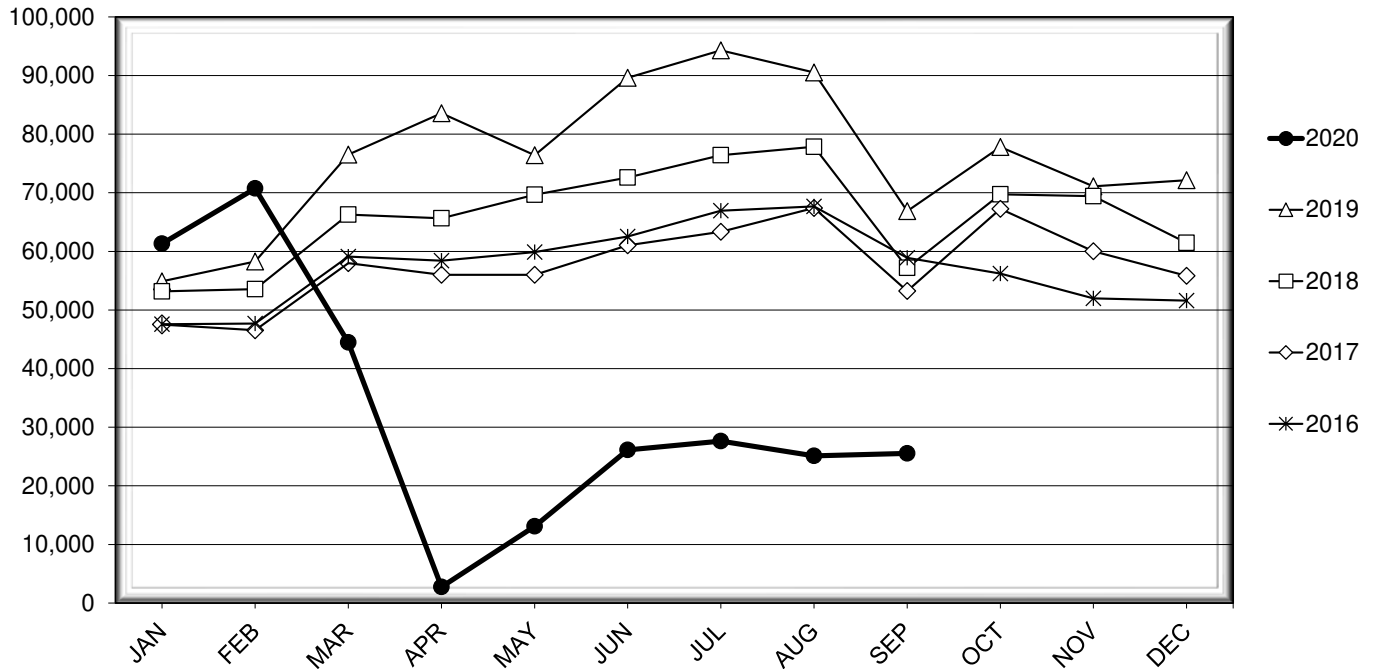


# LEHIGH VALLEY INTERNATIONAL AIRPORT MONTHLY TRAFFIC REPORT SEPTEMBER 2020

## TOTAL PASSENGER TRAFFIC COMPARISON

Month	2020	Percent Difference	2019	2018	2017	2016
January	61,309	11.68%	54,895	53,177	47,515	47,570
February	70,732	21.37%	58,276	53,564	46,549	47,675
March **	44,478	-41.87%	76,512	66,267	57,977	59,121
April	2,749	-96.71%	83,560	65,648	56,012	58,420
May	13,107	-82.84%	76,400	69,675	55,996	59,880
June	26,123	-70.85%	89,609	72,600	61,044	62,542
July	27,612	-70.72%	94,298	76,394	63,336	66,953
August	25,116	-72.25%	90,524	77,851	67,402	67,673
September	25,545	-61.79%	66,854	57,195	53,228	58,906
October			77,794	69,736	67,261	56,198
November			71,098	69,414	60,008	51,971
December			72,150	61,453	55,826	51,596

## COMPARISON OF TOTAL PASSENGERS



\*\* COVID-19 PANDEMIC

**LEHIGH VALLEY INTERNATIONAL AIRPORT (ABE)  
MONTHLY TRAFFIC REPORT  
SEPTEMBER 2020**

**SEPTEMBER**

**YEAR-TO-DATE**

		2020	2019	Increase (Decrease)	Percent Difference	2020	2019	Increase (Decrease)	Percent Difference
<b>MAJOR AIRLINES:</b>									
Passengers									
Enplaned		0	2,365	(2,365)	-100.00%	5,713	23,276	(17,563)	-75.46%
Deplaned		0	2,204	(2,204)	-100.00%	5,781	22,113	(16,332)	-73.86%
Sub-total		0	4,569	(4,569)	-100.00%	11,494	45,389	(33,895)	-74.68%
<b>REGIONAL AIRLINES:</b>									
Passengers									
Enplaned		12,755	31,541	(18,786)	-59.56%	142,580	323,760	(181,180)	-55.96%
Deplaned		12,790	30,744	(17,954)	-58.40%	142,697	321,779	(179,082)	-55.65%
Sub-total		25,545	62,285	(36,740)	-58.99%	285,277	645,539	(360,262)	-55.81%
<b>TOTAL PASSENGERS</b>		<b>25,545</b>	<b>66,854</b>	<b>(41,309)</b>	<b>-61.79%</b>	<b>296,771</b>	<b>690,928</b>	<b>(394,157)</b>	<b>-57.05%</b>
<b>CARGO:</b>									
Enplaned		7,759,830	8,000,789	(240,959)	-3.01%	74,824,024	71,140,184	3,683,840	5.18%
Deplaned		8,188,042	8,465,757	(277,715)	-3.28%	81,821,261	60,360,705	21,460,556	35.55%
<b>TOTAL CARGO</b>		<b>15,947,872</b>	<b>16,466,546</b>	<b>(518,674)</b>	<b>-3.15%</b>	<b>156,645,285</b>	<b>131,500,889</b>	<b>25,144,396</b>	<b>19.12%</b>
<b>CUSTOMS: Entries</b>									
		7	19	(12)	-63.16%	41	128	(87)	-67.97%

**MONTHLY AIRCRAFT ACTIVITY**

The FEDERAL AVIATION ADMINISTRATION  
AIR TRAFFIC CONTROL TOWER at LVIA recorded  
the following aircraft take-offs and landings for the month:

**SEPTEMBER**

**YEAR-TO-DATE**

		2020	2019	Increase (Decrease)	Percent Difference	2020	2019	Increase (Decrease)	Percent Difference
Major Airlines		546	990	(444)	-44.85%	6,549	8,417	(1,868)	-22.19%
Regional Airlines		480	880	(400)	-45.45%	4,155	7,391	(3,236)	-43.78%
General Aviation		2,974	2,933	41	1.40%	19,582	21,679	(2,097)	-9.67%
Military		30	30	0	0.00%	299	370	(71)	-19.19%
Total Itinerant		4,030	4,833	(803)	-16.61%	30,585	37,857	(7,272)	-19.21%
Total Local		2,187	4,235	(2,048)	-48.36%	18,024	28,373	(10,349)	-36.47%
<b>TOTAL OPERATIONS</b>		<b>6,217</b>	<b>9,068</b>	<b>(2,851)</b>	<b>-31.44%</b>	<b>48,609</b>	<b>66,230</b>	<b>(17,621)</b>	<b>-26.61%</b>

