



# EXECUTIVE SUMMARY

## AIRPORT MASTER PLAN UPDATE LEHIGH VALLEY INTERNATIONAL AIRPORT

2019



**LNAA Strategic Plan** | The Lehigh-Northampton Airport Authority (LNAA) strategic plan was utilized as the framework to guide the overall analysis and decision making of this Master Plan.

**Vision and Goal Setting** | This Master Plan incorporated a wide range of stakeholder involvement to define the goals that were used to create an overall vision for the future of ABE. Three key study areas were identified to analyze the Airport's position in serving the connected metropolitan areas of the northeast region.

### Regional Context

**1** | Plan and develop the airport as a complex, multi-dimensional facility to ensure continued successful delivery of services.

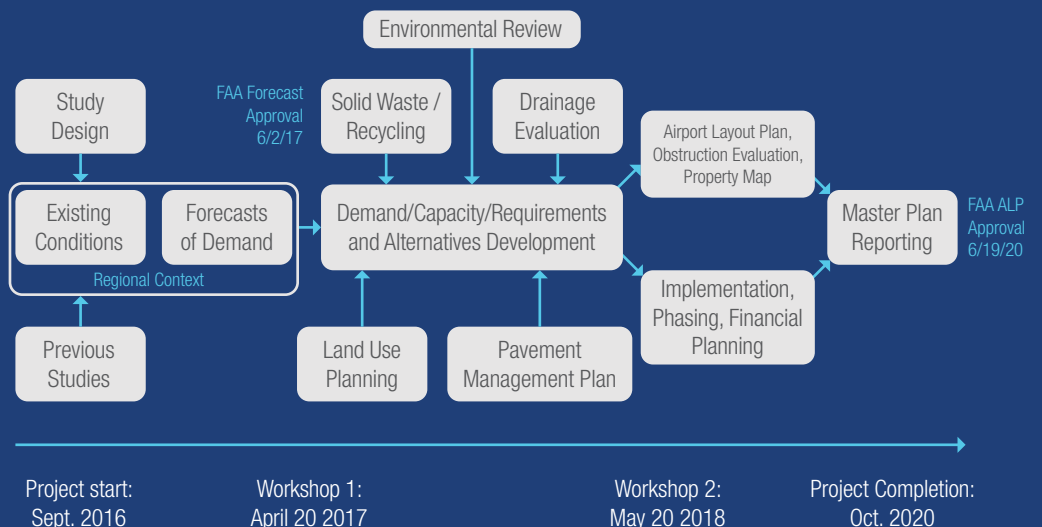
**2** | Examine the connectivity of ABE to the passenger and freight markets in the metropolitan area and its context in the northeast region.

**3** | Determine ABE's role in the region's social and economic development, including achieving its maximum economic impact on the region's development.

### Airport Master Plan Update

Major changes in the aviation industry and the region have occurred since the Master Plan was last updated in 2004. These updates need to be considered when evaluating ABE's future requirements and proposed development. The Master Plan provides a flexible 25-year development plan and program that maintains a safe, efficient, financially sound, and sustainable airport facility for the LNAA. The final preferred development plan is then utilized as a tool to prioritize and phase development to accommodate ABE's current and future needs.

### Master Plan Process





## Master Plan Report & Special Studies

The Master Plan report contains eight (8) sections to sequentially detail the overall process and analysis that ultimately led to the foundation of the Preferred Development Plan. Along with the report sections, other special studies were included in the document to provide a more in-depth analysis on key metric areas. A land use analysis included potential non-aeronautical development adjacent to the terminal, a regional context evaluated the shifting regional dynamics of the Lehigh Valley, and an environmental inventory and sustainability initiatives were also analyzed.

## 2004 vs. 2019... What's Changed?

While the Master Plan Update builds upon the proposed improvements previously identified in 2004, three (3) main findings emerged in the 2019 Master Plan report:

1. An immediate need exists to construct a Terminal Connector that allows the expansion of the TSA Security Checkpoint due to the increases in passenger traffic demand
2. There is a lack of adequate air cargo facilities to accommodate the existing demand and rapid growth of e-commerce and logistics occurring in the Lehigh Valley
3. Additional non-aeronautical development opportunities were identified in the terminal area that would be compatible with local zoning and regional needs

## Implementation and Financials

In coordination with the strategic goals of the LNAA and the preferred development concept, the outline below depicts the estimated costs for a phased approach for future development.

0 to 5 years (2018 to 2023).....	\$253 million
6 to 10 years (2024 to 2028).....	\$173 million
11 to 22 years (2029 to 2040).....	\$153 million
23 years and beyond ( 2041+).....	(not estimated)

Based on actual activity at the Airport, the LNAA can accelerate or defer the implementation of specific projects identified in this Master Plan. The Airport evaluates its capital plan on an annual basis to make necessary adjustments due to changes in demand or priority.

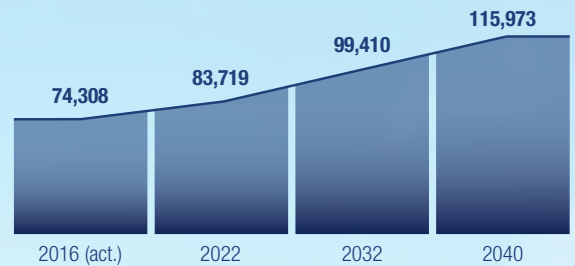
# APPROVED FORECASTS OF AVIATION DEMAND

ABE Passenger Activity averaged 8% growth over the last 5 years, and 15% growth between 2018-2019; exceeding the approved 2017 master plan forecasts. Despite fluctuations in the market, the forecast is adaptable to account for future changes in demand to ensure flexible prioritization of airport development.

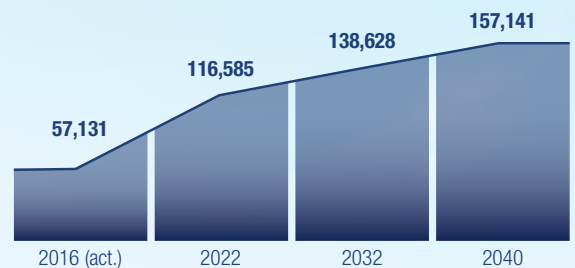
## Airline Enplanements (Departing Passengers)



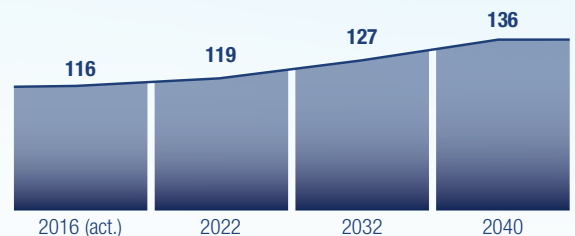
## Total Operations (Takeoffs & Landings)



## Air Cargo (Metric Tons)

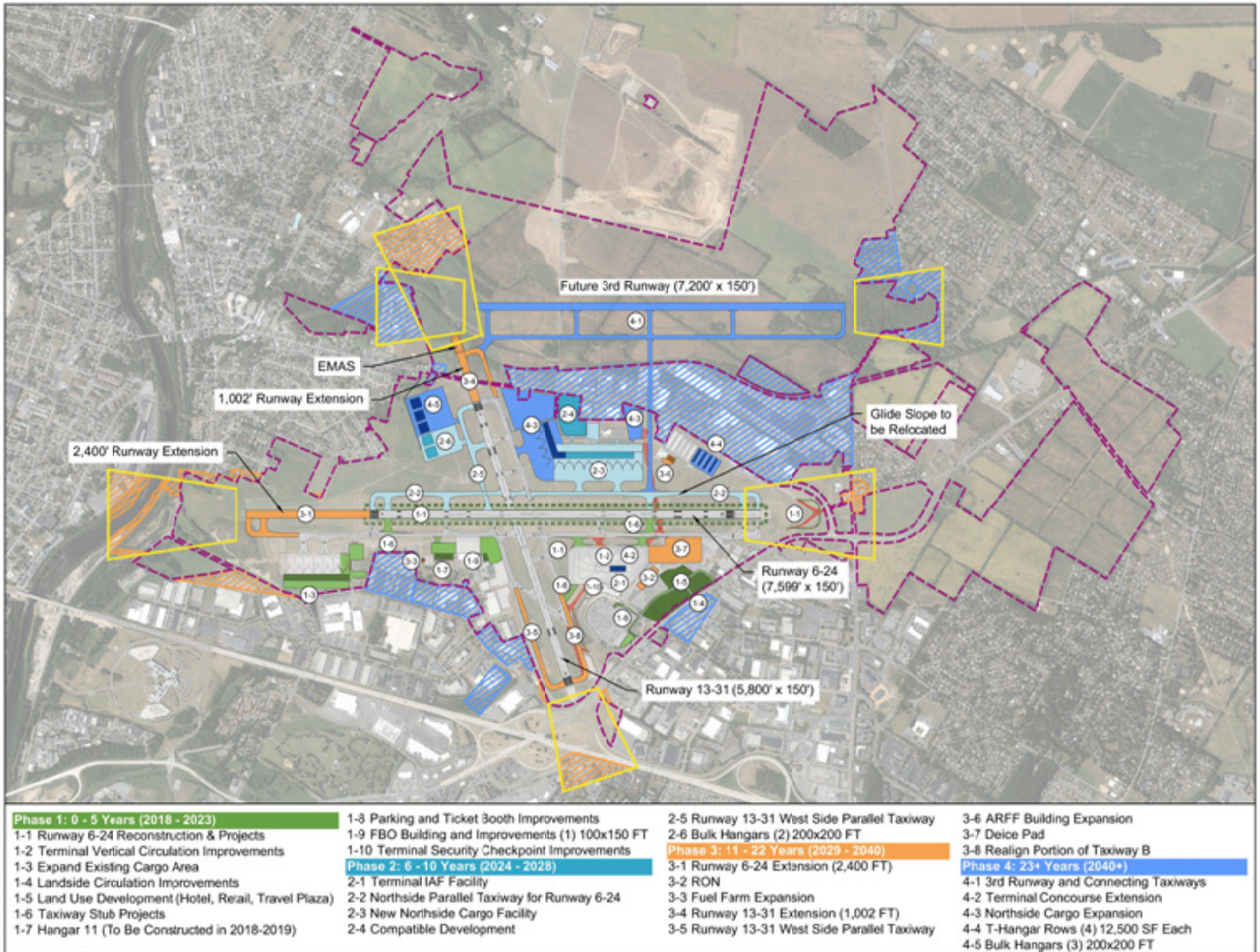


## Based Aircraft (General Aviation & Corporate Tenants)





# PREFERRED DEVELOPMENT PLAN



## Preferred Development Plan

The Master Plan gathered information about existing conditions at ABE and documented the Airport's local, regional, and national context. The Capital Plan established facility requirements to understand ABE's ability to accommodate future aviation demand, and developed and evaluated alternatives to meet identified needs. Additional special studies informed the Master Plan on drainage, pavement management, land use, regional context, environmental inventory, sustainability initiatives, solid waste and recycling.



## Public Involvement Plan

The LNAA recognizes the importance of public participation in the development of a master plan and therefore strived to reach a broader consensus for its development recommendations in the greater community through ongoing engagement. For this Master Plan, public participation came from Project Advisory Group (PAG) meetings, LNAA Board of Governors briefings, a regional context workshop, and public information meetings throughout the process.

Two open-house style public information meetings/workshops were held on April 20, 2017, and May 10, 2018 which provided the community an opportunity to review and comment on the Master Plan data and the phased approach for proposed development. The meetings also included an overview of the regional context, existing conditions inventory, and forecasts of aviation demand.



Master Plan update prepared by:



In association with



MICHAEL GALLIS & ASSOCIATES



### LNAA Contact Information:

Lehigh-Northampton Airport Authority  
3311 Airport Road  
Allentown, PA 18109  
1-800-FLY-LVIA  
flyabe.com

### Additional Information

The complete Master Plan document can be found at:

[WWW.FLYABE.COM/MASTERPLAN](http://WWW.FLYABE.COM/MASTERPLAN)

